



**FIXED PRICE
HOUSE
& LAND
PACKAGES**

**\$1000
DEPOSIT**
Secure your
package
today

ROCHESTER 192 4 2 1 **\$726,745**

**Lot 33, 17th Avenue
Austral, NSW 2179**

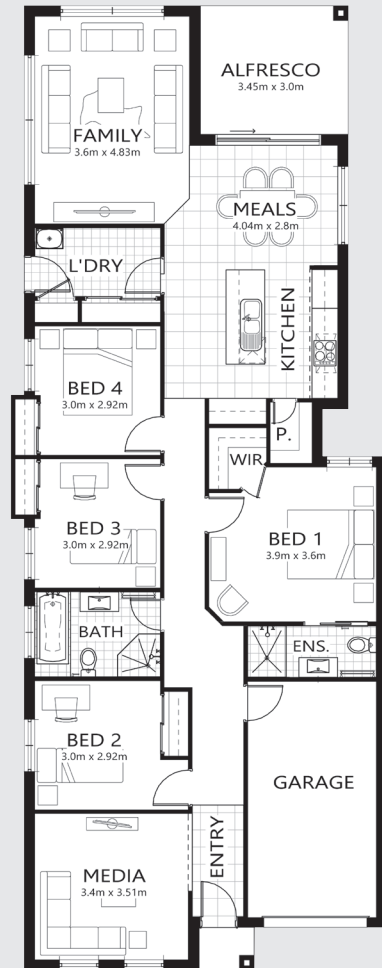
**Total under-roof area¹ 192m²
Block size 301m²**

Bellriver packages all feature:

- Glazed external entry door
- Reverse cycle air-conditioning
- Satin chrome lever door handles
- Carpet & tiles throughout
- Basswood timber blinds
- Stone kitchen benchtops
- S.S. dishwasher & microwave
- 900mm S.S. canopy rangehood
- Hettich soft close mechanisms
- Wall-hung bathroom vanities
- Keyed alike window locks
- Timber architrave & skirting
- Fitted fly screens
- Border tiles to bathroom & ensuite showers ...

This package also includes:

- All site costs & connections
- H1 Slab with retaining as required
- Coloured concrete driveway & path
- Brick mailbox & Colorbond® fence
- Landscaping & turf to front



¹Includes garage, alfresco, porch & eaves. *Images are for illustrative purposes only and may include options not included in price. Please talk to a Bellriver consultant for a full list of inclusions. Package price is based on June 2017 pricelist. Bellriver Homes reserves the right to change specifications & prices without notice.