

# HOUSE & LAND PACKAGES

**\$1000 DEPOSIT**

Secure your package today



## SOMERTON 364

4 2 2

**\$697,900**

Lot 11-13, Killara Road  
Cowra, NSW 2794

Total under-roof area<sup>1</sup> 364m<sup>2</sup>

Block size 4000m<sup>2</sup>

### Bellriver packages all feature:

- Glazed external entry door
- Reverse cycle air-conditioning
- Satin chrome lever door handles
- Carpet & tiles throughout
- Basswood timber blinds
- Stone kitchen benchtops
- S.S. dishwasher & microwave
- 900mm S.S. canopy rangehood
- Hettich soft close mechanisms
- Wall-hung bathroom vanities
- Keyed alike window locks
- Timber architrave & skirting
- Fitted fly screens
- Border tiles to bathroom & ensuite showers ...

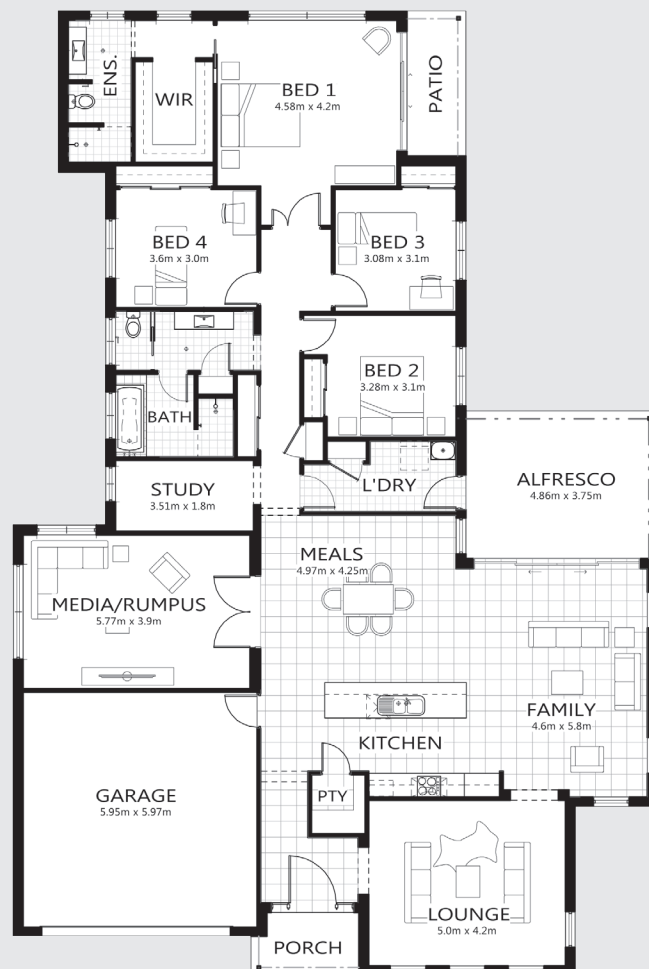
### This package also includes:

- Plantation Shutters to front only
- HAG 11 internal Doors
- Dual Instant HWS
- 110,00ltr water tank
- Rotary Clothesline
- 11x4m concrete pad to front of garages
- Site works
- 3 car garage & workshop

### Contact:

Grant Mansell | 0437 720 423

Mathew Wright | 0428 087 303



[bellriverhomes.com.au](http://bellriverhomes.com.au)



**BELLRIVER**