

**FIXED PRICE  
HOUSE  
& LAND  
PACKAGES**

**\$1000  
DEPOSIT**  
Secure your  
package  
today



# KIAMA 280

6 3 2

**\$949,950**

**Lot 1426, Willowdale  
Denham Court, NSW 2565**

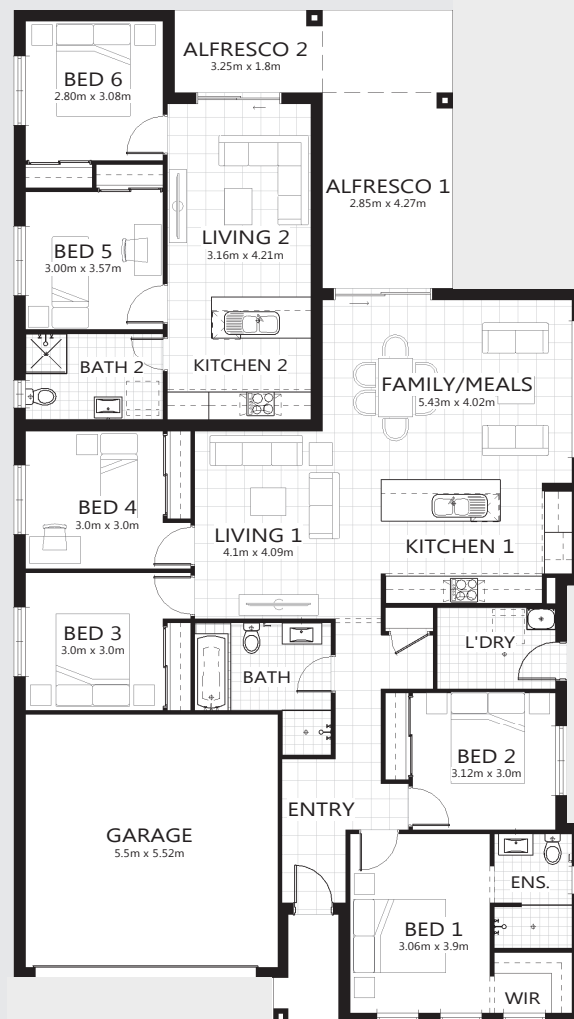
**Total under-roof area<sup>1</sup> 279.77m<sup>2</sup>  
Block size 450m<sup>2</sup>**

**Bellriver packages all feature:**

- Glazed external entry door
- Reverse cycle air-conditioning
- Satin chrome lever door handles
- Carpet & tiles throughout
- Basswood timber blinds
- Stone kitchen benchtops
- S.S. dishwasher & microwave
- 900mm S.S. canopy rangehood
- Hettich soft close mechanisms
- Wall-hung bathroom vanities
- Keyed alike window locks
- Timber architrave & skirting
- Fitted fly screens
- Border tiles to bathroom & ensuite showers

**Also includes:**

- All site costs & connections
- Concrete Driveway
- BRH standard ceramic tiling to Alfresco and Porch
- Kikuyu Turf
- Landscaping - 12m of bricked edging to create garden bed (maximum 5m<sup>2</sup>) including 20 x native shrubs/plants, 2 x native trees. Includes Landscape plan
- 1800mm high Colorbond Fencing
- Brick mailbox (From BRH face brick to match home)
- Clothesline and concrete path (Up to 10m<sup>2</sup> for path)



[bellriverhomes.com.au](http://bellriverhomes.com.au)



<sup>1</sup>Includes garage, alfresco, porch & eaves. \*Images are for illustrative purposes only and may include options not included in price. Please talk to a Bellriver consultant for a full list of inclusions. Package price is based on June 2017 pricelist. Bellriver Homes reserves the right to change specifications & prices without notice. INK 2683-17.