

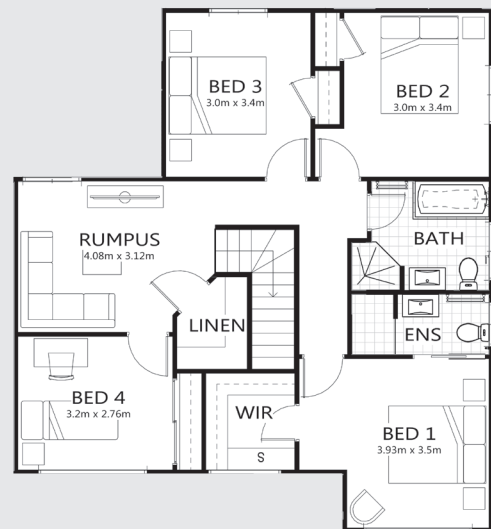
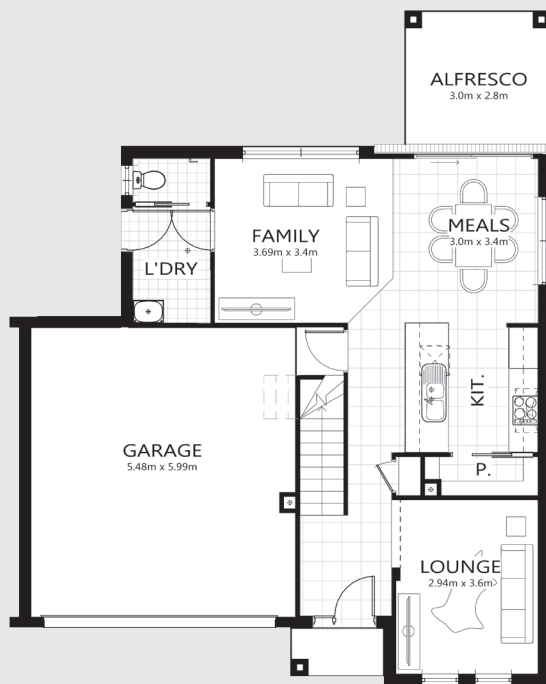
# HOUSE & LAND PACKAGES

**\$1000 DEPOSIT**  
Secure your package today



## ASCOT 229

4 2.5 2 **\$421,635**



**Lot 44**  
**Parkes, NSW 2870**

**Total under-roof area<sup>†</sup> 229m<sup>2</sup>**  
**Block size 773.5m<sup>2</sup>**

**Bellriver packages all feature:**

- Glazed external entry door
- Reverse cycle air-conditioning
- Satin chrome lever door handles
- Carpet & tiles throughout
- Basswood timber blinds
- Stone kitchen benchtops
- S.S. dishwasher & microwave
- 900mm S.S. canopy rangehood
- Hettich soft close mechanisms
- Wall-hung bathroom vanities

- Keyed alike window locks
- Timber architrave & skirting
- Fitted fly screens
- Border tiles to bathroom & ensuite showers ...

**This package also includes:**

- All site costs & connections
- Coloured concrete driveway
- Brick letter box & bin pad
- Site works for M class
- Clothesline & Path

[bellriverhomes.com.au](http://bellriverhomes.com.au)



<sup>†</sup>Includes garage, alfresco, porch & eaves. \*Images are for illustrative purposes only and may include options not included in price. Please talk to a Bellriver consultant for a full list of inclusions. Package price is based on June 2017 pricelist. Bellriver Homes reserves the right to change specifications & prices without notice.