

HOUSE & LAND PACKAGES

\$1000 DEPOSIT
Secure your package today

\$20,000 SPENDING SPREE FREE
FOR \$1990



ROCHESTER 17

4 2 1

\$739,800

THE URBAN PROJECT
AFFORDABLE HOMES

**Lot 1452, Pimlico Street
Hills of Carmel Estate
Box Hill, NSW 2756**

**House size¹ 161.8m²
House price \$274,900**

**Land size 300.0m²
Land price \$464,900**

Bellriver Urban packages feature:

- Urban Series specifications & inclusions
- Basix report inclusive of rainwater tank
- Site costs & service connections
- Quality laminate flooring throughout
- Quality carpet to balance
- Westinghouse S/S appliances
- Westinghouse S/S 900mm rangehood
- Triple coated paint system
- 90mm wall frames
- Plain concrete to porch

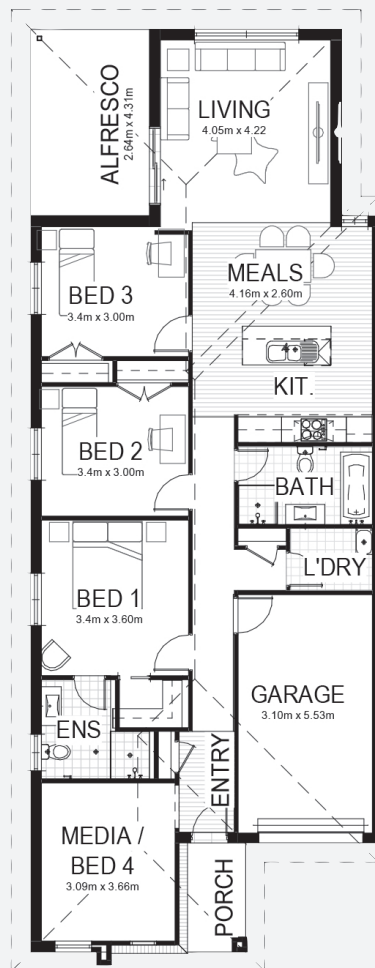
This package also includes:

- Estella façade
- Concrete driveway & path

OUR '20K SPENDING SPREE FOR \$1990' OFFER CAN INCLUDE LUXURY PACKAGE UPGRADES SUCH AS:

- Ducted air-conditioning
- Stone kitchen benchtops
- Higher ceilings
- Recessed downlights

Speak to a consultant today for details.

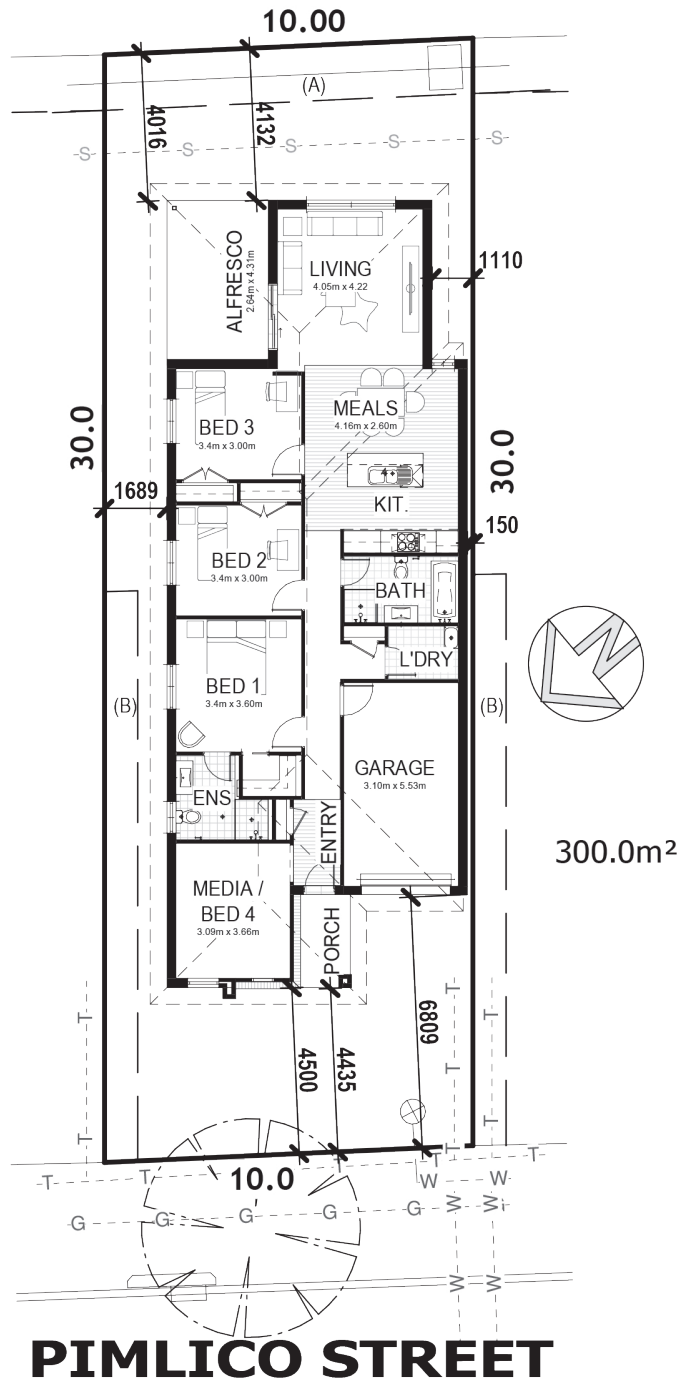


bellriverhomes.com.au



¹Includes garage, alfresco & porch where included. *Images are for illustrative purposes only and may include options not included in price. Please talk to a Bellriver consultant for a full list of inclusions. Package price is based on July 2020 pricelist. Bellriver Homes reserves the right to change specifications & prices without notice.

PROPOSED SITING OF YOUR NEW BELLRIVER HOME



SIMPLIFIED CDC

Note: This is a preliminary siting and is subject to a clear copy of title and approval of the builder.

This siting is subject to developer approval, rescod (state building regulations) and council requirements (if required).

Land siting acceptance:

Sign 1:

Sign 2:

Date:

bellriverhomes.com.au

