

# HOUSE & LAND PACKAGES

**\$1000 DEPOSIT**  
Secure your package today

**\$20,000 SPENDING SPREE**  
FOR \$1990



## AVALON 23

4 2 2

**\$784,545**

**THE URBAN PROJECT**  
AFFORDABLE HOMES

**Lot 1453, Pimlico Street  
Hills of Carmel Estate  
Box Hill, NSW 2756**

**House size<sup>1</sup> 214.0m<sup>2</sup>  
House price \$319,645**

**Land size 300.0m<sup>2</sup>  
Land price \$464,900**

### Bellriver Urban packages feature:

- Urban Series specifications & inclusions
- Basix report inclusive of rainwater tank
- Site costs & service connections
- Quality laminate flooring throughout
- Quality carpet to balance
- Westinghouse S/S appliances
- Westinghouse S/S 900mm rangehood
- Triple coated paint system
- 90mm wall frames
- Plain concrete to porch & alfresco

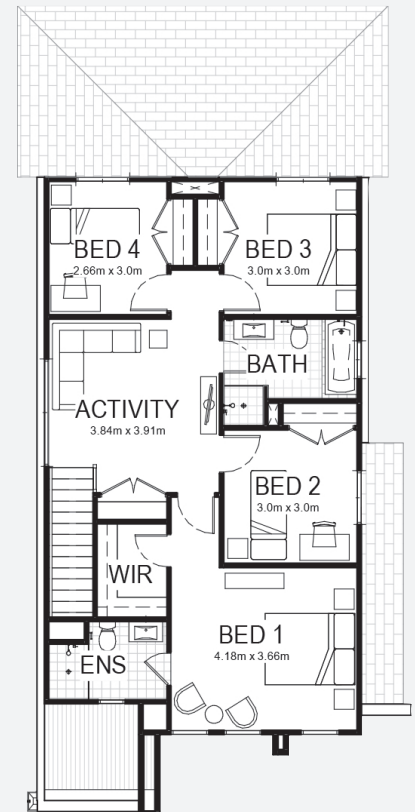
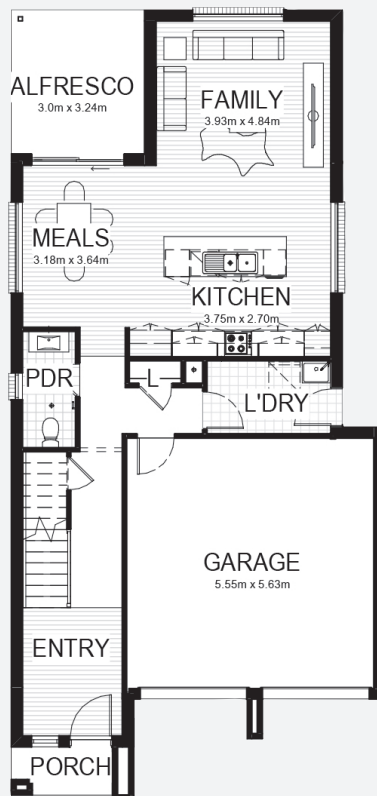
### This package also includes:

- Belfort façade
- Concrete driveway & path

### OUR '20K SPENDING SPREE FOR \$1990' OFFER CAN INCLUDE LUXURY PACKAGE UPGRADES SUCH AS:

- Ducted air-conditioning
- Stone kitchen benchtops
- Higher ceilings
- Recessed downlights

**Speak to a consultant today for details.**



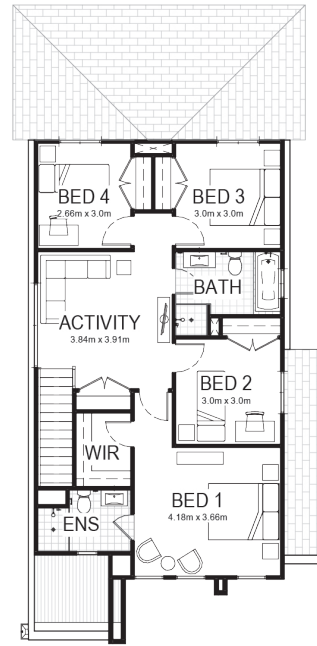
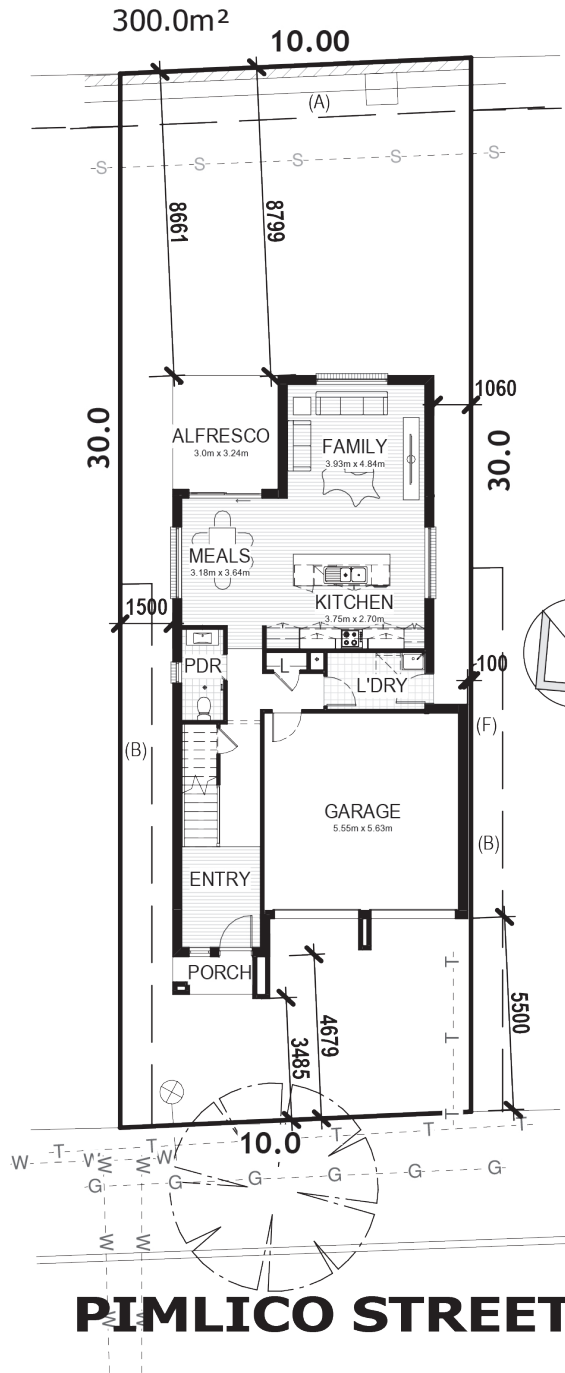
[bellriverhomes.com.au](http://bellriverhomes.com.au)



\*Includes garage, alfresco & porch. \*Images are for illustrative purposes only and may include options not included in price. Please talk to a Bellriver consultant for a full list of inclusions. Package price is based on January 2020 pricelist. Bellriver Homes reserves the right to change specifications & prices without notice.

# PROPOSED SITING OF YOUR NEW BELLRIVER HOME

## LOT 1453



### SIMPLIFIED CDC

**Note:** This is a preliminary siting and is subject to a clear copy of title and approval of the builder.

This siting is subject to developer approval, rescode (state building regulations) and council requirements (if required).

### Land siting acceptance:

Sign 1:

Sign 2:

Date:

[bellriverhomes.com.au](http://bellriverhomes.com.au)

