

# HOUSE & LAND PACKAGES

**\$1000 DEPOSIT**  
Secure your package today



## ROCHESTER 16

4 2 1

# \$727,000

**THE URBAN PROJECT**  
AFFORDABLE HOMES

**Lot 1453, Pimlico St  
Hills of Carmel  
Box Hill, NSW 2765**

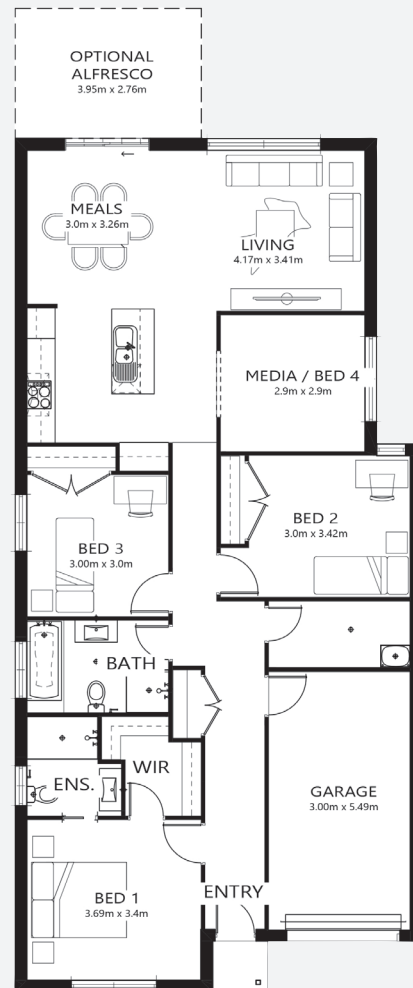
**Total area<sup>†</sup> 146.5m<sup>2</sup>  
Block size 300.3m<sup>2</sup>**

### Bellriver Urban packages feature:

- Urban Series specifications & inclusions
- Basix report inclusive of rainwater tank
- Site costs & service connections
- Quality laminate flooring throughout
- Quality carpet to bedrooms
- Westinghouse S/S appliances
- Westinghouse S/S 900mm rangehood
- Triple coated paint system
- 90mm wall frames

### This package also includes:

- Sienna façade
- Concrete driveway & path

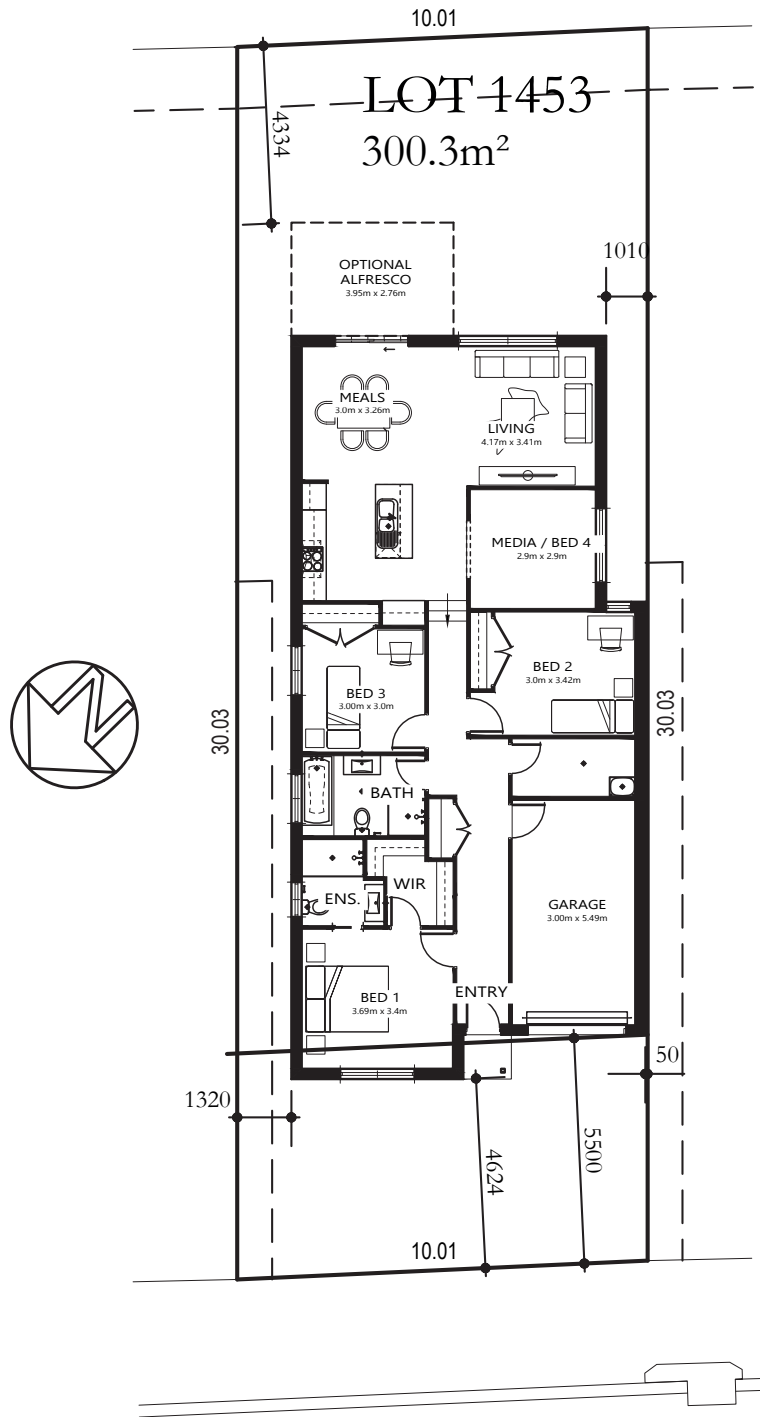


[bellriverhomes.com.au](http://bellriverhomes.com.au)



\*Includes garage, alfresco & porch. \*Images are for illustrative purposes only and may include options not included in price. Please talk to a Bellriver consultant for a full list of inclusions. Package price is based on November 2018 pricelist. Price is subject to soil test and contour survey. Bellriver Homes reserves the right to change specifications & prices without notice.

# PROPOSED SITING OF YOUR NEW BELLRIVER HOME



PIMLICO STREET

## Land siting acceptance:

Sign 1:

Sign 2:

Date:

[bellriverhomes.com.au](http://bellriverhomes.com.au)

