

# HOUSE & LAND PACKAGES

**\$1000 DEPOSIT**  
Secure your package today

**\$20,000 SPENDING SPREE**  
FOR \$1990



## SOMERTON 24 MK1

4 | 2 | 2

**\$518,990**

**THE URBAN PROJECT**  
AFFORDABLE HOMES

**Lot 2009, Brooker Drive  
Katherine's Landing  
Huntlee, NSW 2355**

**House size<sup>†</sup> 222.4m<sup>2</sup>  
House price \$340,990**

**Land size 527.0m<sup>2</sup>  
Land price \$178,000**

### Bellriver Urban packages feature:

- Urban Series specifications & inclusions
- Basix report inclusive of rainwater tank
- Site costs & service connections
- Quality laminate flooring throughout
- Quality carpet to balance
- Westinghouse S/S appliances
- Westinghouse S/S 900mm rangehood
- Triple coated paint system
- 90mm wall frames
- Plain concrete to porch & alfresco

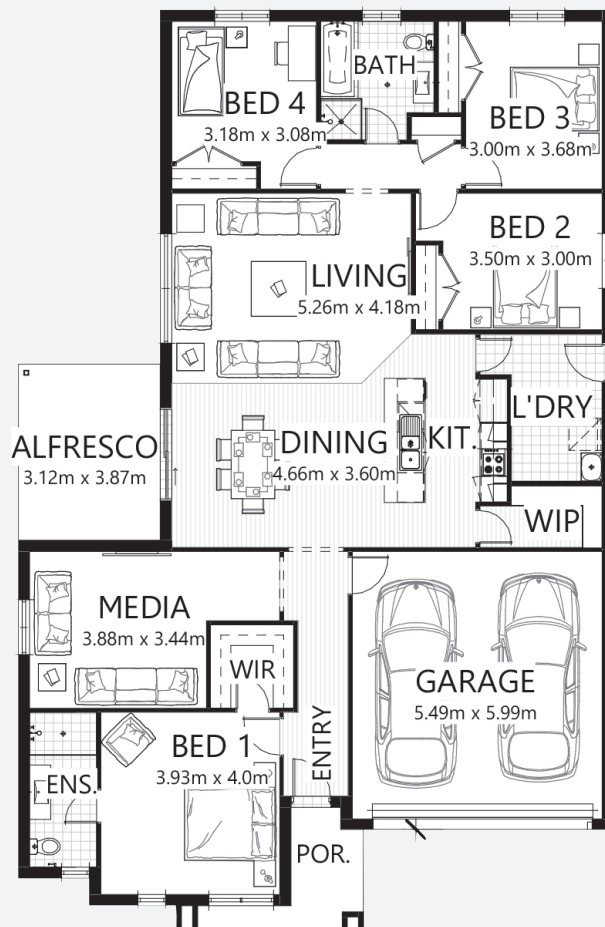
### This package also includes:

- Milan façade
- Concrete driveway & path

### OUR '20K SPENDING SPREE FOR \$1990' OFFER CAN INCLUDE LUXURY PACKAGE UPGRADES SUCH AS:

- Ducted air-conditioning
- Stone kitchen benchtops
- Higher ceilings
- Recessed downlights

**Speak to a consultant today for details.**

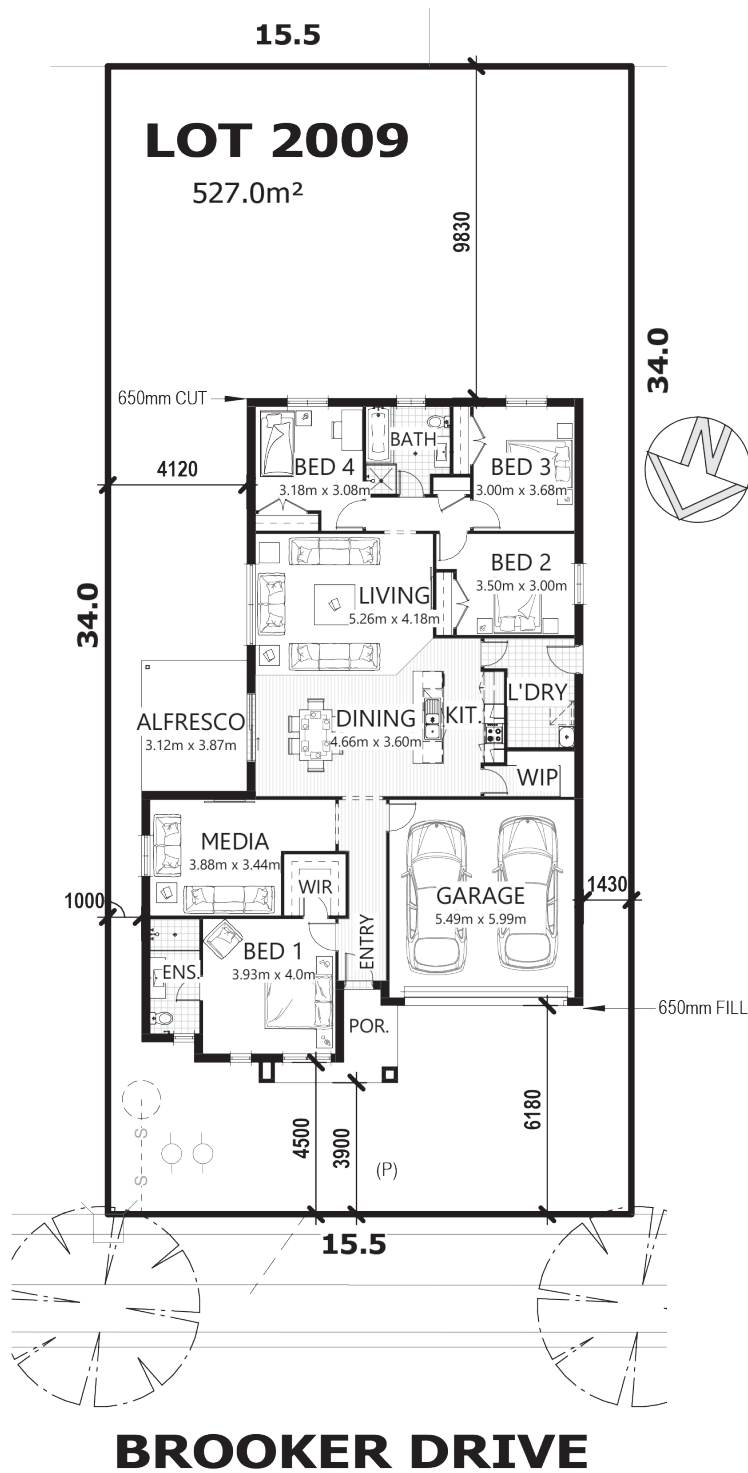


[bellriverhomes.com.au](http://bellriverhomes.com.au)



\*Includes garage, alfresco & porch. \*Images are for illustrative purposes only and may include options not included in price. Please talk to a Bellriver consultant for a full list of inclusions. Package price is based on January 2020 pricelist. Bellriver Homes reserves the right to change specifications & prices without notice.

# PROPOSED SITING OF YOUR NEW BELLRIVER HOME



## SIMPLIFIED CDC

**Note:** This is a preliminary siting and is subject to a clear copy of title and approval of the builder.

This siting is subject to developer approval, rescode (state building regulations) and council requirements (if required).

## Land siting acceptance:

Sign 1:

Sign 2:

Date:

[bellriverhomes.com.au](http://bellriverhomes.com.au)

