

HOUSE & LAND PACKAGES

\$1000 DEPOSIT
Secure your package today

\$20,000 SPENDING SPREE
FOR \$1990



OAKDALE 24 MOD

4 3 2

\$984,945

THE URBAN PROJECT
AFFORDABLE HOMES

**Lot 5055, Harbour Blvd.
The Waterfront
Shell Cove, NSW 2529**

House size¹ 256.8m²
House price \$364,945

Land size 432.7m²
Land price \$620,000

Bellriver Urban packages feature:

- Urban Series specifications & inclusions
- Basix report inclusive of rainwater tank
- Site costs & service connections
- Quality laminate flooring throughout
- Quality carpet to balance
- Westinghouse S/S appliances
- Westinghouse S/S 900mm rangehood
- Triple coated paint system
- 90mm wall frames
- Plain concrete to porch & alfresco

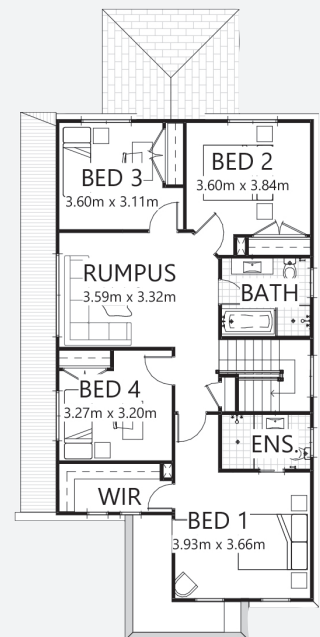
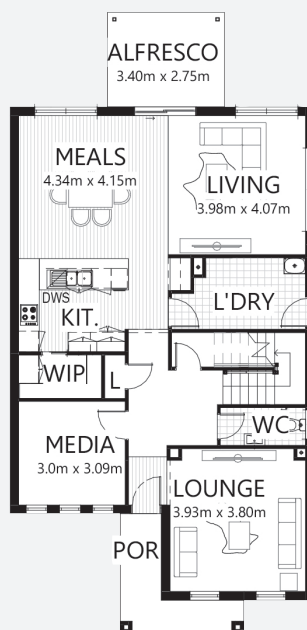
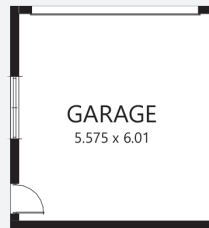
This package also includes:

- Trinity façade
- Concrete driveway & path

OUR '20K SPENDING SPREE FOR \$1990' OFFER CAN INCLUDE LUXURY PACKAGE UPGRADES SUCH AS:

- Ducted air-conditioning
- Stone kitchen benchtops
- Higher ceilings
- Recessed downlights

Speak to a consultant today for details.



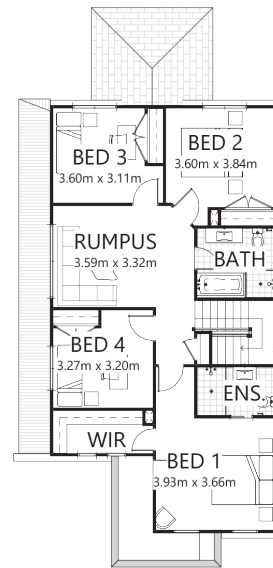
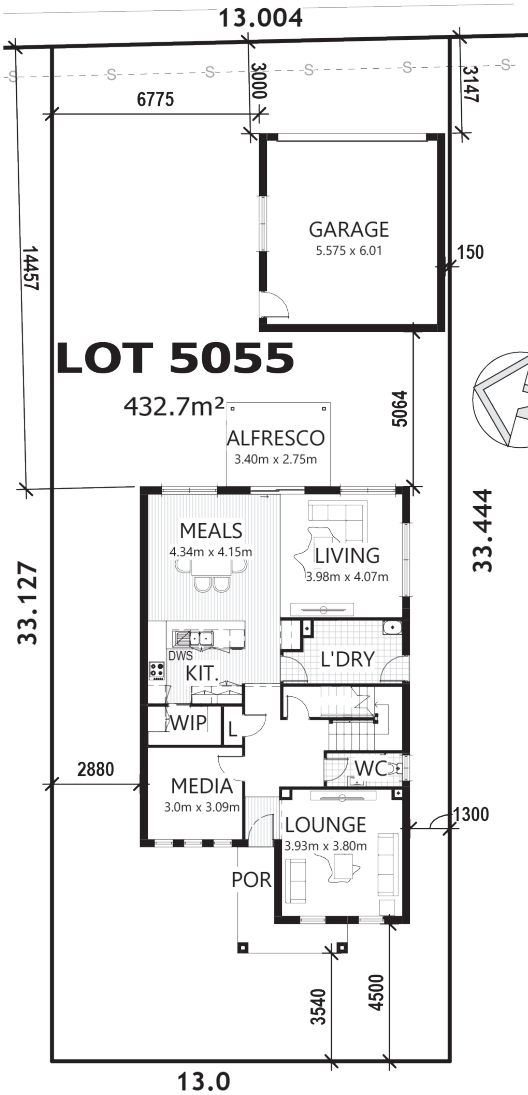
bellriverhomes.com.au



¹Includes garage, alfresco & porch. *Images are for illustrative purposes only and may include options not included in price. Please talk to a Bellriver consultant for a full list of inclusions. Package price is based on January 2020 pricelist. Bellriver Homes reserves the right to change specifications & prices without notice.

PROPOSED SITING OF YOUR NEW BELLRIVER HOME

PROPOSED ROAD



HARBOUR BOULEVARD

SIMPLIFIED CDC

Note: This is a preliminary siting and is subject to a clear copy of title and approval of the builder.

This siting is subject to developer approval, rescod (state building regulations) and council requirements (if required).

Land siting acceptance:

Sign 1:

Sign 2:

Date:

bellriverhomes.com.au

