

HOUSE & LAND PACKAGES

\$1000 DEPOSIT
Secure your package today

RED HOT AUTUMN SPECIAL
~~WAS \$523,670 NOW~~
\$499,999



SOMERTON 24

4 2 2

\$499,999

THE URBAN PROJECT
AFFORDABLE HOMES

Lot 5
Benjamin Circuit
Singleton, NSW 2330

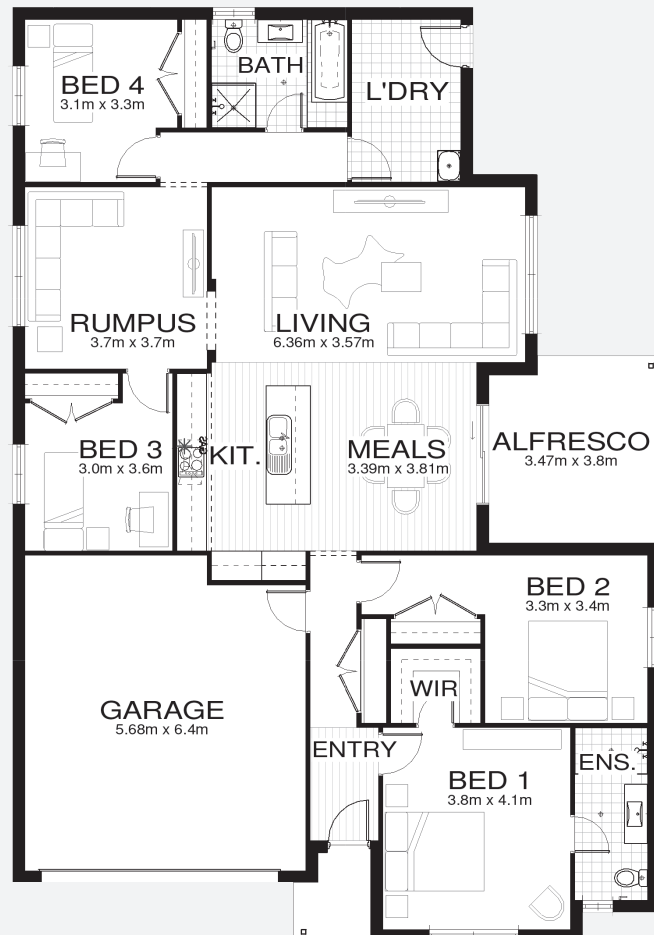
Total area* 219.3m²
Block size 642.3m²

Bellriver Urban packages feature:

- Urban Series specifications & inclusions
- Basix report inclusive of rainwater tank
- Site costs & service connections
- Quality laminate flooring throughout
- Quality carpet to bedrooms
- Westinghouse S/S appliances
- Westinghouse S/S 900mm rangehood
- Triple coated paint system
- 90mm wall frames

This package also includes:

- Coloured concrete driveway & path
- BRH standard ceramic tiling to alfresco and porch
- Brick mailbox (from BRH face brick to match home)
- Clothesline and concrete path (up to 10m² for path)
- Turf to front & rear
- 20mm stone kitchen benchtops
- Ducted A/C



bellriverhomes.com.au



*Includes garage, alfresco & porch. *Images are for illustrative purposes only and may include options not included in price. Please talk to a Bellriver consultant for a full list of inclusions. Package price is based on November 2018 pricelist. Price is subject to soil test and contour survey. Bellriver Homes reserves the right to change specifications & prices without notice.