

# HOUSE & LAND PACKAGES

**\$1000 DEPOSIT**  
Secure your package today

RED HOT AUTUMN SPECIAL  
WAS \$492,290 NOW  
**\$475,000**



## BAYSWATER 20

4 2 2

**\$475,000**

THE URBAN PROJECT  
AFFORDABLE HOMES

**Lot 7**  
**Benjamin Circuit**  
**Singleton, NSW 2330**

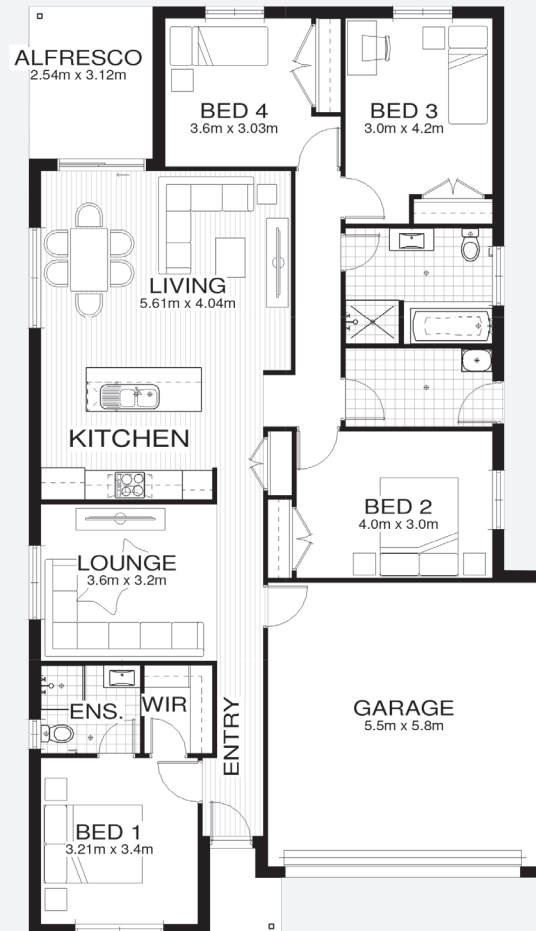
**Total area<sup>†</sup> 185.2m<sup>2</sup>**  
**Block size 639.5m<sup>2</sup>**

### Bellriver Urban packages feature:

- Urban Series specifications & inclusions
- Basix report inclusive of rainwater tank
- Site costs & service connections
- Quality laminate flooring throughout
- Quality carpet to bedrooms
- Westinghouse S/S appliances
- Westinghouse S/S 900mm rangehood
- Triple coated paint system
- 90mm wall frames

### This package also includes:

- Coloured concrete driveway & path
- BRH standard ceramic tiling to alfresco and porch
- Brick mailbox (from BRH face brick to match home)
- Clothesline and concrete path (up to 10m<sup>2</sup> for path)
- Turf to front & rear
- 20mm stone kitchen benchtops
- Ducted A/C



[bellriverhomes.com.au](http://bellriverhomes.com.au)

**BELLRIVER**

\*Includes garage, alfresco & porch. \*Images are for illustrative purposes only and may include options not included in price. Please talk to a Bellriver consultant for a full list of inclusions. Package price is based on November 2018 pricelist. Price is subject to soil test and contour survey. Bellriver Homes reserves the right to change specifications & prices without notice.