

# HOUSE & LAND PACKAGES

**\$1000 DEPOSIT**  
Secure your package today

~~WAS \$605,500~~  
**NOW ONLY \$559,900**



## PINEDALE 12

3 1.5 1

# \$559,900

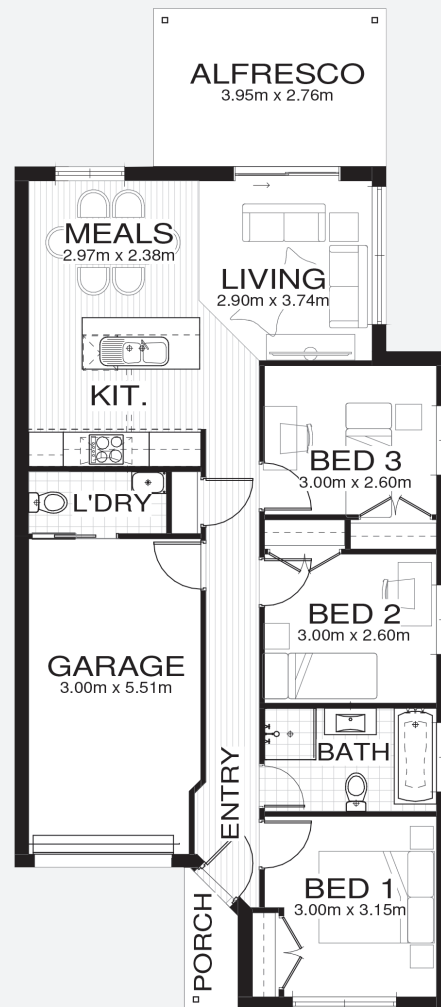
**THE URBAN PROJECT**  
AFFORDABLE HOMES

**Lot 224, Gurner Ave  
Cowpasture Estate  
Austral NSW 2179**

**Total area<sup>†</sup> 112.4m<sup>2</sup>  
Block size 316.4m<sup>2</sup>**

### Package features:

- Urban Series specifications & inclusions
- Basix report inclusive of rainwater tank
- Quality laminate flooring throughout
- Quality carpet to bedrooms
- Stainless steel appliances
- Stainless steel 900mm rangehood
- Triple coated paint system
- 90mm wall frames



[bellriverhomes.com.au](http://bellriverhomes.com.au)

**BELLRIVER**

\*Includes garage, alfresco & porch. \*Images are for illustrative purposes only and may include options not included in price. Please talk to a Bellriver consultant for a full list of inclusions. Package price is based on November 2018 pricelist. Price is subject to soil test and contour survey. Bellriver Homes reserves the right to change specifications & prices without notice.