

HOUSE & LAND PACKAGES

\$1000 DEPOSIT
Secure your package today

~~WAS \$605,500~~
NOW ONLY \$559,900



PINEDALE 12

3 1.5 1

\$559,900

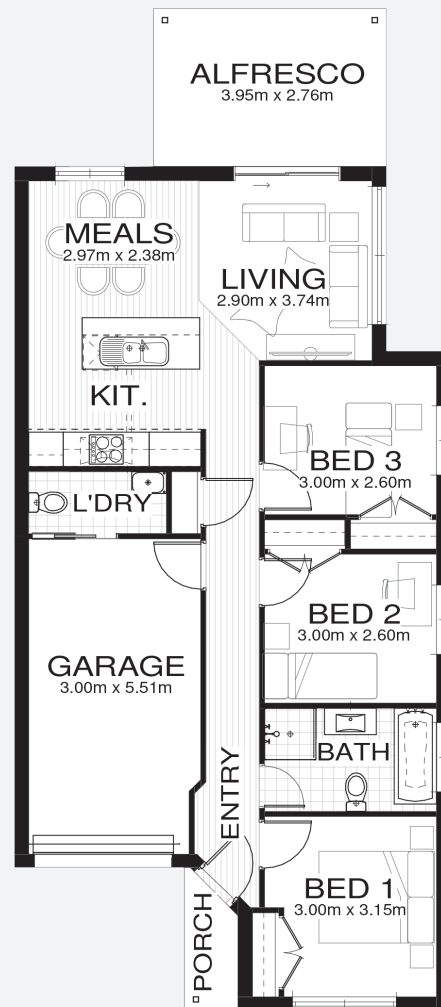
THE URBAN PROJECT
AFFORDABLE HOMES

**Lot 228, Gurner Ave
Cowpasture Estate
Austral NSW 2179**

**Total area[†] 112.4m²
Block size 316.4m²**

Package features:

- Urban Series specifications & inclusions
- Basix report inclusive of rainwater tank
- Quality laminate flooring throughout
- Quality carpet to bedrooms
- Stainless steel appliances
- Stainless steel 900mm rangehood
- Triple coated paint system
- 90mm wall frames



bellriverhomes.com.au

BELLRIVER

*Includes garage, alfresco & porch. *Images are for illustrative purposes only and may include options not included in price. Please talk to a Bellriver consultant for a full list of inclusions. Package price is based on November 2018 pricelist. Price is subject to soil test and contour survey. Bellriver Homes reserves the right to change specifications & prices without notice.