

# HOUSE & LAND PACKAGES

**\$1000 DEPOSIT**  
Secure your package today

**\$20,000 SPENDING SPREE FREE**  
FOR \$1990



## SURREY 23

4 2 2

**\$664,500**

**THE URBAN PROJECT**  
AFFORDABLE HOMES

**Lot 3451, Farmgate Cres.  
Calderwood Estate  
Calderwood, NSW 2527**

**House size<sup>†</sup> 210.0m<sup>2</sup>  
House price \$314,500**

**Land size 513.7m<sup>2</sup>  
Land price \$350,000**

### Bellriver Urban packages feature:

- Urban Series specifications & inclusions
- Basix report inclusive of rainwater tank
- Site costs & service connections
- Quality laminate flooring throughout
- Quality carpet to balance
- Westinghouse S/S appliances
- Westinghouse S/S 900mm rangehood
- Triple coated paint system
- 90mm wall frames
- Plain concrete to porch & alfresco

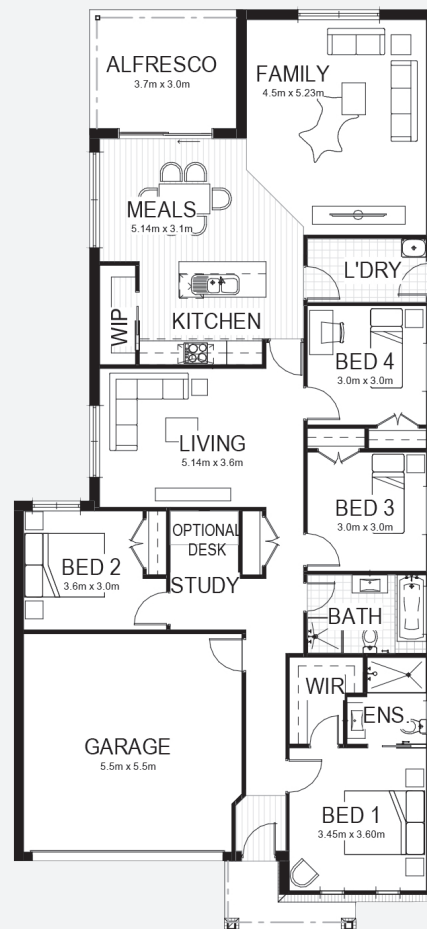
### This package also includes:

- Lennox façade
- Concrete driveway & path

### OUR '20K SPENDING SPREE FOR \$1990' OFFER CAN INCLUDE LUXURY PACKAGE UPGRADES SUCH AS:

- Ducted air-conditioning
- Stone kitchen benchtops
- Higher ceilings
- Recessed downlights

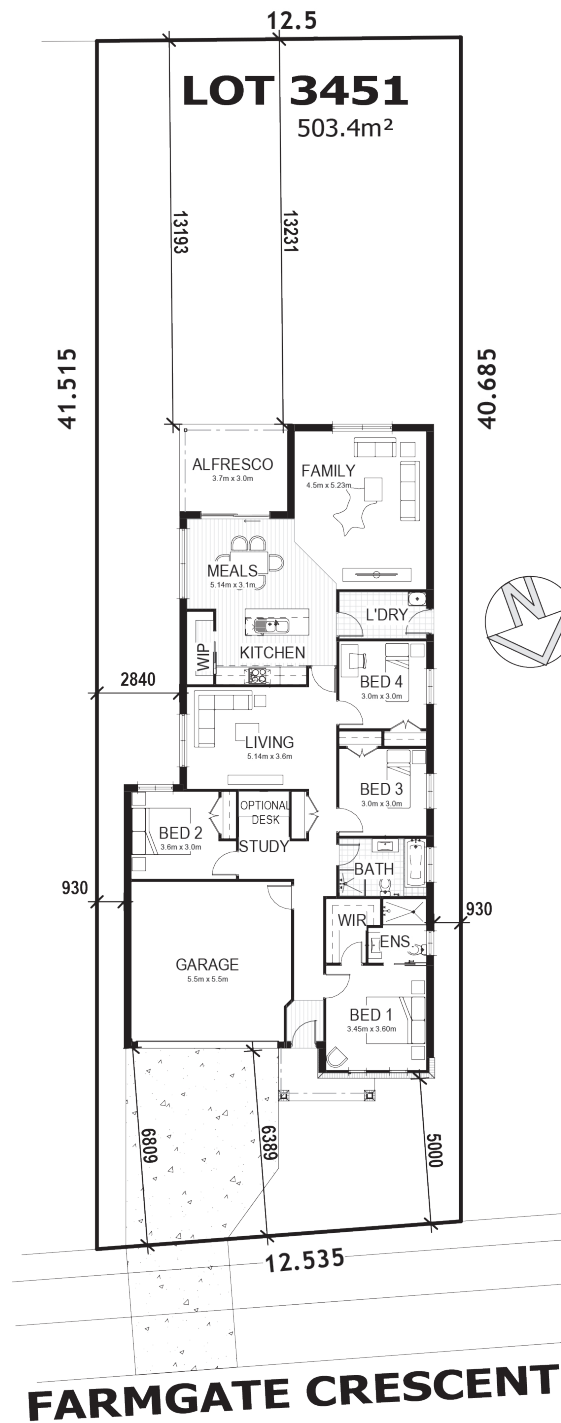
**Speak to a consultant today for details.**



[bellriverhomes.com.au](http://bellriverhomes.com.au)



# PROPOSED SITING OF YOUR NEW BELLRIVER HOME



## SIMPLIFIED CDC

**Note:** This is a preliminary siting and is subject to a clear copy of title and approval of the builder.

This siting is subject to developer approval, rescode (state building regulations) and council requirements (if required).

## Land siting acceptance:

Sign 1:

Sign 2:

Date:

[bellriverhomes.com.au](http://bellriverhomes.com.au)

