

**HOUSE  
& LAND  
PACKAGES**

**\$1000  
DEPOSIT**  
Secure your  
package  
today



## BAYSWATER 197

4 2 2

# \$590,550

### Lot 3652

Calderwood Valley

Calderwood, NSW 2527

Total under-roof area<sup>†</sup> 197.0m<sup>2</sup>

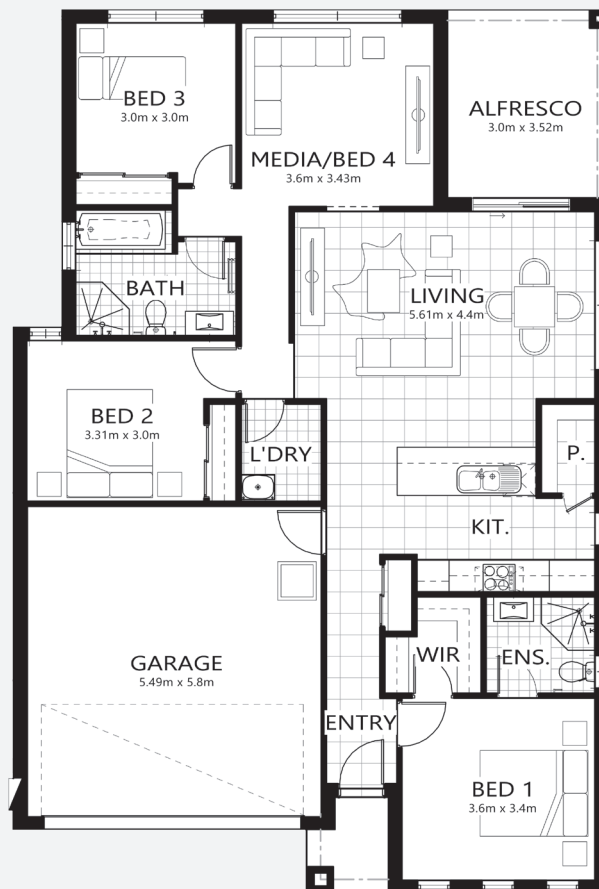
Block size 312.5m<sup>2</sup>

#### Bellriver Benchmark packages feature:

- Benchmark specifications & inclusions
- Site costs & service connections
- Reverse cycle air-conditioning
- 20mm stone kitchen benchtops
- Quality carpet and tiles throughout
- Westinghouse S/S appliances (incl. dishwasher & microwave)
- Westinghouse S/S 900mm rangehood
- Hettich soft close doors & drawers
- 90mm wall frames
- Timber venetian blinds
- Glazed external entry door
- Wall-hung bathroom vanities
- Key locked windows
- Fitted fly screens

#### This package also includes:

- Coloured concrete driveway & path
- BRH standard ceramic tiling to alfresco and porch
- Brick mailbox (from BRH face brick to match home)
- Turf to front & rear



[bellriverhomes.com.au](http://bellriverhomes.com.au)

**BELLRIVER**

<sup>†</sup>Includes garage, alfresco, porch & eaves. \*Images are for illustrative purposes only and may include options not included in price. Please talk to a Bellriver consultant for a full list of inclusions. Package price is based on July 2018 pricelist. Price is subject to soil test and contour survey. Bellriver Homes reserves the right to change specifications & prices without notice.