

# HOUSE & LAND PACKAGES

**\$1000 DEPOSIT**  
Secure your package today

**\$20,000 SPENDING SPREE**  
FOR \$1990



## OAKDALE 19

4 3 1

**\$658,800**

**THE URBAN PROJECT**  
AFFORDABLE HOMES

**Lot 501, Hillston Cct  
The Heights Estate  
Gregory Hills, NSW 2557**

**House size<sup>†</sup> 179.4m<sup>2</sup>  
House price \$336,300**

**Land size 251.4m<sup>2</sup>  
Land price \$322,500**

### Bellriver Urban packages feature:

- Urban Series specifications & inclusions
- Basix report inclusive of rainwater tank
- Site costs & service connections
- Quality laminate flooring throughout
- Quality carpet to balance
- Westinghouse S/S appliances
- Westinghouse S/S 900mm rangehood
- Triple coated paint system
- 90mm wall frames
- Plain concrete to porch

### This package also includes:

- Toulouse façade
- Concrete driveway & path

**OUR '20K SPENDING SPREE FOR \$1990' OFFER CAN INCLUDE LUXURY PACKAGE UPGRADES SUCH AS:**

- Ducted air-conditioning
- Stone kitchen benchtops
- Higher ceilings
- Recessed downlights

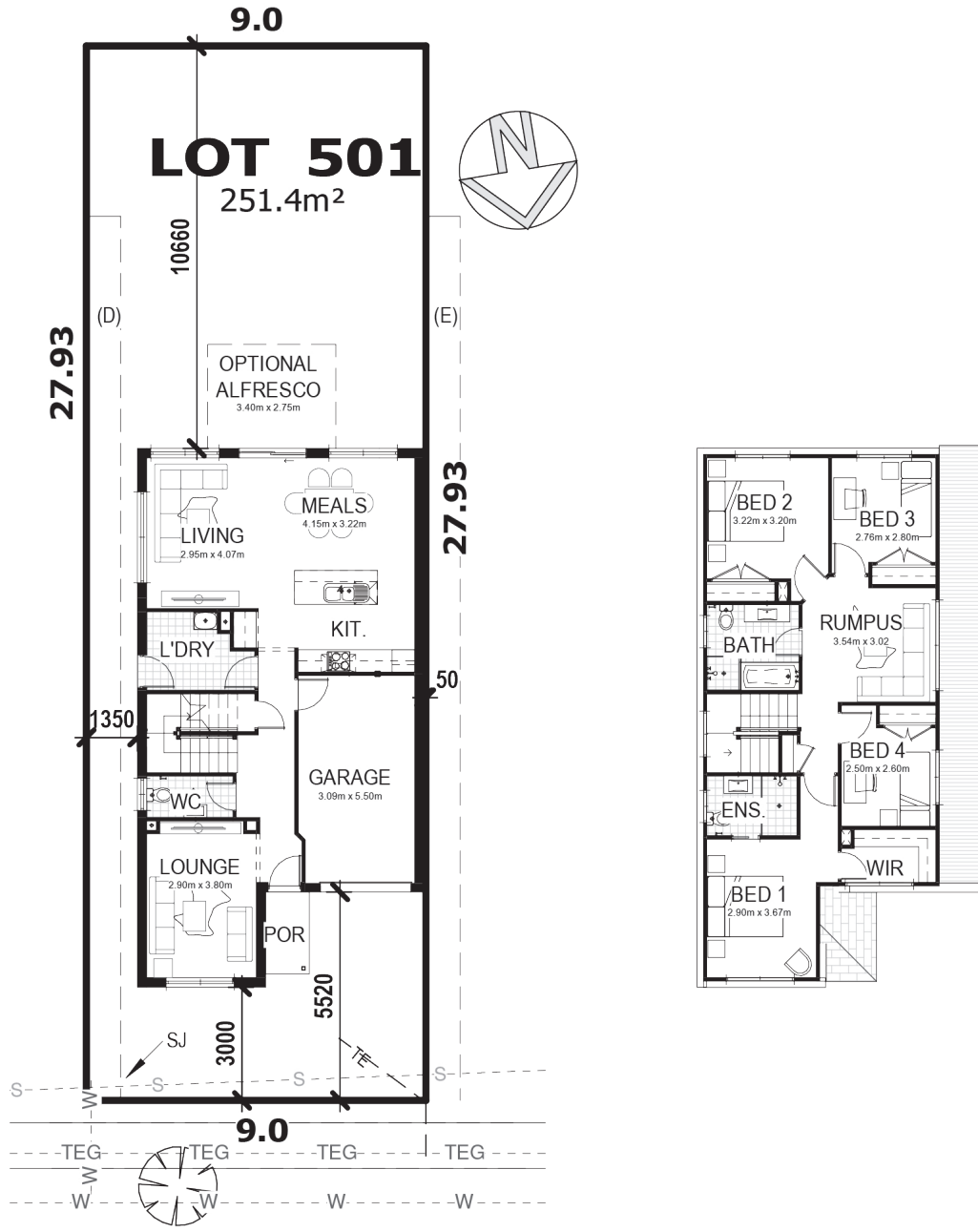
**Speak to a consultant today for details.**



[bellriverhomes.com.au](http://bellriverhomes.com.au)



# PROPOSED SITING OF YOUR NEW BELLRIVER HOME



## HILLSTON CIRCUIT

### SIMPLIFIED CDC

**Note:** This is a preliminary siting and is subject to a clear copy of title and approval of the builder.

This siting is subject to developer approval, rescode (state building regulations) and council requirements (if required).

### Land siting acceptance:

Sign 1:	Sign 2:	Date:
---------	---------	-------

[bellriverhomes.com.au](http://bellriverhomes.com.au)



\*Includes garage, alfresco & porch where included. \*Images are for illustrative purposes only and may include options not included in price. Please talk to a Bellriver consultant for a full list of inclusions. Package price is based on July 2020 pricelist. Bellriver Homes reserves the right to change specifications & prices without notice.