

**FIXED PRICE  
HOUSE  
& LAND  
PACKAGES**

**\$1000  
DEPOSIT**  
Secure your  
package  
today



**BRONTE 24**

4 3 2

**\$770,725**

**THE  
URBAN  
PROJECT**  
AFFORDABLE  
HOMES

**Lot 4083**

**Jordan Springs East**

**Jordan Springs NSW 2747**

**Total under-roof area<sup>1</sup> 223.64m<sup>2</sup>**

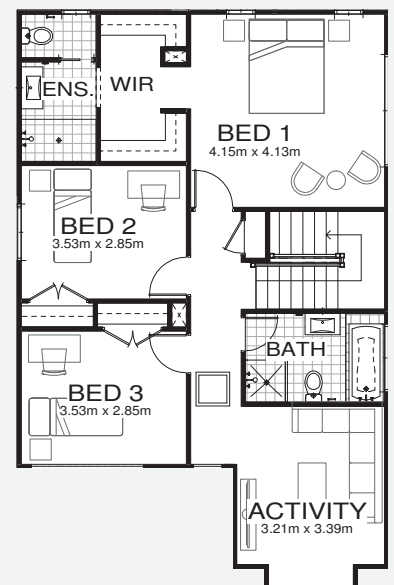
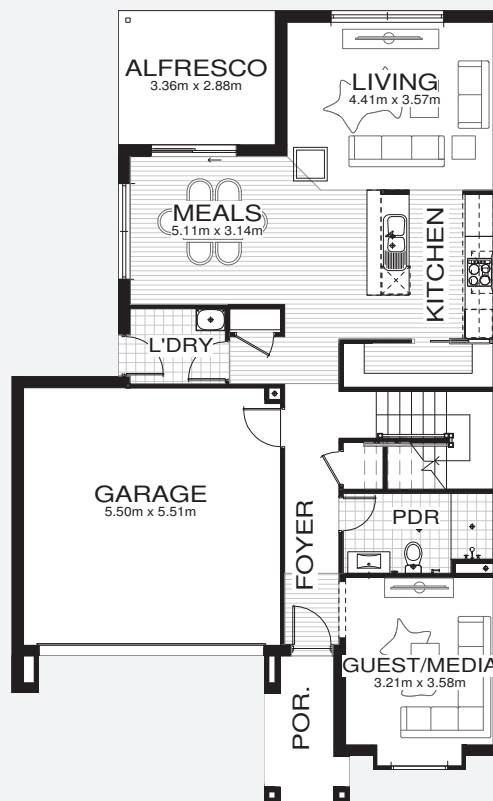
**Block size 312.5m<sup>2</sup>**

**Bellriver Urban packages feature:**

- Urban Series specifications & inclusions
- Fixed price site costs & service connections
- Basix report inclusive of rainwater tank
- Quality laminate flooring throughout
- Quality carpet to bedrooms
- Stainless steel appliances
- Stainless steel 900mm rangehood
- Triple coated paint system
- 90mm wall frames

**This package also includes:**

- Coloured concrete driveway & path



[bellriverhomes.com.au](http://bellriverhomes.com.au)



**BELLRIVER**

<sup>1</sup>Includes garage, alfresco, porch & eaves. \*Images are for illustrative purposes only and may include options not included in price. Please talk to a Bellriver consultant for a full list of inclusions. Package price is based on February 2018 pricelist. Price is subject to soil report and contour survey. Bellriver Homes reserves the right to change specifications & prices without notice. INK 2736-17.

