

**FIXED PRICE
HOUSE
& LAND
PACKAGES**

**\$1000
DEPOSIT**
Secure your
package
today



BAYSWATER 24

4 2 2

\$648,250

**THE
URBAN
PROJECT**
AFFORDABLE
HOMES

Lot 133

Kembla Grange Estate

Kembla Grange, NSW 2526

Total under-roof area[†] 218.4m²

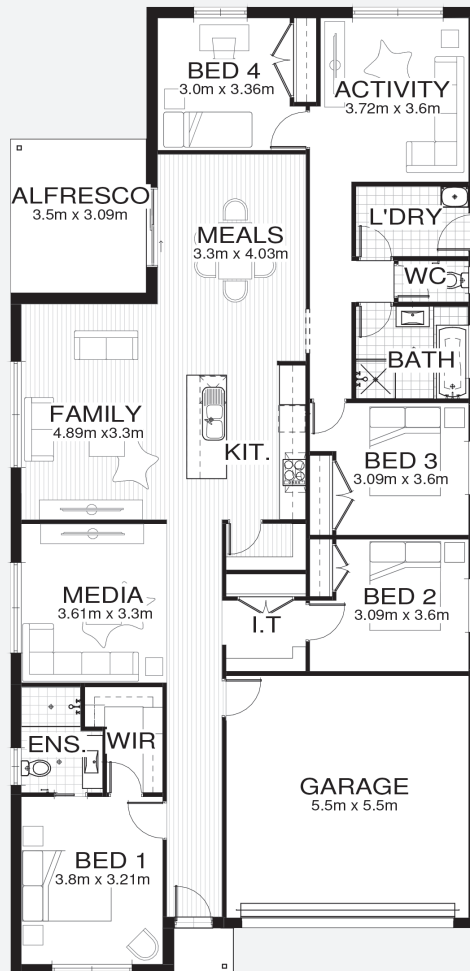
Block size 460.0m²

Bellriver Urban packages feature:

- Urban Series specifications & inclusions
- Fixed price site costs & service connections
- Basix report inclusive of rainwater tank
- Quality laminate flooring throughout
- Quality carpet to bedrooms
- Stainless steel appliances
- Stainless steel 900mm rangehood
- Triple coated paint system
- 90mm wall frames

This package also includes:

- Coloured concrete driveway & path

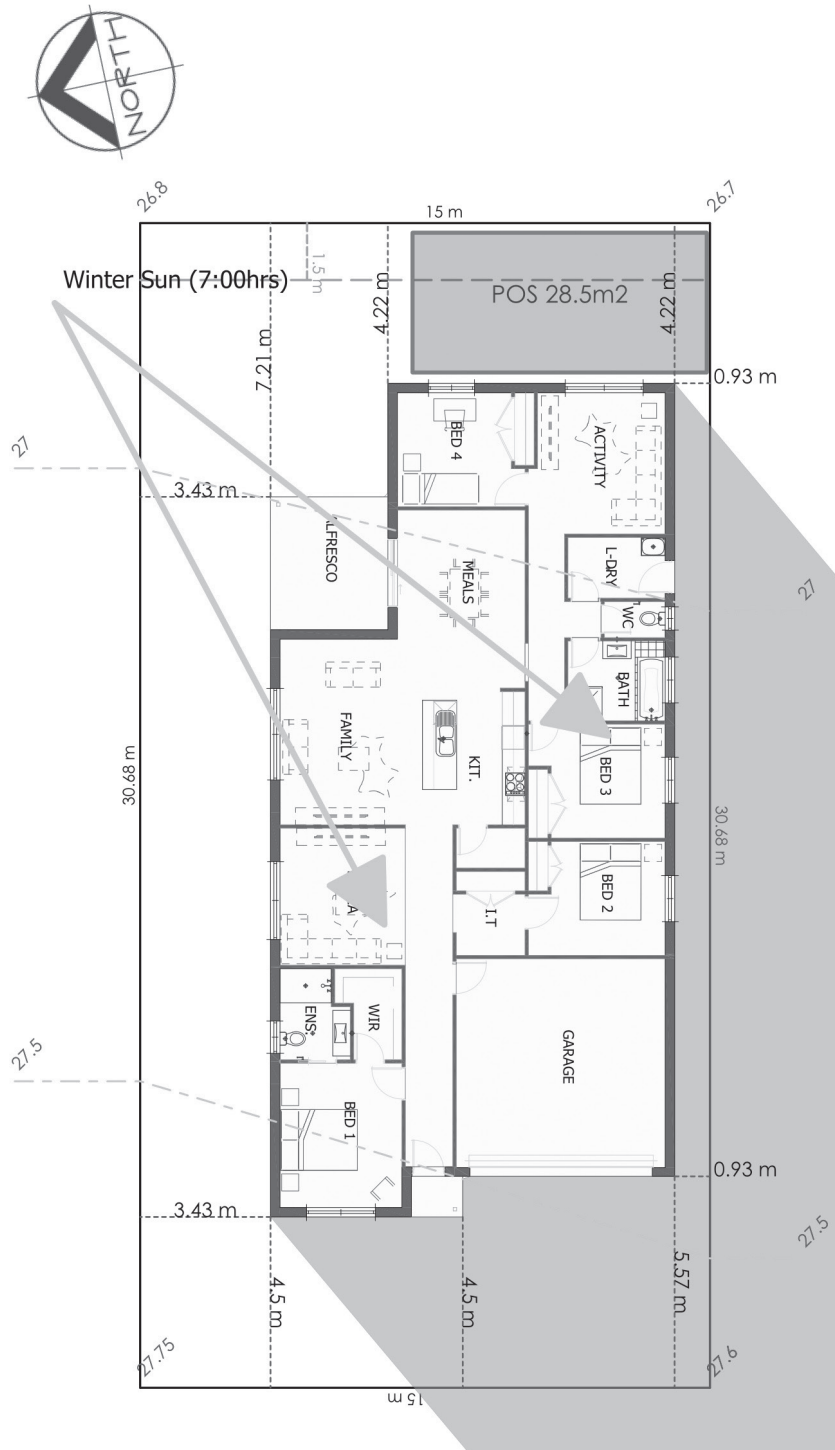


bellriverhomes.com.au



[†]Includes garage, alfresco, porch & eaves. *Images are for illustrative purposes only and may include options not included in price. Please talk to a Bellriver consultant for a full list of inclusions. Package price is based on February 2018 pricelist. Bellriver Homes reserves the right to change specifications & prices without notice. INK 2736-03.

PROPOSED SITING OF YOUR NEW BELLRIVER HOME



Note: This is a preliminary siting and is subject to a clear copy of title and approval of the builder. This siting is subject to developer approval, rescod (state building regulations) and council requirements (if required).

Land siting acceptance:

Sign 1:

Sign 2:

Date:

bellriverhomes.com.au

