

# HOUSE & LAND PACKAGES

**\$1000 DEPOSIT**  
Secure your package today

**\$20,000 SPENDING FREE**  
FOR \$1990



## PEMBROOKE 229 SPLIT

4 2 2

**\$687,800**

**THE URBAN PROJECT**  
AFFORDABLE HOMES

**Lot 139 Road No.2  
Sanctuary Views Estate  
Kembla Grange, NSW 2526**

**House size<sup>†</sup> 228.6m<sup>2</sup>  
House price \$367,800**

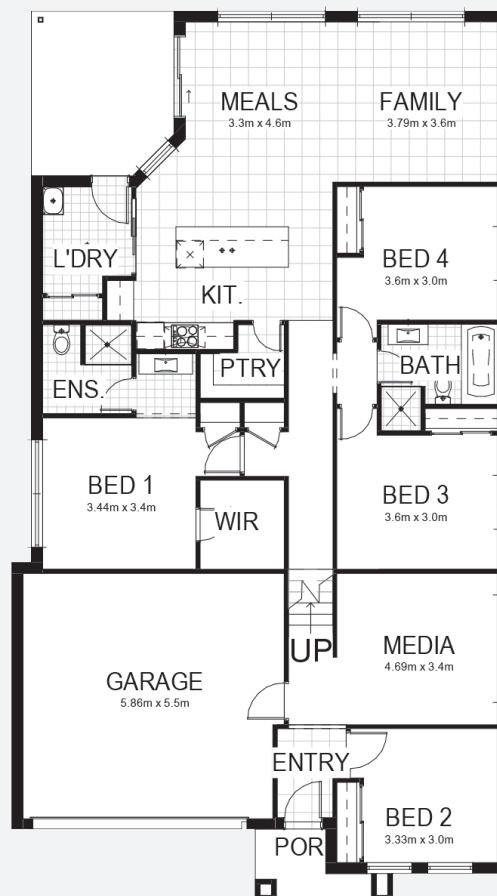
**Land size 370.2m<sup>2</sup>  
Land price \$320,000**

**Bellriver Urban packages feature:**

- Urban Series specifications & inclusions
- Basix report inclusive of rainwater tank
- Site costs & service connections
- Quality laminate flooring throughout
- Quality carpet to balance
- Westinghouse S/S appliances
- Westinghouse S/S 900mm rangehood
- Triple coated paint system
- 90mm wall frames
- Plain concrete to alfresco & porch

**This package also includes:**

- Portino façade
- Concrete driveway & path
- Brick mailbox (from BRH face brick to match home)

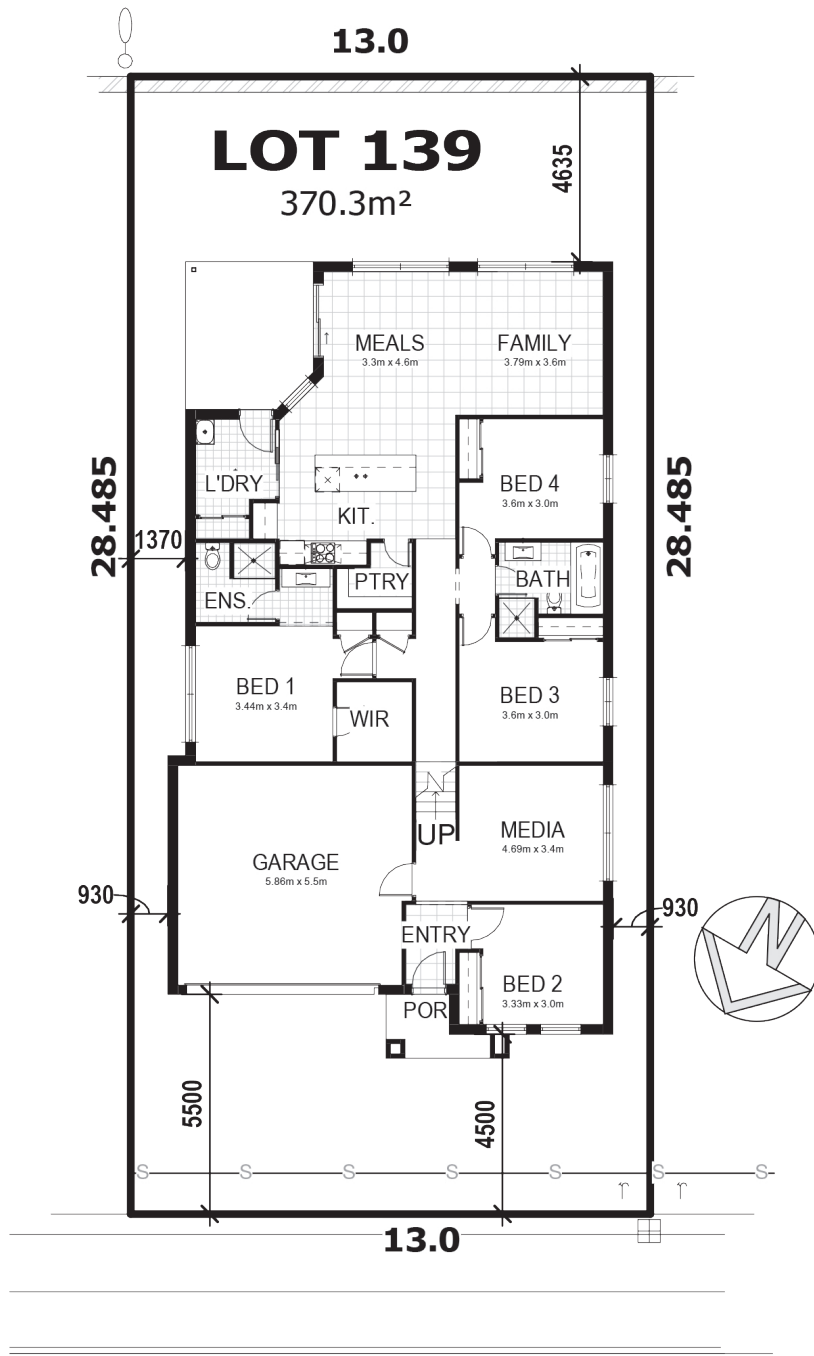


[bellriverhomes.com.au](http://bellriverhomes.com.au)



\*Includes garage, alfresco & porch. \*Images are for illustrative purposes only and may include options not included in price. Please talk to a Bellriver consultant for a full list of inclusions. Package price is based on January 2020 pricelist. Bellriver Homes reserves the right to change specifications & prices without notice.

# PROPOSED SITING OF YOUR NEW BELLRIVER HOME



## ROAD No. 2

### SIMPLIFIED CDC

**Note:** This is a preliminary siting and is subject to a clear copy of title and approval of the builder.

This siting is subject to developer approval, rescod (state building regulations) and council requirements (if required).

### Land siting acceptance:

Sign 1:

Sign 2:

Date:

[bellriverhomes.com.au](http://bellriverhomes.com.au)



\*Includes garage, alfresco & porch. \*Images are for illustrative purposes only and may include options not included in price. Please talk to a Bellriver consultant for a full list of inclusions. Package price is based on January 2020 pricelist. Price is subject to soil test and contour survey. Bellriver Homes reserves the right to change specifications & prices without notice.