

# HOUSE & LAND PACKAGES

**\$1000 DEPOSIT**  
Secure your package today

**\$20,000 SPENDING SPREE**  
FOR \$1990



## BAYSWATER 18

4 2 2

**\$697,710**

**THE URBAN PROJECT**  
AFFORDABLE HOMES

**Lot 120**  
**Duck Farm Estate**  
**Leppington, NSW 2179**

**House size<sup>†</sup> 173.2m<sup>2</sup>**  
**House price \$282,710**

**Land size 340.0m<sup>2</sup>**  
**Land price \$415,000**

**Bellriver Urban packages feature:**

- Urban Series specifications & inclusions
- Basix report inclusive of rainwater tank
- Site costs & service connections
- Quality laminate flooring throughout
- Quality carpet to balance
- Westinghouse S/S appliances
- Westinghouse S/S 900mm rangehood
- Triple coated paint system
- 90mm wall frames
- Plain concrete to alfresco & porch

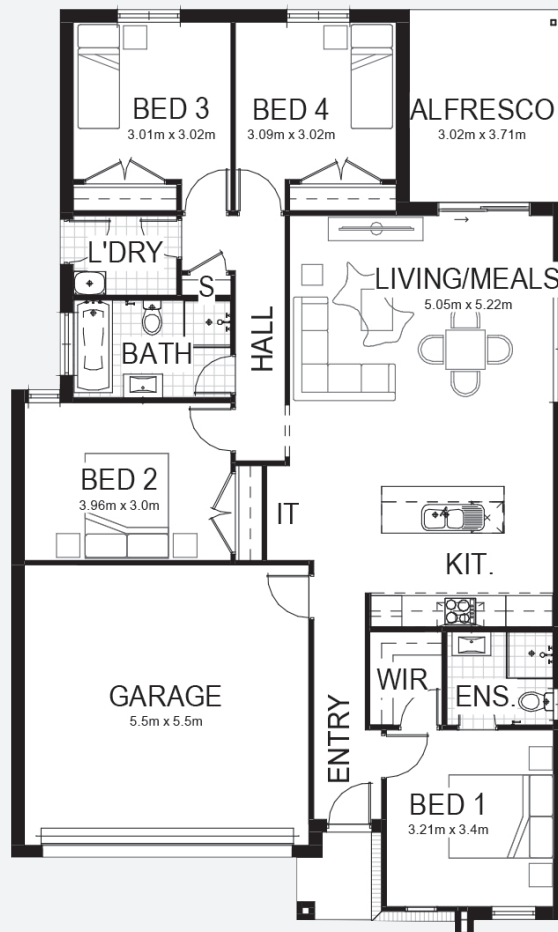
**This package also includes:**

- Piermont façade
- Concrete driveway & path
- Price capping

**OUR '20K SPENDING SPREE FOR \$1990' OFFER CAN INCLUDE LUXURY PACKAGE UPGRADES SUCH AS:**

- Ducted air-conditioning
- Stone kitchen benchtops
- Higher ceilings
- Recessed downlights

**Speak to a consultant today for details.**

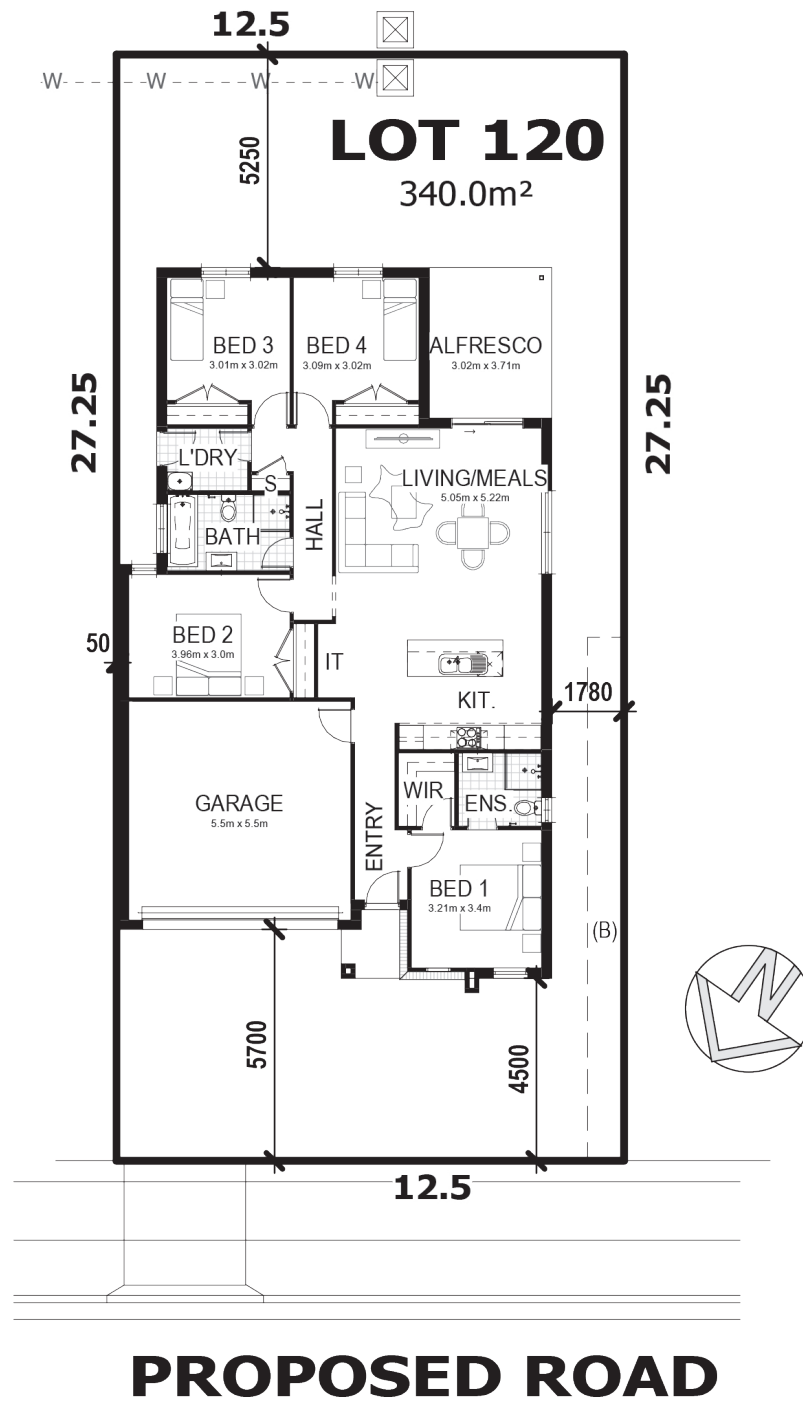


[bellriverhomes.com.au](http://bellriverhomes.com.au)



\*Includes garage, alfresco & porch. \*Images are for illustrative purposes only and may include options not included in price. Please talk to a Bellriver consultant for a full list of inclusions. Package price is based on January 2020 pricelist. Bellriver Homes reserves the right to change specifications & prices without notice.

# PROPOSED SITING OF YOUR NEW BELLRIVER HOME



## SIMPLIFIED CDC

**Note:** This is a preliminary siting and is subject to a clear copy of title and approval of the builder.  
This siting is subject to developer approval, rescode (state building regulations) and council requirements (if required).

## Land siting acceptance:

Sign 1:	Sign 2:	Date:
---------	---------	-------

[bellriverhomes.com.au](http://bellriverhomes.com.au)



\*Includes garage, alfresco & porch. \*Images are for illustrative purposes only and may include options not included in price. Please talk to a Bellriver consultant for a full list of inclusions. Package price is based on January 2020 pricelist. Bellriver Homes reserves the right to change specifications & prices without notice.