

# HOUSE & LAND PACKAGES

**\$1000 DEPOSIT**  
Secure your package today

**\$20,000 SPENDING SPREE FREE**  
FOR \$1990



## OAKDALE 19

4 2 1

**\$679,990**

**THE URBAN PROJECT**  
AFFORDABLE HOMES

**Lot 206**  
**Duck Farm Estate**  
**Leppington, NSW 2179**

**House size<sup>†</sup> 179.4m<sup>2</sup>**  
**House price \$329,990**

**Land size 250.2m<sup>2</sup>**  
**Land price \$350,000**

### Bellriver Urban packages feature:

- Urban Series specifications & inclusions
- Basix report inclusive of rainwater tank
- Site costs & service connections
- Quality laminate flooring throughout
- Quality carpet to balance
- Westinghouse S/S appliances
- Westinghouse S/S 900mm rangehood
- Triple coated paint system
- 90mm wall frames
- Plain concrete to porch

### This package also includes:

- Toulouse façade
- Concrete driveway & path

### OUR '20K SPENDING SPREE FOR \$1990' OFFER CAN INCLUDE LUXURY PACKAGE UPGRADES SUCH AS:

- Ducted air-conditioning
- Stone kitchen benchtops
- Higher ceilings
- Recessed downlights

**Speak to a consultant today for details.**



[bellriverhomes.com.au](http://bellriverhomes.com.au)



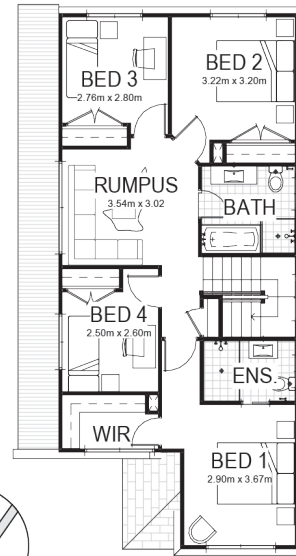
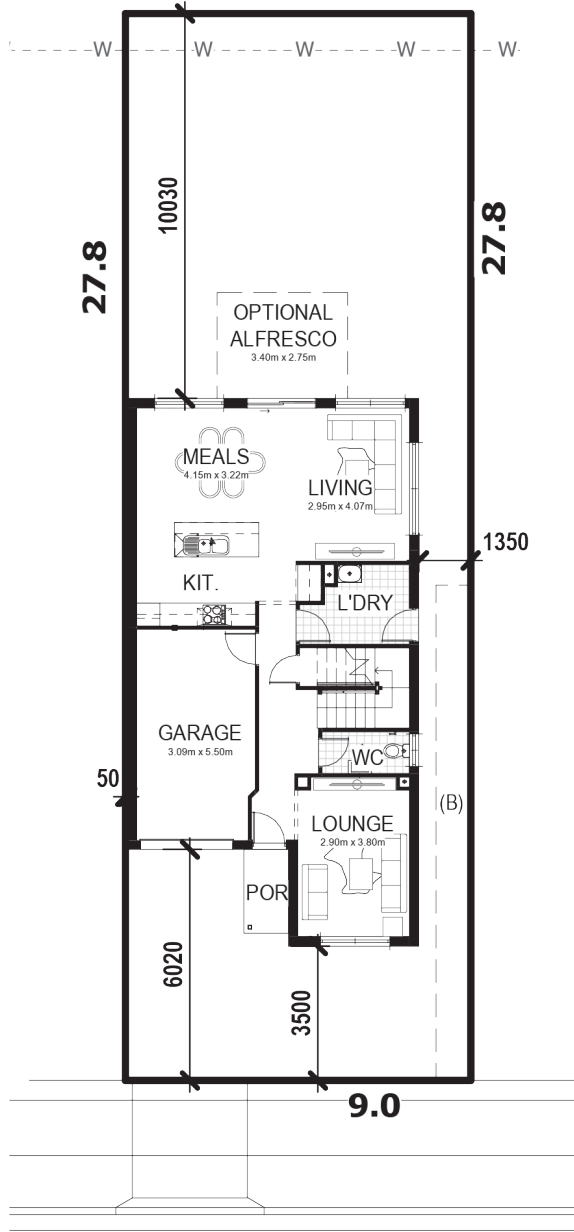
\*Includes garage, alfresco & porch where included. †Images are for illustrative purposes only and may include options not included in price. Please talk to a Bellriver consultant for a full list of inclusions. Package price is based on July 2020 pricelist. Bellriver Homes reserves the right to change specifications & prices without notice.

# PROPOSED SITING OF YOUR NEW BELLRIVER HOME

## LOT 206

250.0m<sup>2</sup>

9.0



## PROPOSED ROAD

### SIMPLIFIED CDC

**Note:** This is a preliminary siting and is subject to a clear copy of title and approval of the builder.

This siting is subject to developer approval, rescod (state building regulations) and council requirements (if required).

### Land siting acceptance:

Sign 1:

Sign 2:

Date:

[bellriverhomes.com.au](http://bellriverhomes.com.au)

