

HOUSE & LAND PACKAGES

\$1000 DEPOSIT
Secure your package today



ROCHESTER 14

3 2 1

\$599,990

THE URBAN PROJECT
AFFORDABLE HOMES

Lot 4260
Willowdale Estate
Leppington, NSW 2179

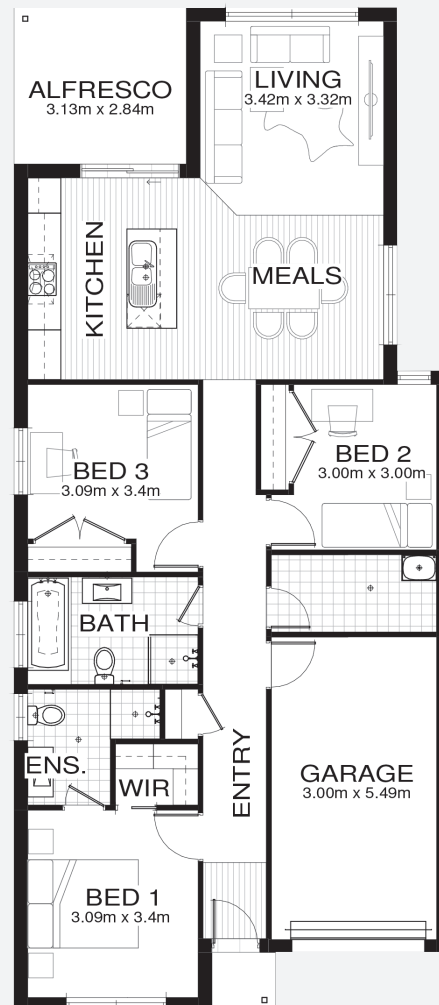
Total under-roof area* 134.5m²
Block size 282.0m²

Bellriver Urban packages feature:

- Urban Series specifications & inclusions
- Basix report inclusive of rainwater tank
- Site costs & service connections
- Quality laminate flooring throughout
- Quality carpet to bedrooms
- Westinghouse S/S appliances
- Westinghouse S/S 900mm rangehood
- Triple coated paint system
- 90mm wall frames

This package also includes:

- Coloured concrete driveway & path



bellriverhomes.com.au



*Includes garage, alfresco, porch & eaves. *Images are for illustrative purposes only and may include options not included in price. Please talk to a Bellriver consultant for a full list of inclusions. Package price is based on July 2018 pricelist. Price is subject to soil test and contour survey. Bellriver Homes reserves the right to change specifications & prices without notice.