

HOUSE & LAND PACKAGES

\$1000 DEPOSIT
Secure your package today

~~WAS \$744,940~~
NOW ONLY \$725,940



AVALON 24

4 2.5 2

\$725,940

THE URBAN PROJECT
AFFORDABLE HOMES

**Lot 2203, Heron Ave
Newpark Estate
Marsden Park, NSW 2765**

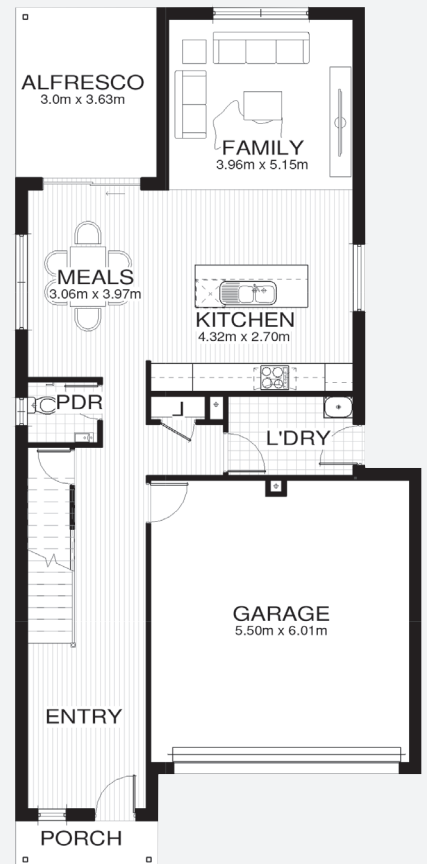
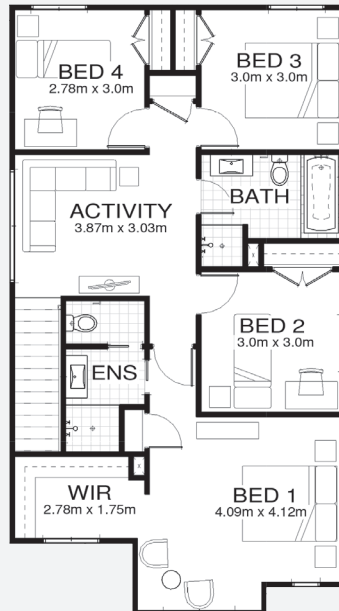
**Total area[†] 222.5m²
Block size 300.0m²**

Bellriver Urban packages feature:

- Urban Series specifications & inclusions
- Basix report inclusive of rainwater tank
- Site costs & service connections
- Quality laminate flooring throughout
- Quality carpet to bedrooms
- Westinghouse S/S appliances
- Westinghouse S/S 900mm rangehood
- Triple coated paint system
- 90mm wall frames

This package also includes:

- Driveway
- Additional sites
- Ducted A/C
- 20mm Caesarstone benchtops



bellriverhomes.com.au



*Includes garage, alfresco & porch. *Images are for illustrative purposes only and may include options not included in price. Please talk to a Bellriver consultant for a full list of inclusions. Package price is based on November 2018 pricelist. Price is subject to soil test and contour survey. Bellriver Homes reserves the right to change specifications & prices without notice.