

# HOUSE & LAND PACKAGES

**\$1000 DEPOSIT**  
Secure your package today



## BRONTE 24

4 3 2

# \$869,995

**THE URBAN PROJECT**  
AFFORDABLE HOMES

### Lot 3730

Marsden Park NSW 2765

Total under-roof area† **223.6m<sup>2</sup>**

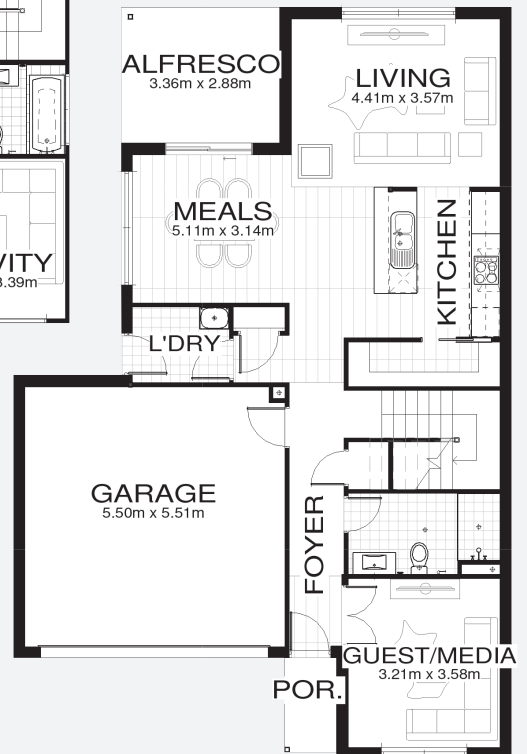
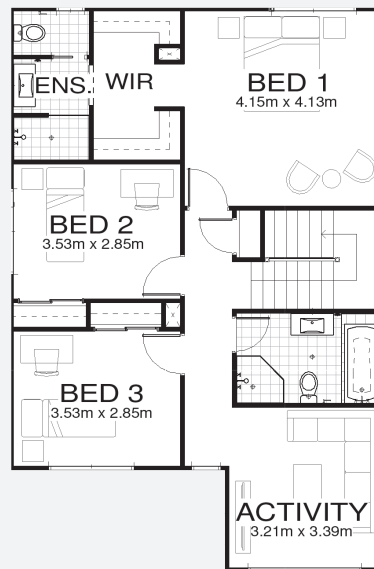
Block size **375.0m<sup>2</sup>**

#### Bellriver Urban packages feature:

- Urban Series specifications & inclusions
- Basix report inclusive of rainwater tank
- Site costs & service connections
- Quality laminate flooring throughout
- Quality carpet to bedrooms
- Westinghouse S/S appliances
- Westinghouse S/S 900mm rangehood
- Triple coated paint system
- 90mm wall frames

#### This package also includes:

- Coloured concrete driveway & path
- Ducted A/C
- 20mm caesarstone island top



[bellriverhomes.com.au](http://bellriverhomes.com.au)



\*Includes garage, alfresco, porch & eaves. \*Images are for illustrative purposes only and may include options not included in price. Please talk to a Bellriver consultant for a full list of inclusions. Package price is based on July 2018 pricelist. Price is subject to soil test and contour survey. Bellriver Homes reserves the right to change specifications & prices without notice.