

# HOUSE & LAND PACKAGES

**\$1000 DEPOSIT**  
Secure your package today



## AVALON 24

4 2.5 2

**\$764,400**

**THE URBAN PROJECT**  
AFFORDABLE HOMES

### Lot 4151

### New Park Estate

### Marsden Park, NSW 2765

Total under-roof area<sup>†</sup> **222.5m<sup>2</sup>**

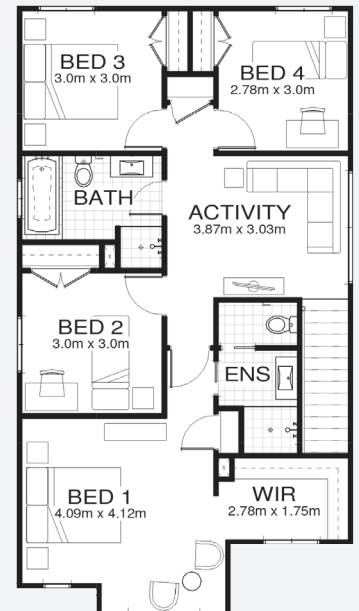
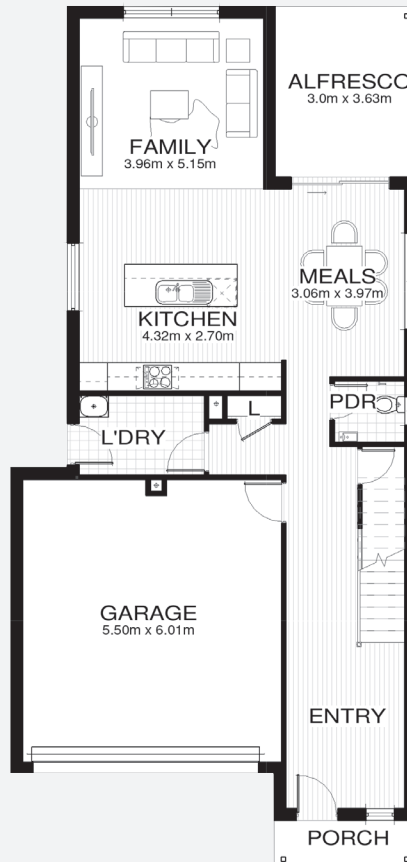
Block size **300.0m<sup>2</sup>**

#### Bellriver Urban packages feature:

- Urban Series specifications & inclusions
- Basix report inclusive of rainwater tank
- Site costs & service connections
- Quality laminate flooring throughout
- Quality carpet to bedrooms
- Westinghouse S/S appliances
- Westinghouse S/S 900mm rangehood
- Triple coated paint system
- 90mm wall frames

#### This package also includes:

- Coloured concrete driveway & path
- BRH standard ceramic tiling to alfresco and porch
- Brick mailbox (from BRH face brick to match home)
- Clothesline and concrete path (up to 10m<sup>2</sup> for path)
- Turf to front & rear



[bellriverhomes.com.au](http://bellriverhomes.com.au)



<sup>†</sup>Includes garage, alfresco, porch & eaves. \*Images are for illustrative purposes only and may include options not included in price. Please talk to a Bellriver consultant for a full list of inclusions. Package price is based on July 2018 pricelist. Price is subject to soil test and contour survey. Bellriver Homes reserves the right to change specifications & prices without notice.