

**HOUSE  
& LAND  
PACKAGES**

**\$1000  
DEPOSIT**  
Secure your  
package  
today



## BAYSWATER 20

4 2 2

# \$796,405

### Lot 4615

### Elara Estate

### Marsden Park, NSW 2765

**Total under-roof area\*** 185.2m<sup>2</sup>

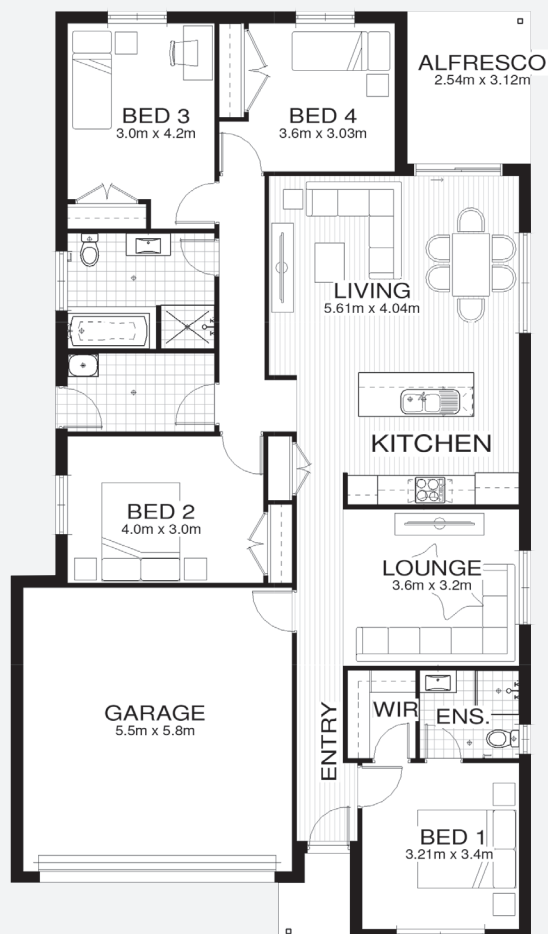
**Block size** 378.0m<sup>2</sup>

#### Bellriver Benchmark packages feature:

- Benchmark specifications & inclusions
- Site costs & service connections
- Quality carpet and tiles throughout
- Westinghouse S/S appliances (incl. dishwasher & microwave)
- Westinghouse S/S 900mm rangehood
- Hettich soft close doors & drawers
- 90mm wall frames
- Timber venetian blinds
- Glazed external entry door
- Wall-hung bathroom vanities
- Key locked windows
- Fitted fly screens

#### This package also includes:

- Coloured concrete driveway & path
- Brick mailbox (from BRH face brick to match home)
- Ducted reverse cycle air-conditioning



[bellriverhomes.com.au](http://bellriverhomes.com.au)



\*Includes garage, alfresco, porch & eaves. \*Images are for illustrative purposes only and may include options not included in price. Please talk to a Bellriver consultant for a full list of inclusions. Package price is based on July 2018 pricelist. Price is subject to soil test and contour survey. Bellriver Homes reserves the right to change specifications & prices without notice.