



# pinedale 12

HOUSE & LAND \$569,999



— AUSTRAL —  
**OLIVE GROVE**

**3** **1.5** **1**

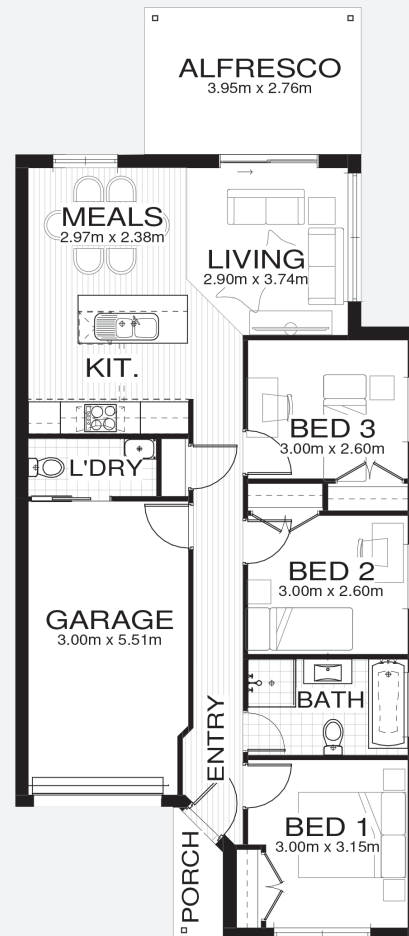
**Total area\*** 111.4m<sup>2</sup>

**Block size** 279.3m<sup>2</sup>

**Lot 16**  
**14th Avenue**  
**Austral NSW 2179**

**PACKAGE FEATURES:**

- Urban Series specifications & inclusions
- Basix report inclusive of rainwater tank
- Quality laminate flooring throughout
- Quality carpet to bedrooms
- Stainless steel appliances
- Stainless steel 900mm rangehood
- Triple coated paint system
- 90mm wall frames



[olivegroveaustral.com.au](http://olivegroveaustral.com.au)



\*Includes garage, alfresco, porch & eaves. \*Images are for illustrative purposes only and may include options not included in price. Please talk to a Bellriver consultant for a full list of inclusions. Package price is based on September 2018 pricelist. Bellriver Homes reserves the right to change specifications & prices without notice. V79684