

HOUSE & LAND PACKAGES

\$1000 DEPOSIT
Secure your package today



BAYSWATER 22

4 2 2

\$614,815

THE URBAN PROJECT
AFFORDABLE HOMES

Proposed Road
Sussex Rise
Sussex Inlet, NSW 2540

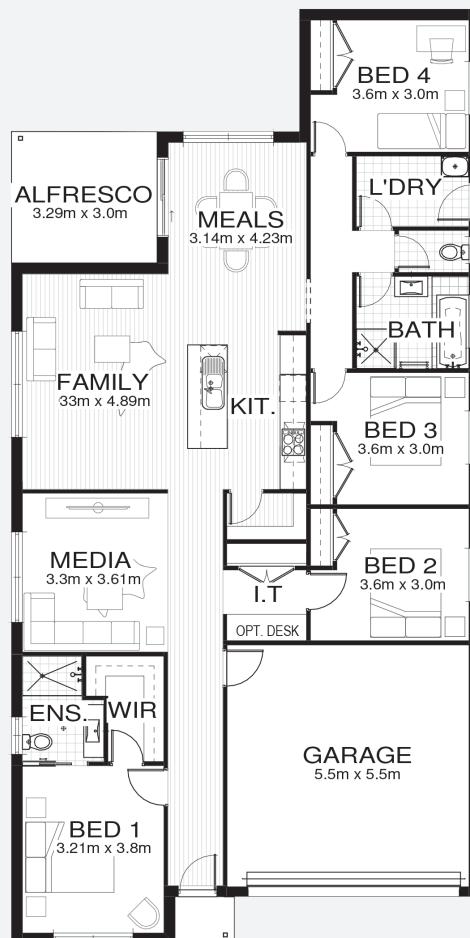
Total area* 201.9m²
Various blocks
available from 629.0m²

Bellriver Urban packages feature:

- Urban Series specifications & inclusions
- Basix report inclusive of rainwater tank
- Site costs & service connections
- Quality laminate flooring throughout
- Quality carpet to bedrooms
- Westinghouse S/S appliances
- Westinghouse S/S 900mm rangehood
- Triple coated paint system
- 90mm wall frames

This package also includes:

- Coloured concrete driveway & path
- Ducted A/C



bellriverhomes.com.au



*Includes garage, alfresco & porch. *Images are for illustrative purposes only and may include options not included in price. Please talk to a Bellriver consultant for a full list of inclusions. Package price is based on November 2018 pricelist. Price is subject to soil test and contour survey. Bellriver Homes reserves the right to change specifications & prices without notice.