

# HOUSE & LAND PACKAGES

**\$1000 DEPOSIT**  
Secure your package today



## PINEDALE 11 MOD

3 2 1

# \$569,990

**THE URBAN PROJECT**  
AFFORDABLE HOMES

### Lot 305

**Settler's Place Estate  
Werrington, NSW 2747**

**House size<sup>†</sup> 101.2m<sup>2</sup>  
House price \$229,990**

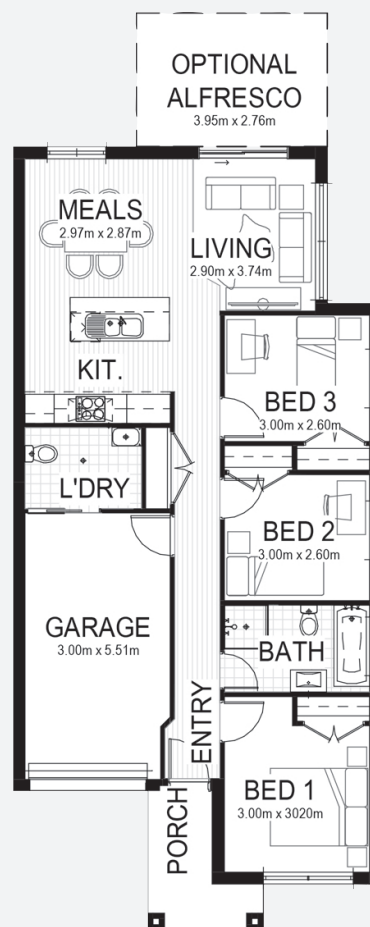
**Land size 250.2m<sup>2</sup>  
Land price \$340,000**

#### Bellriver Urban packages feature:

- Urban Series specifications & inclusions
- Basix report inclusive of rainwater tank
- Site costs & service connections
- Quality laminate flooring throughout
- Quality carpet to balance
- Westinghouse S/S appliances
- Westinghouse S/S 900mm rangehood
- Triple coated paint system
- 90mm wall frames
- Plain concrete to porch & alfresco

#### This package also includes:

- Orleans, Messina or Centro façades
- Concrete driveway & path
- Caesarstone benchtop
- Split A/C
- Acoustic report & requirements



[bellriverhomes.com.au](http://bellriverhomes.com.au)

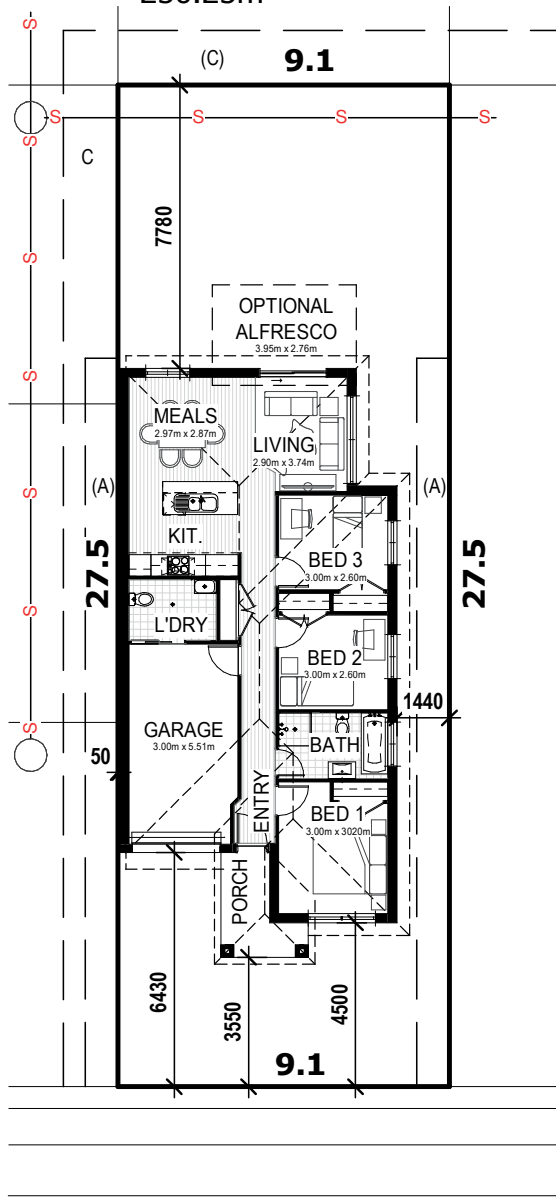
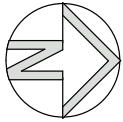


\*Includes garage, alfresco & porch. \*Images are for illustrative purposes only and may include options not included in price. Please talk to a Bellriver consultant for a full list of inclusions. Package price is based on January 2020 pricelist. Bellriver Homes reserves the right to change specifications & prices without notice.

# PROPOSED SITING OF YOUR NEW BELLRIVER HOME

## LOT 305

250.25m<sup>2</sup>



## PROPOSED ROAD



THE ORLEANS FACADE



THE MESSINA FACADE



THE CENTRO FACADE

### SIMPLIFIED CDC

**Note:** This is a preliminary siting and is subject to a clear copy of title and approval of the builder.

This siting is subject to developer approval, rescod (state building regulations) and council requirements (if required).

### Land siting acceptance:

Sign 1:

Sign 2:

Date:

[bellriverhomes.com.au](http://bellriverhomes.com.au)



\*Includes garage, alfresco & porch. \*Images are for illustrative purposes only and may include options not included in price. Please talk to a Bellriver consultant for a full list of inclusions. Package price is based on January 2020 pricelist. Bellriver Homes reserves the right to change specifications & prices without notice.