

HOUSE & LAND PACKAGES

\$1000 DEPOSIT
Secure your package today



ROCHESTER 17 MOD

4 2 1

\$629,500

THE URBAN PROJECT
AFFORDABLE HOMES

Lot 306

**Settler's Place Estate
Werrington, NSW 2747**

**House size[†] 159.7m²
House price \$289,500**

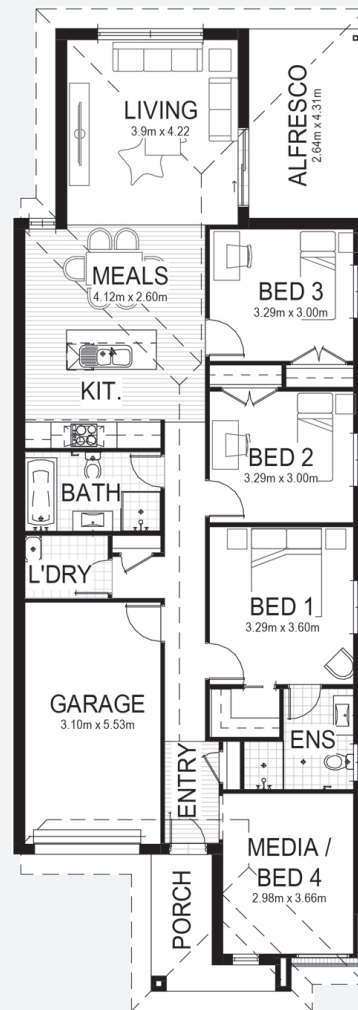
**Land size 250.2m²
Land price \$340,000**

Bellriver Urban packages feature:

- Urban Series specifications & inclusions
- Basix report inclusive of rainwater tank
- Site costs & service connections
- Quality laminate flooring throughout
- Quality carpet to balance
- Westinghouse S/S appliances
- Westinghouse S/S 900mm rangehood
- Triple coated paint system
- 90mm wall frames
- Plain concrete to porch & alfresco

This package also includes:

- Essen, Estella or Sienna façades
- Concrete driveway & path
- Caesarstone benchtop
- Acoustic report & requirements



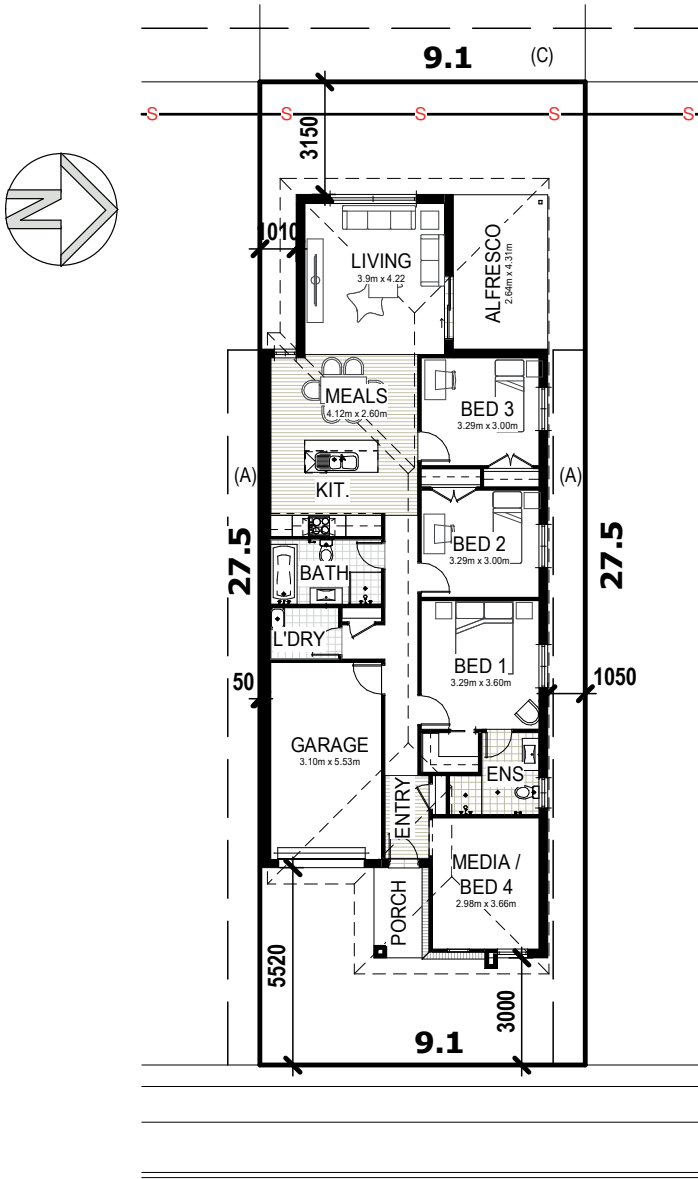
bellriverhomes.com.au



*Includes garage, alfresco & porch. *Images are for illustrative purposes only and may include options not included in price. Please talk to a Bellriver consultant for a full list of inclusions. Package price is based on January 2020 pricelist. Bellriver Homes reserves the right to change specifications & prices without notice.

PROPOSED SITING OF YOUR NEW BELLRIVER HOME

LOT 306 250.25m²



PROPOSED ROAD



THE ESSEN FACADE



THE ESTELLA FACADE



THE SIENNA FACADE

SIMPLIFIED CDC

Note: This is a preliminary siting and is subject to a clear copy of title and approval of the builder.

This siting is subject to developer approval, rescod (state building regulations) and council requirements (if required).

Land siting acceptance:

Sign 1:

Sign 2:

Date:

bellriverhomes.com.au



*Includes garage, alfresco & porch. *Images are for illustrative purposes only and may include options not included in price. Please talk to a Bellriver consultant for a full list of inclusions. Package price is based on January 2020 pricelist. Bellriver Homes reserves the right to change specifications & prices without notice.