

# HOUSE & LAND PACKAGES

**\$1000 DEPOSIT**  
Secure your package today

**SPRING SUPER SALE**



## ROCHESTER 16

4 2 1

**\$743,350**

**THE URBAN PROJECT**  
AFFORDABLE HOMES

**Lot 237, Walan St.  
Ironbark Estate  
Austral, NSW 2179**

**House size<sup>†</sup> 144.8m<sup>2</sup>  
House price \$333,350**

**Land size 314.5m<sup>2</sup>  
Land price \$410,000**

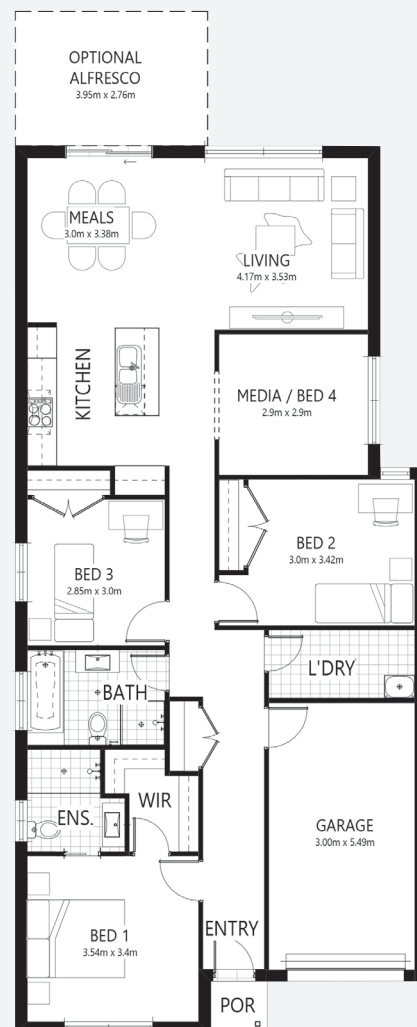
### Bellriver Urban packages feature:

- Urban Series specifications & inclusions
- Basix report inclusive of rainwater tank
- Site costs & service connections
- Quality laminate flooring throughout
- Quality carpet to balance
- Westinghouse S/S appliances
- Westinghouse S/S 900mm rangehood
- Triple coated paint system
- 90mm wall frames
- Plain concrete to porch

### THIS PACKAGE ALSO INCLUDES:

- Estella façade
- Ducted air-conditioning
- 20mm stone benchtops to kitchen
- Concrete driveway & path
- Automatic garage door

\*Conditions apply: Spring Super Sale offer is available to customers who deposit from Monday 7th September 2020. This promotion cannot be used in conjunction with any other promotions offered by Bellriver Homes. The relevant discount will be secured by payment of the non-refundable deposit and will apply to the construction contract only in any eligible house and land package and is not transferable or exchangeable and cannot be taken as cash.

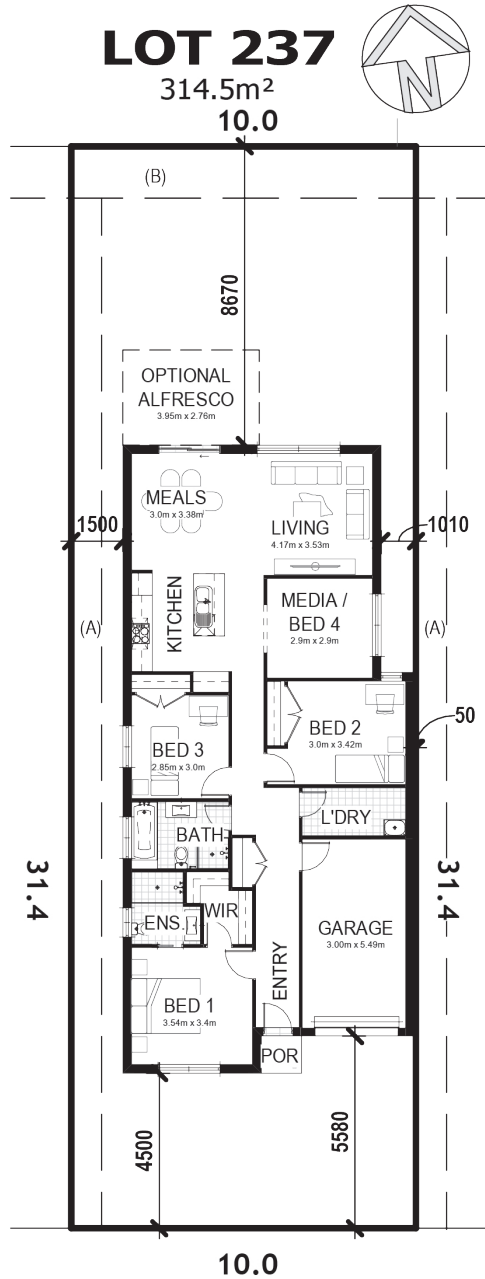


[bellriverhomes.com.au](http://bellriverhomes.com.au)



†Includes garage, alfresco & porch where included. \*Images are for illustrative purposes only and may include options not included in price. Please talk to a Bellriver consultant for a full list of inclusions. Package price is based on October 2020 pricelist. Bellriver Homes reserves the right to change specifications & prices without notice.

# PROPOSED SITING OF YOUR NEW BELLRIVER HOME



**WALAN STREET**

**SIMPLIFIED CDC**

**Note:** This is a preliminary siting and is subject to a clear copy of title and approval of the builder.  
This siting is subject to developer approval, rescode (state building regulations) and council requirements (if required).

**Land siting acceptance:**

Sign 1:	Sign 2:	Date:
---------	---------	-------

[bellriverhomes.com.au](http://bellriverhomes.com.au)



\*Includes garage, alfresco & porch where included. \*Images are for illustrative purposes only and may include options not included in price. Please talk to a Bellriver consultant for a full list of inclusions. Package price is based on October 2020 pricelist. Bellriver Homes reserves the right to change specifications & prices without notice.