

# HOUSE & LAND PACKAGES

**\$1000 DEPOSIT**  
Secure your package today



**KURRAJONG ESTATE**



## ROSEDALE 22

4 2 2

**\$519,900**

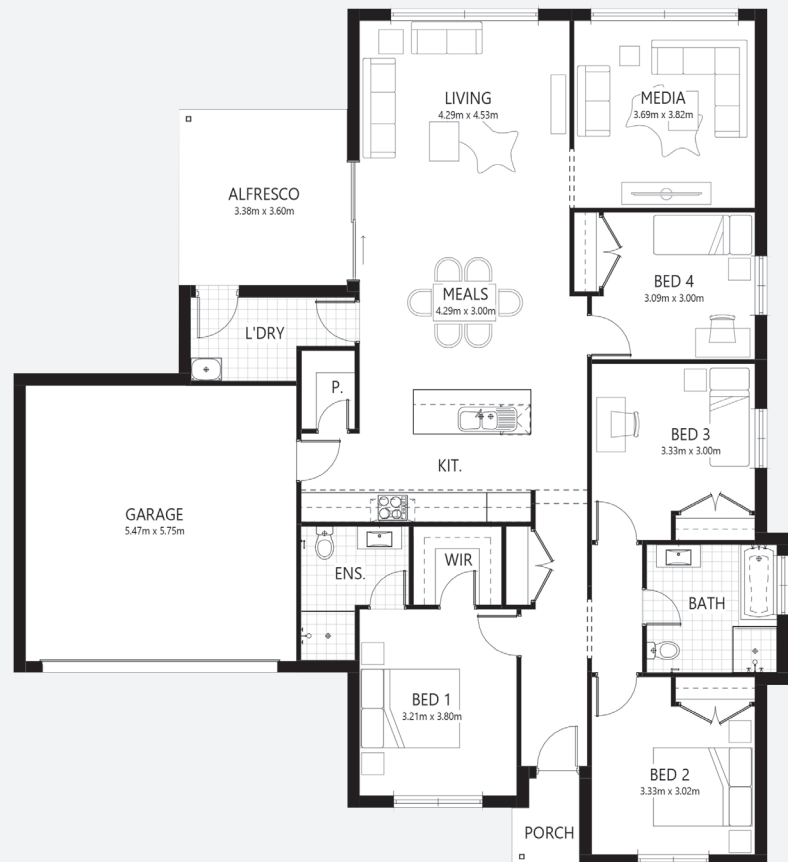
**Lot 13, Yawambi Close  
Kurrajong Estate  
Parkes, NSW 2870**

**House size<sup>†</sup> 207.5m<sup>2</sup>  
House price \$369,900**

**Land size 567.0m<sup>2</sup>  
Land price \$150,000**

### Packages features:

- Basix report inclusive of rainwater tank
- Site costs & service connections
- Colonnade façade
- Ducted air-conditioning
- 20mm stone benchtops to kitchen
- Coloured concrete driveway & path
- Colorbond® roof with insulation blanket
- Automatic garage door
- Quality laminate flooring throughout
- Quality carpet to balance
- Westinghouse S/S appliances
- Westinghouse S/S 900mm rangehood
- Triple coated paint system
- 90mm wall frames
- Plain concrete to porch & alfresco
- R2.0 wall insulation
- R3.5 ceiling insulation
- Price protection until land registration
- BAL report and requirements



[bellriverhomes.com.au](http://bellriverhomes.com.au)



**BELL RIVER COMMUNITIES**

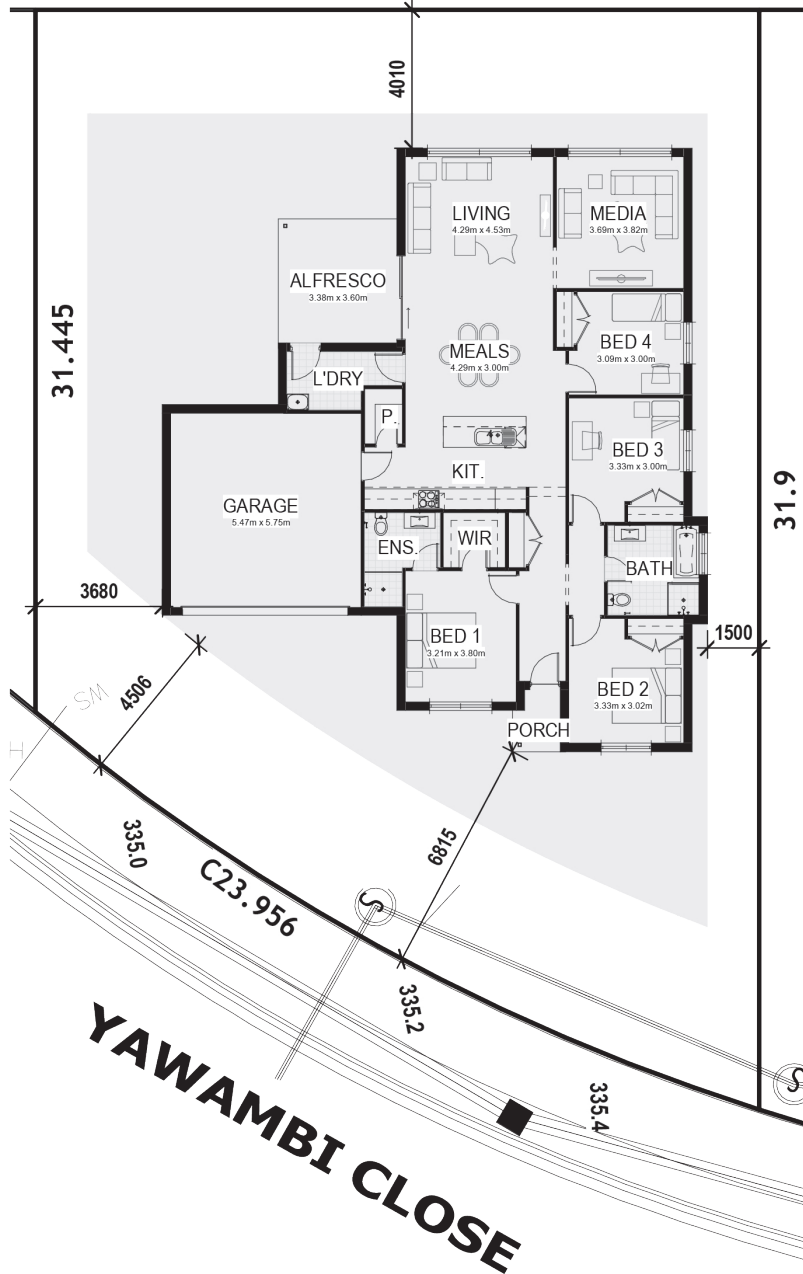
\*Includes garage, alfresco & porch where included. \*Images are for illustrative purposes only and may include options not included in price. Please talk to a Bellriver consultant for a full list of inclusions. Package price is based on April 2021 pricelist. Bellriver Homes reserves the right to change specifications & prices without notice.

# PROPOSED SITING OF YOUR NEW BELLRIVER HOME

## LOT 13

567m<sup>2</sup>

21.07



### SIMPLIFIED CDC

**Note:** This is a preliminary siting and is subject to a clear copy of title and approval of the builder.

This siting is subject to developer approval, rescode (state building regulations) and council requirements (if required).

### Land siting acceptance:

Sign 1:

Sign 2:

Date:

[bellriverhomes.com.au](http://bellriverhomes.com.au)

