

# HOUSE & LAND PACKAGES

**\$1000 DEPOSIT**  
Secure your package today



**KURRAJONG ESTATE**



**BAYSWATER 243**

4 2 2

**\$539,900**

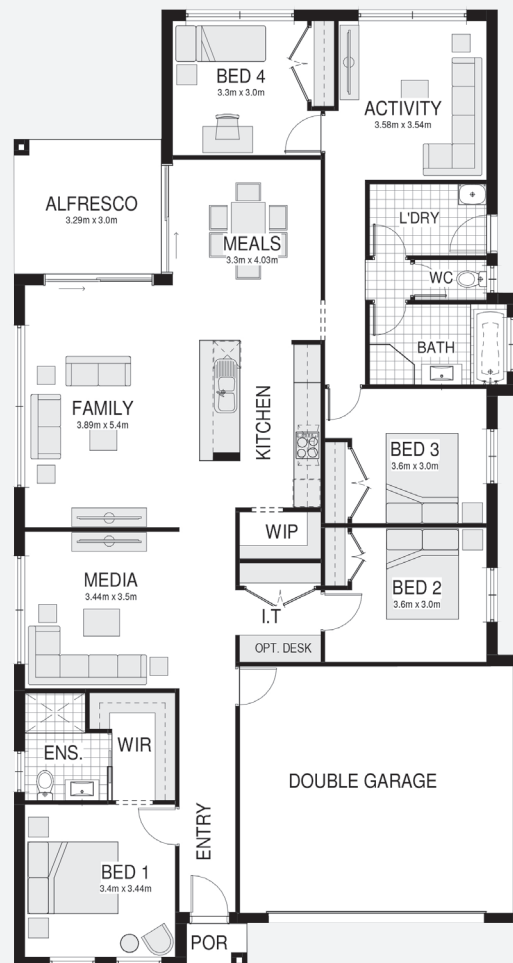
**Lot 5, Yawambi Close  
Kurrajong Estate  
Parkes, NSW 2870**

**House size<sup>†</sup> 219.7m<sup>2</sup>  
House price \$374,900**

**Land size 795.0m<sup>2</sup>  
Land price \$165,000**

**Packages features:**

- Basix report inclusive of rainwater tank
- Site costs & service connections
- Sorrento façade
- Ducted air-conditioning
- 20mm stone benchtops to kitchen
- Coloured concrete driveway & path
- Colorbond® roof with insulation blanket
- Automatic garage door
- Quality laminate flooring throughout
- Quality carpet to balance
- Westinghouse S/S appliances
- Westinghouse S/S 900mm rangehood
- Triple coated paint system
- 90mm wall frames
- Plain concrete to porch & alfresco
- R2.0 wall insulation
- R3.5 ceiling insulation
- Price protection until land registration
- BAL report and requirements

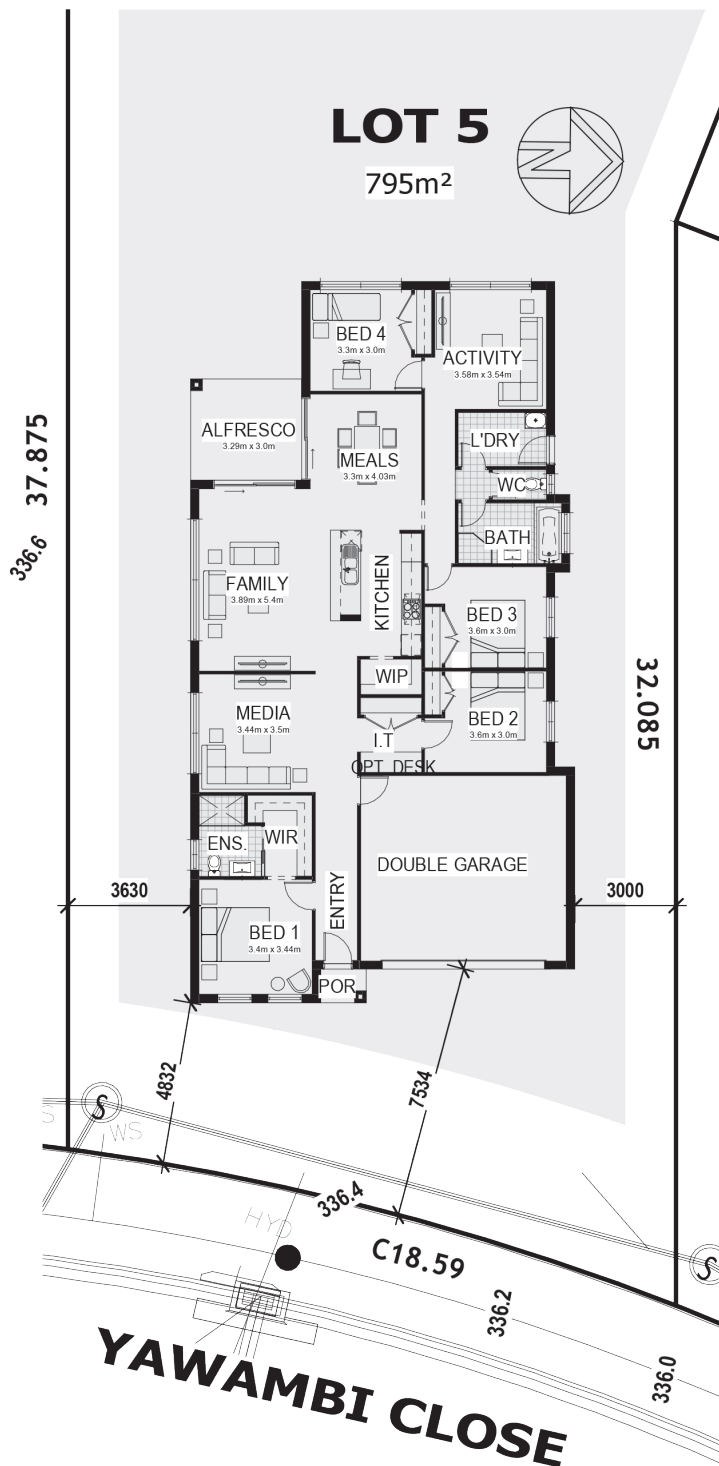


[bellriverhomes.com.au](http://bellriverhomes.com.au)



\*Includes garage, alfresco & porch where included. \*Images are for illustrative purposes only and may include options not included in price. Please talk to a Bellriver consultant for a full list of inclusions. Package price is based on April 2021 pricelist. Bellriver Homes reserves the right to change specifications & prices without notice.

# PROPOSED SITING OF YOUR NEW BELLRIVER HOME



## SIMPLIFIED CDC

**Note:** This is a preliminary siting and is subject to a clear copy of title and approval of the builder.  
This siting is subject to developer approval, rescod (state building regulations) and council requirements (if required).

## Land siting acceptance:

Sign 1:

Sign 2:

Date:

[bellriverhomes.com.au](http://bellriverhomes.com.au)

