

# HOUSE & LAND PACKAGES

**\$1000 DEPOSIT**  
Secure your package today



## TOORAK 21

4 2 2

**\$606,990**

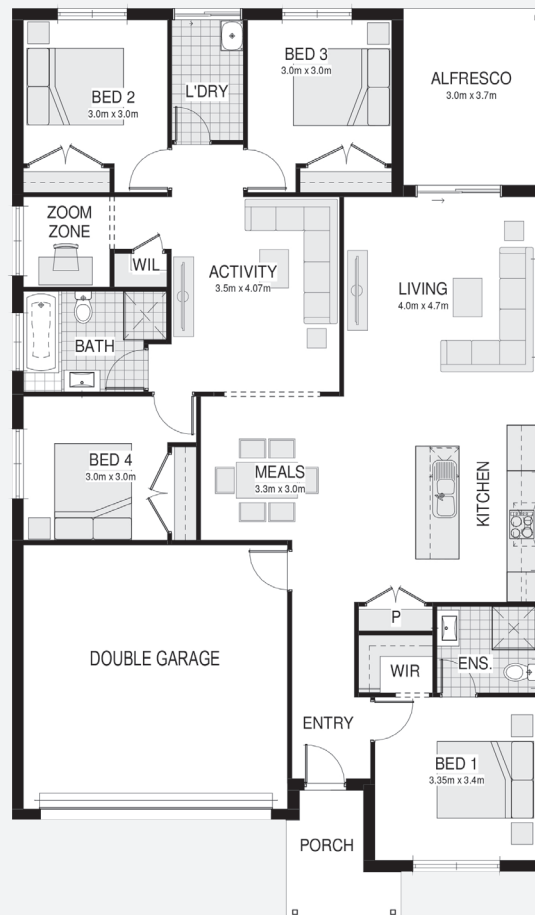
**Lot 2538, Nord Grove  
Katherine's Landing  
Huntlee, NSW 2335**

**House size<sup>†</sup> 194.5m<sup>2</sup>  
House price \$351,990**

**Land size 780.0m<sup>2</sup>  
Land price \$255,000**

### Packages features:

- Basix report inclusive of rainwater tank
- Site costs & service connections
- Lennox façade
- Ducted air-conditioning
- 20mm stone benchtops to kitchen
- Coloured concrete driveway & path
- Colorbond® roof with insulation blanket
- Automatic garage door
- Quality laminate flooring throughout
- Quality carpet to balance
- Westinghouse S/S appliances
- Westinghouse S/S 900mm rangehood
- Triple coated paint system
- 90mm wall frames
- Plain concrete to porch & alfresco
- R2.0 wall insulation
- R3.5 ceiling insulation
- Price protection until land registration
- BAL report and requirements



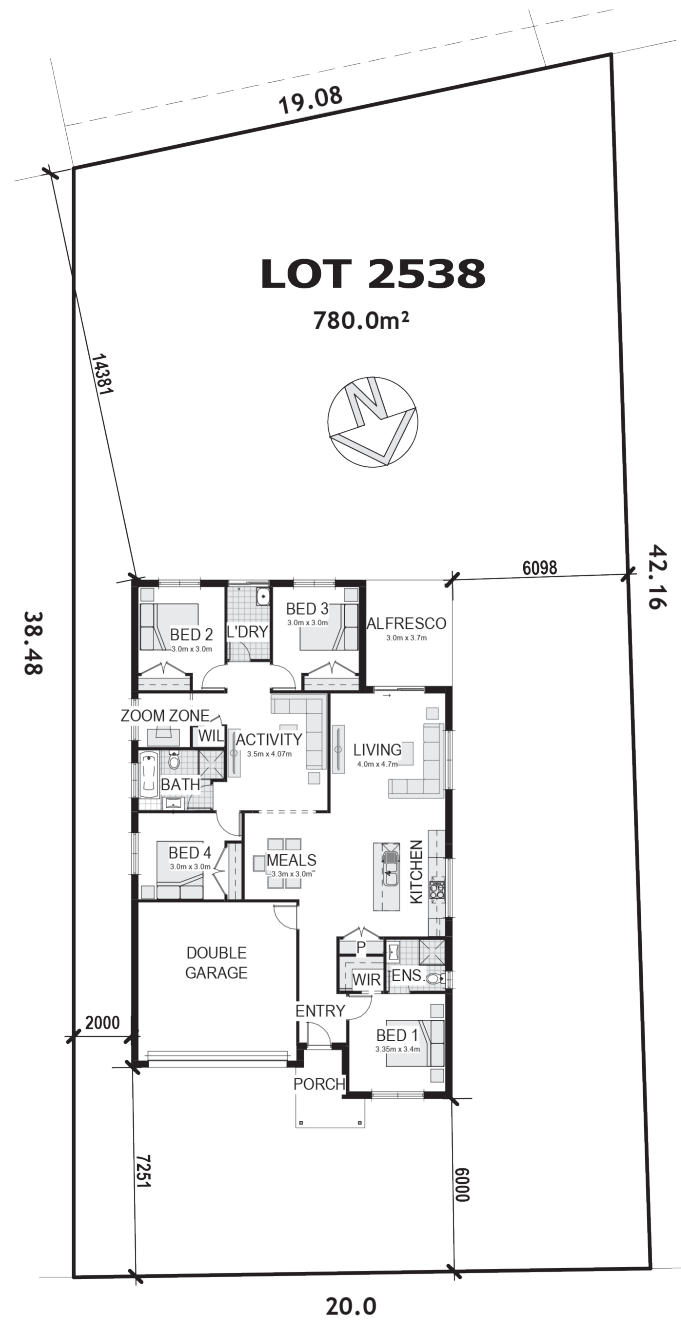
### Contact:

Steve Briant - 0450 828 981  
steve.briant@bellriverhomes.com.au

[bellriverhomes.com.au](http://bellriverhomes.com.au)



# PROPOSED SITING OF YOUR NEW BELLRIVER HOME



## NORD GROVE

### GREENFIELD CDC

**Note:** This is a preliminary siting and is subject to a clear copy of title and approval of the builder.

This siting is subject to developer approval, rescode (state building regulations) and council requirements (if required).

### Land siting acceptance:

Sign 1:

Sign 2:

Date:

[bellriverhomes.com.au](https://bellriverhomes.com.au)



\*Includes garage, alfresco & porch where included. \*Images are for illustrative purposes only and may include options not included in price. Please talk to a Bellriver consultant for a full list of inclusions. Package price is based on April 2021 pricelist. Bellriver Homes reserves the right to change specifications & prices without notice.