

HOUSE & LAND PACKAGES

\$1000 DEPOSIT
Secure your package today



PALM COVE 306 with Montpelier façade

\$779,900

4 2 2

**Lot 37, Tahnee Street
Blue Waters Estate
Sanctuary Point, NSW 2540**

**House size[†] 305.3m²
House price \$400,900**

**Land size 608.1m²
Land price \$379,000**

Packages features:

- Coloured concrete driveway & path
- Ducted air-conditioning
- 20mm stone benchtops to kitchen
- Automatic garage door
- Laminate flooring to kitchen/living
- Quality carpet to balance
- Taubmans 3-coat paint system
- Westinghouse S/S appliances
- Westinghouse S/S 900mm rangehood
- R3.5 ceiling & R2.0 wall insulation
- Two sensor alarm system
- Site costs & service connections
- Colorbond® roof with Anticon® blanket or tiled roof with sarking
- NBN fibre-optic cable to garage hub
- Site costs & service connections
- BASIX package
- Façade materials to meet guidelines
- Plain concrete to porch & alfresco

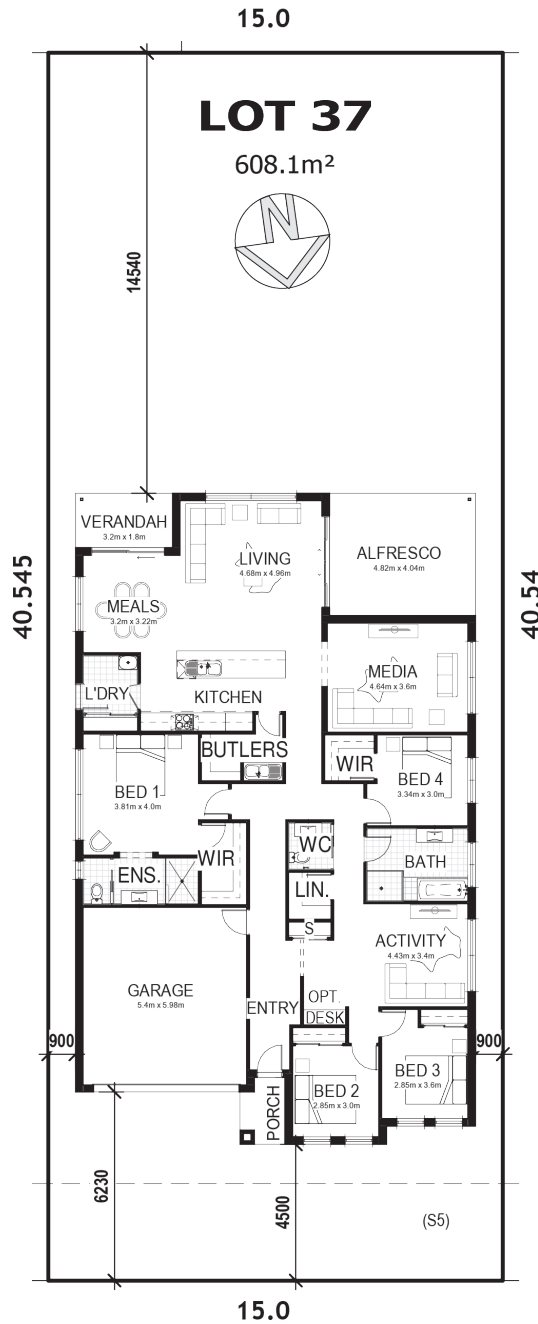


bellriverhomes.com.au



*Includes garage, alfresco & porch where included. *Images are for illustrative purposes only and may include options not included in price. Please talk to a Bellriver consultant for a full list of inclusions. Package price is based on April 2021 pricelist. Bellriver Homes reserves the right to change specifications & prices without notice.

PROPOSED SITING OF YOUR NEW BELLRIVER HOME



TAHNEE STREET

GREENFIELD CDC

Note: This is a preliminary siting and is subject to a clear copy of title and approval of the builder.
 This siting is subject to developer approval, rescold (state building regulations) and council requirements (if required).

Land siting acceptance:

Sign 1:	Sign 2:	Date:
---------	---------	-------

bellriverhomes.com.au



*Includes garage, alfresco & porch where included. *Images are for illustrative purposes only and may include options not included in price. Please talk to a Bellriver consultant for a full list of inclusions. Package price is based on April 2021 pricelist. Bellriver Homes reserves the right to change specifications & prices without notice.