

# HOUSE & LAND PACKAGES

**\$1000 DEPOSIT**  
Secure your package today



## BAYSWATER 22 Mk2 with Lennox façade

4 2 2

# \$588,755

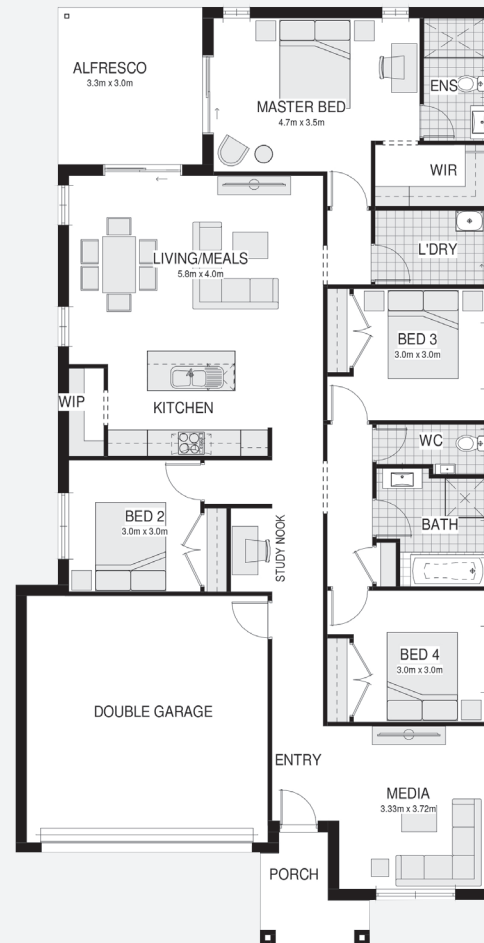
**Lot 2614, Peachy Avenue  
North Rothbury  
Huntlee, NSW 2335**

**House size<sup>†</sup> 204.1m<sup>2</sup>  
House price \$353,755**

**Land size 620.3m<sup>2</sup>  
Land price \$235,000**

### Packages features:

- Coloured concrete driveway & path
- Ducted air-conditioning
- 20mm stone benchtops to kitchen
- Automatic garage door
- Laminate flooring to kitchen/living
- Quality carpet to balance
- Taubmans 3-coat paint system
- Westinghouse S/S appliances
- Westinghouse S/S 900mm rangehood
- R3.5 ceiling & R2.0 wall insulation
- Two sensor alarm system
- Site costs & service connections
- Colorbond® roof with Anticon® blanket or tiled roof with sarking
- NBN fibre-optic cable to garage hub
- Site costs & service connections
- BASIX package
- Façade materials to meet guidelines
- Plain concrete to porch & alfresco
- Price protection until land registration
- Dropped-edge beam - containing fill



### Contact:

Steve Briant - 0450 828 981  
steve.briant@bellriverhomes.com.au

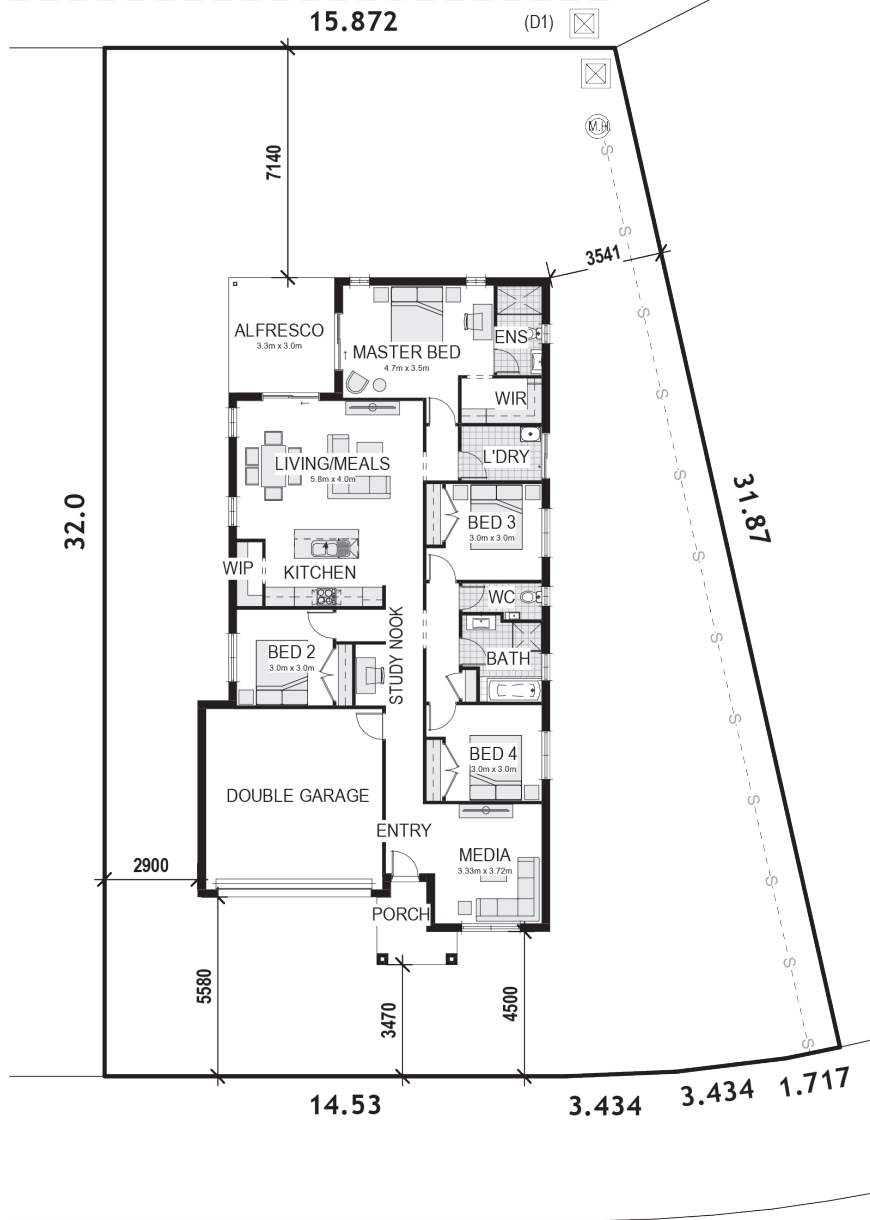
[bellriverhomes.com.au](http://bellriverhomes.com.au)



# PROPOSED SITING OF YOUR NEW BELLRIVER HOME

## LOT 2614

620.3m<sup>2</sup>



## PEACHY AVENUE

### GREENFIELD CDC

**Note:** This is a preliminary siting and is subject to a clear copy of title and approval of the builder.

This siting is subject to developer approval, rescod (state building regulations) and council requirements (if required).

### Land siting acceptance:

Sign 1:

Sign 2:

Date:

[bellriverhomes.com.au](http://bellriverhomes.com.au)

