

# HOUSE & LAND PACKAGES

**\$1000 DEPOSIT**  
Secure your package today



## BAYSWATER 19 CORNER with Portino façade

**\$599,000**

4 2 2

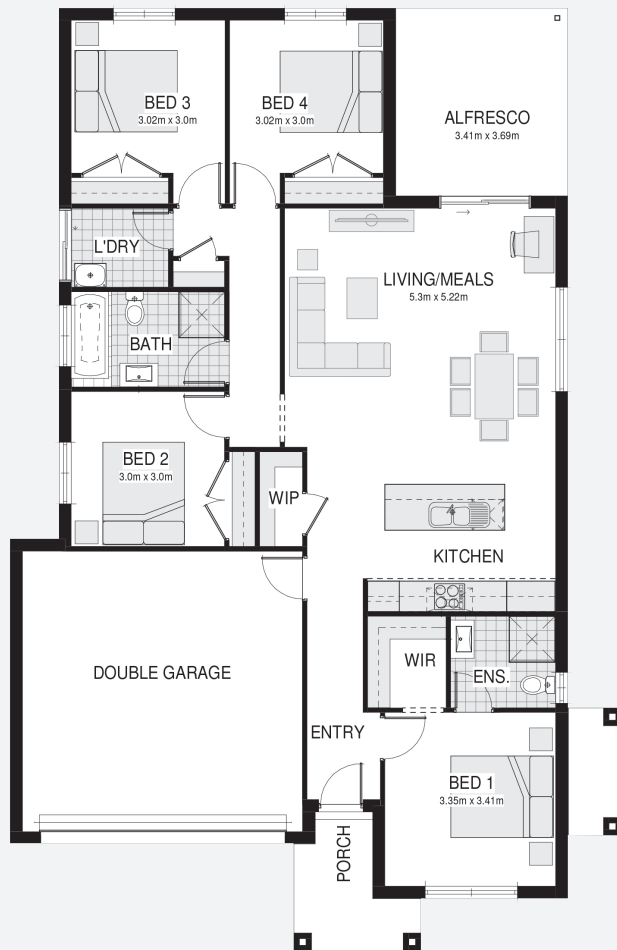
**Lot 2616, Proposed Road  
North Rothbury  
Huntlee, NSW 2335**

**House size<sup>1</sup> 175.2m<sup>2</sup>  
House price \$339,000**

**Land size 702.0m<sup>2</sup>  
Land price \$260,000**

### Packages features:

- Coloured concrete driveway & path
- Ducted air-conditioning
- 20mm stone benchtops to kitchen
- Automatic garage door
- Laminate flooring to kitchen/living
- Quality carpet to balance
- Taubmans 3-coat paint system
- Westinghouse S/S appliances
- Westinghouse S/S 900mm rangehood
- R3.5 ceiling & R2.0 wall insulation
- Two sensor alarm system
- Site costs & service connections
- Colorbond® roof with Anticon® blanket or tiled roof with sarking
- NBN fibre-optic cable to garage hub
- Site costs & service connections
- BASIX package
- Façade materials to meet guidelines
- Plain concrete to porch & alfresco
- Price protection until land registration
- Dropped-edge beam - containing fill
- Bush fire report & requirements



### Contact:

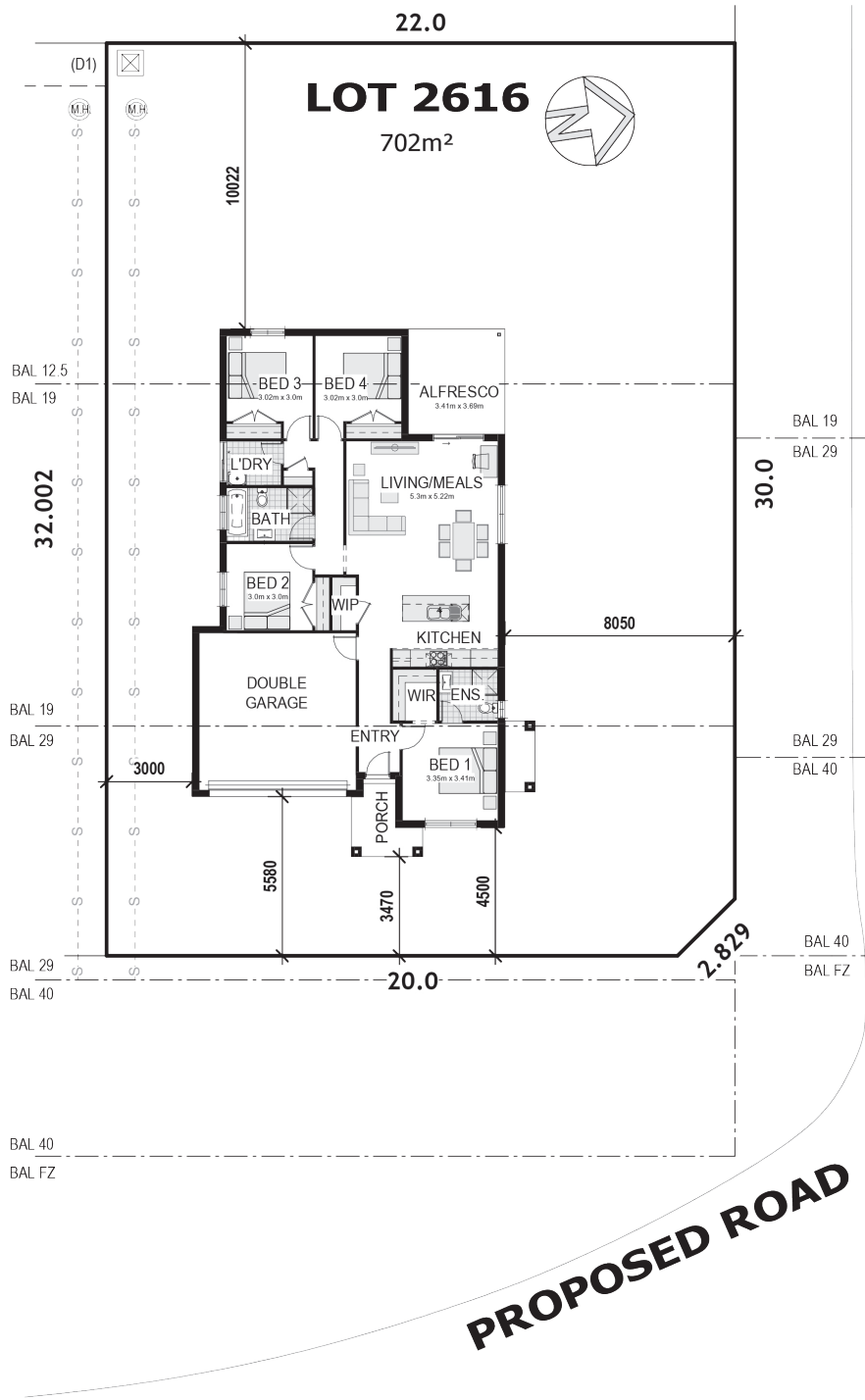
Steve Briant - 0450 828 981  
steve.briant@bellriverhomes.com.au

[bellriverhomes.com.au](http://bellriverhomes.com.au)



<sup>1</sup>Includes garage, alfresco & porch where included. \*Images are for illustrative purposes only and may include options not included in price. Please talk to a Bellriver consultant for a full list of inclusions. Package price is based on April 2021 pricelist. Bellriver Homes reserves the right to change specifications & prices without notice.

# PROPOSED SITING OF YOUR NEW BELLRIVER HOME



## GREENFIELD CDC

**Note:** This is a preliminary siting and is subject to a clear copy of title and approval of the builder.

This siting is subject to developer approval, rescode (state building regulations) and council requirements (if required).

## Land siting acceptance:

Sign 1:	Sign 2:	Date:
---------	---------	-------