

HOUSE & LAND PACKAGES

\$1000 DEPOSIT
Secure your package today



SEAFORTH 369 with Catalina façade

4 2 2

\$1,177,900

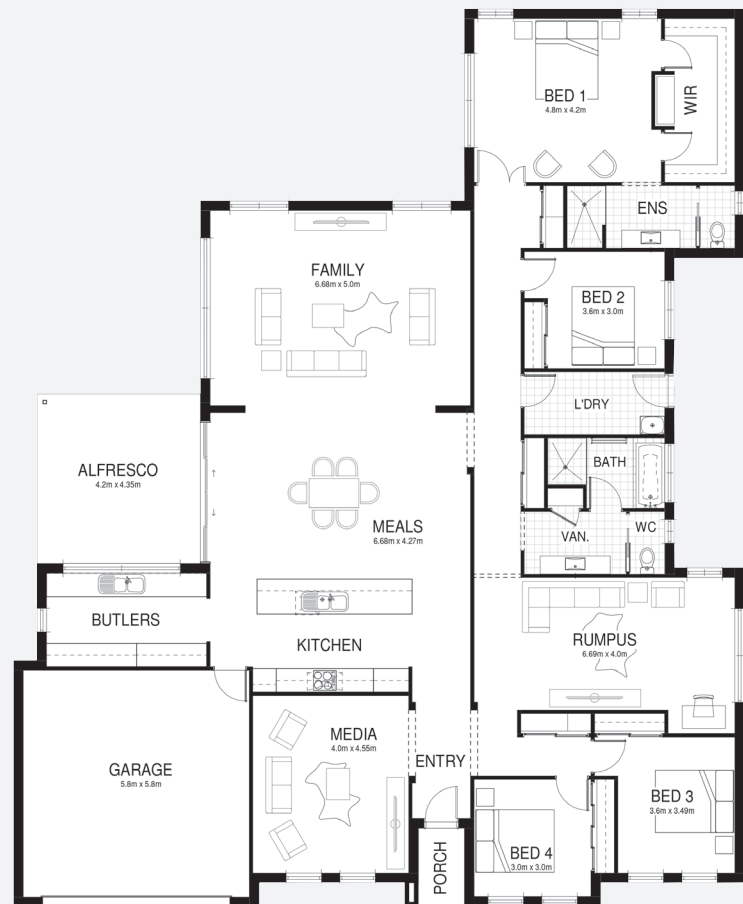
**Lot 222, Treesbank Place
Treesbank Fields Estate
Nulkaba, NSW 2325**

**House size[†] 368.7m²
House price \$498,900**

**Land size 2000.0m²
Land price \$679,000**

Packages features:

- Coloured concrete driveway & path
- Ducted air-conditioning
- 20mm stone benchtops to kitchen
- Automatic garage door
- Laminate flooring to kitchen/living
- Quality carpet to balance
- Taubmans 3-coat paint system
- Westinghouse S/S appliances
- Westinghouse S/S 900mm rangehood
- R3.5 ceiling & R2.0 wall insulation
- Two sensor alarm system
- Oyster lights throughout
- Free-standing bath
- NBN fibre-optic cable to garage hub
- Site costs & service connections
- Plain concrete to porch & alfresco
- Package price protection until forecast land registration date

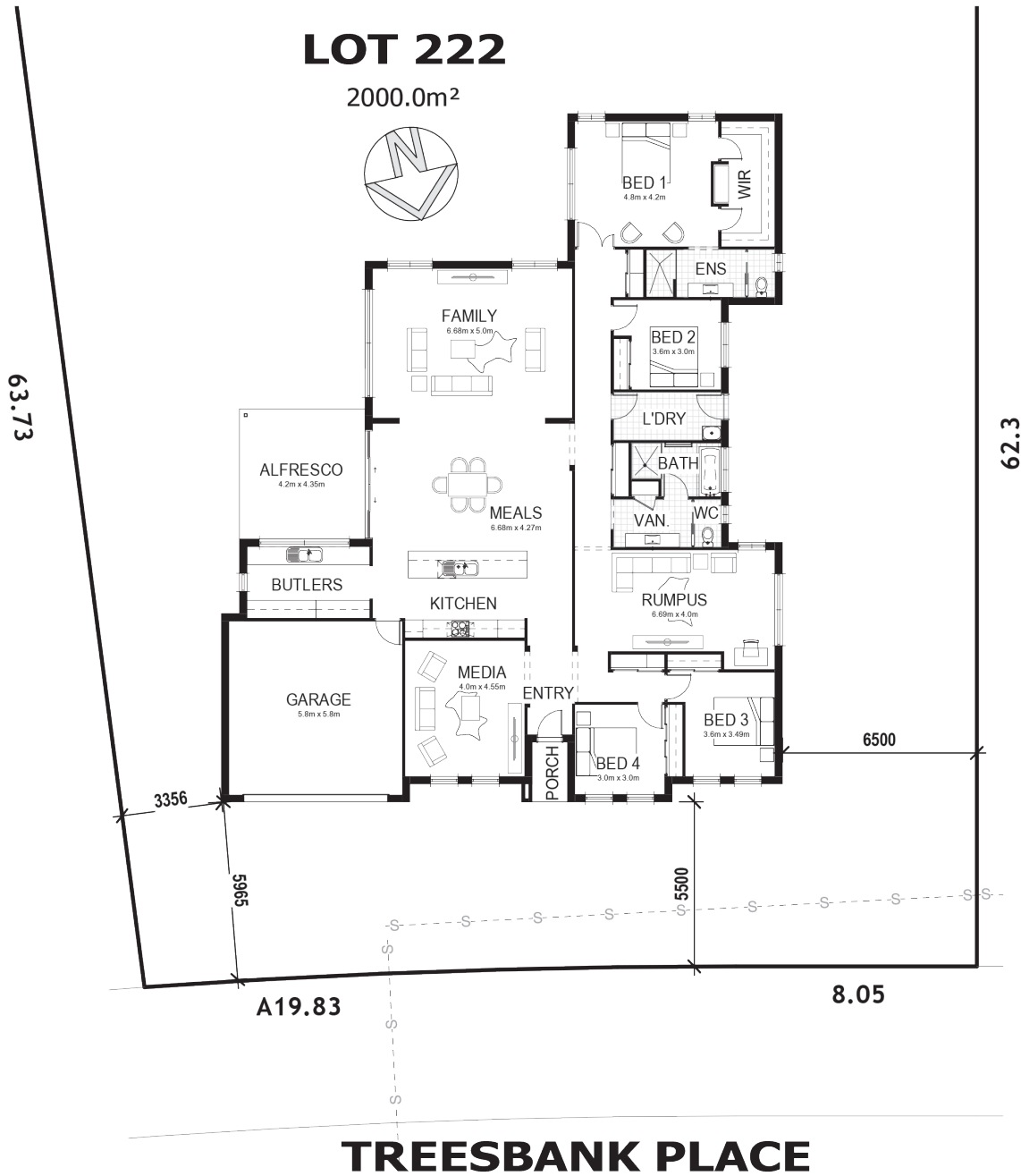


bellriverhomes.com.au



*Includes garage, alfresco & porch where included. *Images are for illustrative purposes only and may include options not included in price. Please talk to a Bellriver consultant for a full list of inclusions. Package price is based on December 2021 pricelist. Bellriver Homes reserves the right to change specifications & prices without notice.

PROPOSED SITING OF YOUR NEW BELLRIVER HOME



GREENFIELD CDC

Note: This is a preliminary siting and is subject to a clear copy of title and approval of the builder.

This siting is subject to developer approval, rescod (state building regulations) and council requirements (if required).

Land siting acceptance:

Sign 1:

Sign 2:

Date:

bellriverhomes.com.au

