

# HOUSE & LAND PACKAGES

**\$1000 DEPOSIT**  
Secure your package today



## AVALON 23 Mk1 with Seymour façade

**\$1,156,900**

4 2 2

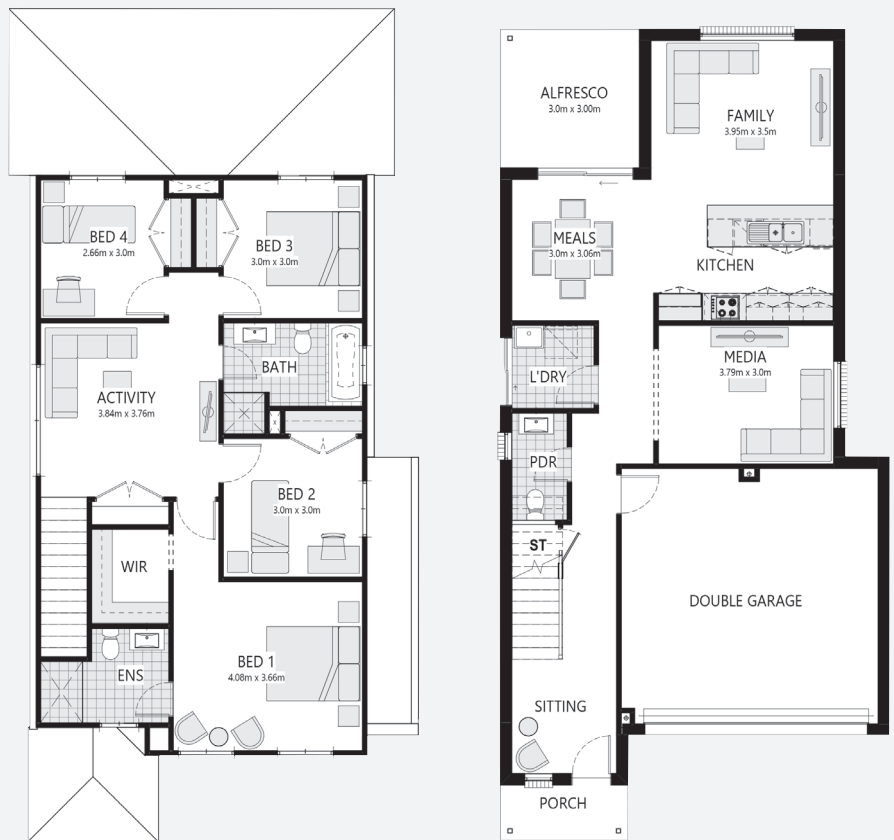
**Lot 10, Road 2  
Menin Road Estate  
Oakville, NSW 2765**

**House size<sup>†</sup> 213.0m<sup>2</sup>  
House price \$431,900**

**Land size 300.0m<sup>2</sup>  
Land price \$725,000**

### Packages features:

- Coloured concrete driveway & path
- Ducted air-conditioning
- 20mm stone benchtops to kitchen
- Automatic garage door
- Laminate flooring to kitchen/living
- Quality carpet to balance
- Taubmans 3-coat paint system
- Westinghouse S/S appliances
- Westinghouse S/S 900mm rangehood
- R3.5 ceiling & R2.0 wall insulation
- Two sensor alarm system
- Free-standing bath
- Oyster lights throughout
- Tiled roof with sarking
- NBN fibre-optic cable to garage hub
- Site costs & service connections
- Plain concrete to porch & alfresco
- Package price protection until forecast land registration date
- External steps
- Grate drain



[bellriverhomes.com.au](http://bellriverhomes.com.au)

**BELL RIVER**

<sup>†</sup>Includes garage, alfresco & porch where included. \*Images are for illustrative purposes only and may include options not included in price. Please talk to a Bellriver consultant for a full list of inclusions. Package price is based on December 2021 pricelist. Bellriver Homes reserves the right to change specifications & prices without notice.

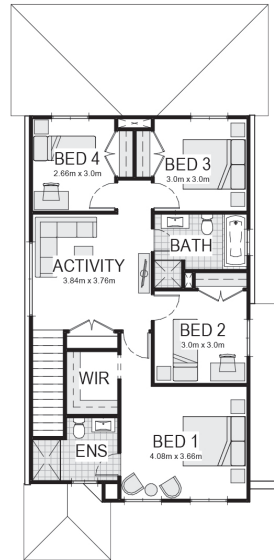
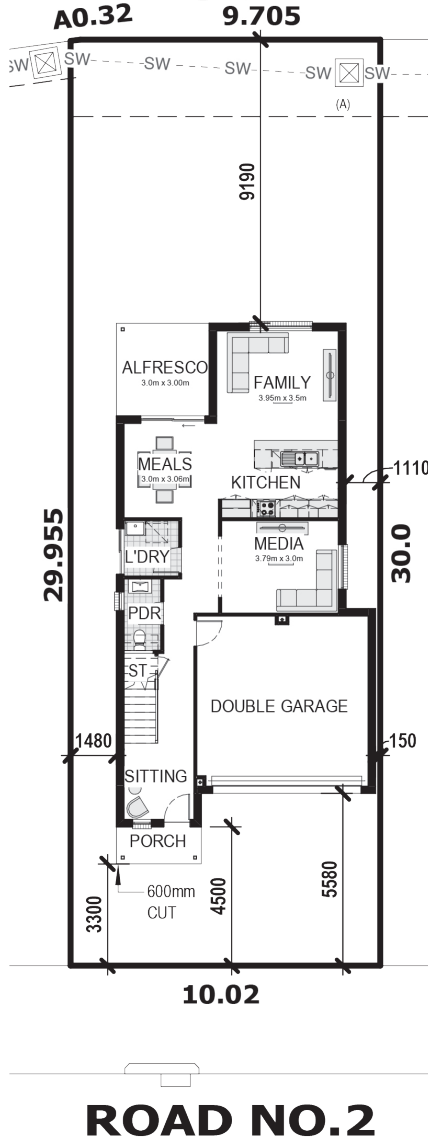
# PROPOSED SITING OF YOUR NEW BELLRIVER HOME

## LOT 10

300.6m<sup>2</sup>



## BOUNDARY ROAD



### SIMPLIFIED CDC

**Note:** This is a preliminary siting and is subject to a clear copy of title and approval of the builder.

This siting is subject to developer approval, rescod (state building regulations) and council requirements (if required).

### Land siting acceptance:

Sign 1:

Sign 2:

Date:

[bellriverhomes.com.au](http://bellriverhomes.com.au)

