

# HOUSE & LAND PACKAGES

**\$1000 DEPOSIT**  
Secure your package today



## PARKVIEW 21 with Portino façade

4 2.5 2

**\$759,900**

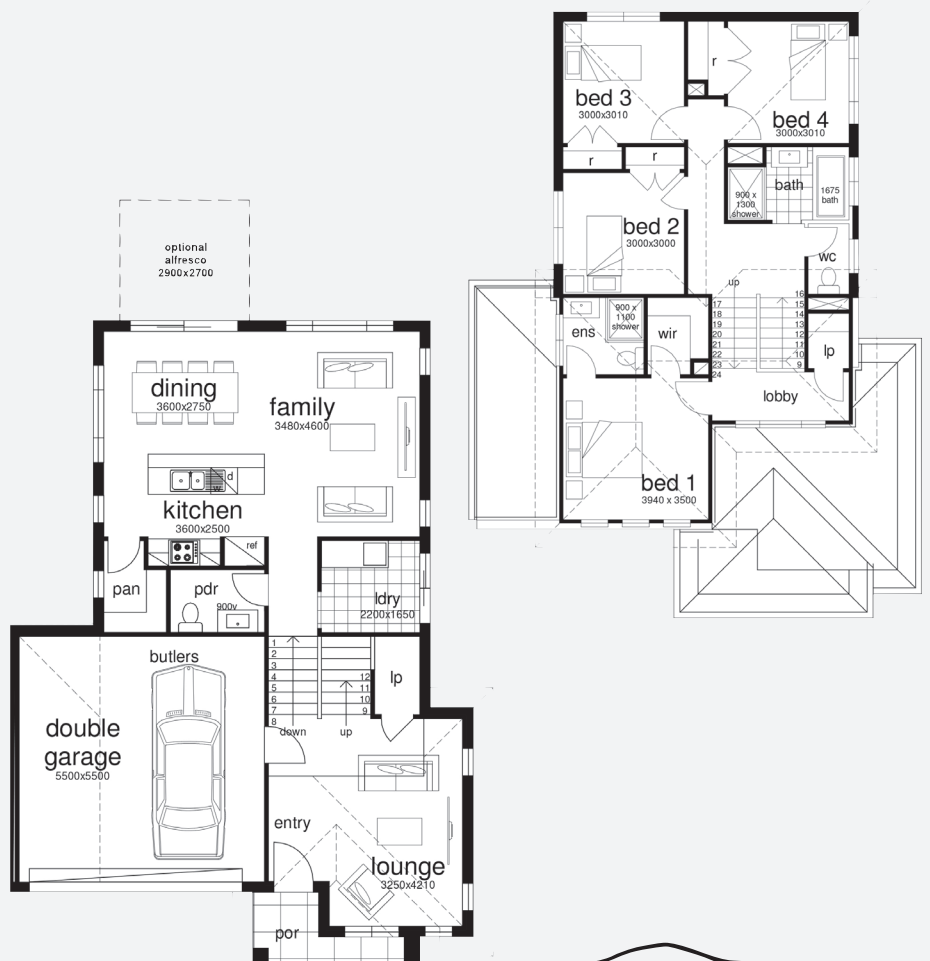
**Lot 419, Pillar Street  
North Ridge Estate  
Bellbird Heights, NSW 2325**

**House size<sup>†</sup> 204.6m<sup>2</sup>  
House price \$414,900**

**Land size 648.0m<sup>2</sup>  
Land price \$345,000**

### Packages features:

- Coloured concrete driveway & path
- Ducted air-conditioning
- 20mm stone benchtops to kitchen
- Automatic sectional garage door
- Laminate flooring to kitchen/living
- Quality carpet to balance
- Taubmans 3-coat paint system
- Westinghouse S/S appliances
- Westinghouse S/S 900mm rangehood
- R3.5 ceiling & R2.0 wall insulation
- Free-standing bath
- 16 downlights & oyster lights throughout
- Tiled roof with sarking
- NBN fibre-optic cable to garage hub
- Site costs & service connections
- Plain concrete to porch
- Package price protection until Jul'23
- Bushfire report & requirements
- Grate drain & house stepdown



**NORTH RIDGE**

[bellriverhomes.com.au](http://bellriverhomes.com.au)



\*Includes garage, alfresco & porch where included. \*Images are for illustrative purposes only and may include options not included in price. Please talk to a Bellriver consultant for a full list of inclusions. Package price is based on May 2022 pricelist. Bellriver Homes reserves the right to change specifications & prices without notice.

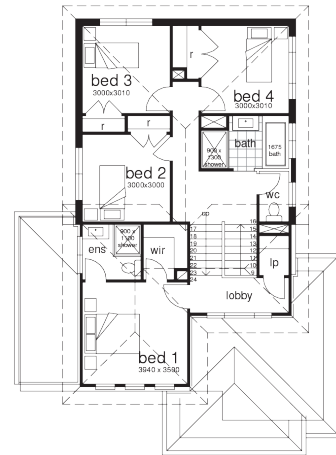
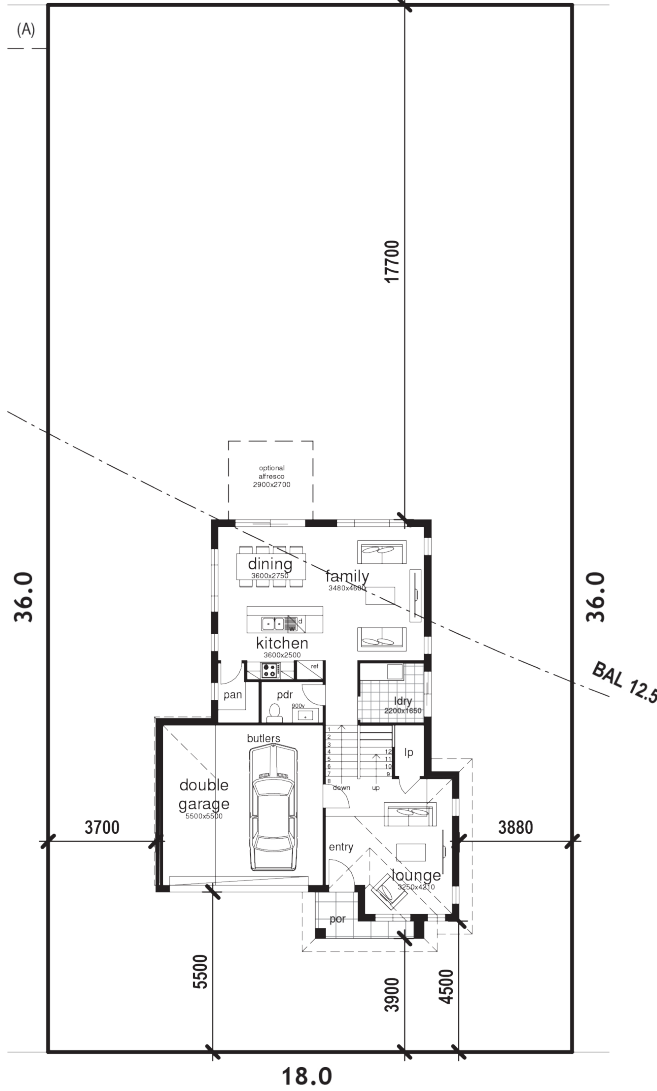
# PROPOSED SITING OF YOUR NEW BELLRIVER HOME

## LOT 419

648m<sup>2</sup>



18.0



## PILLAR STREET

### DEVELOPMENT APPLICATION CDC

**Note:** This is a preliminary siting and is subject to a clear copy of title and approval of the builder.

This siting is subject to developer approval, rescodé (state building regulations) and council requirements (if required).

### Land siting acceptance:

Sign 1:

Sign 2:

Date:

[bellriverhomes.com.au](http://bellriverhomes.com.au)

