

# HOUSE & LAND PACKAGES

**\$1000 DEPOSIT**  
Secure your package today



## AVALON 26 Mk2 with Longbeach façade

4 2.5 2

**\$1,126,900**

### Lot 225

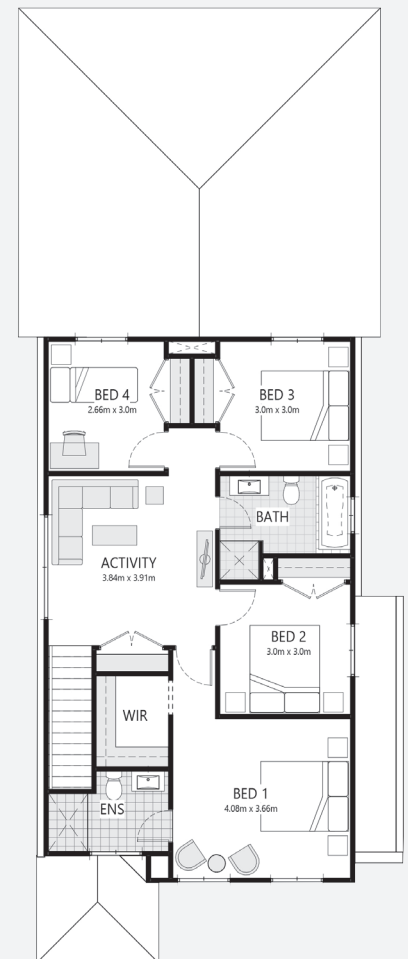
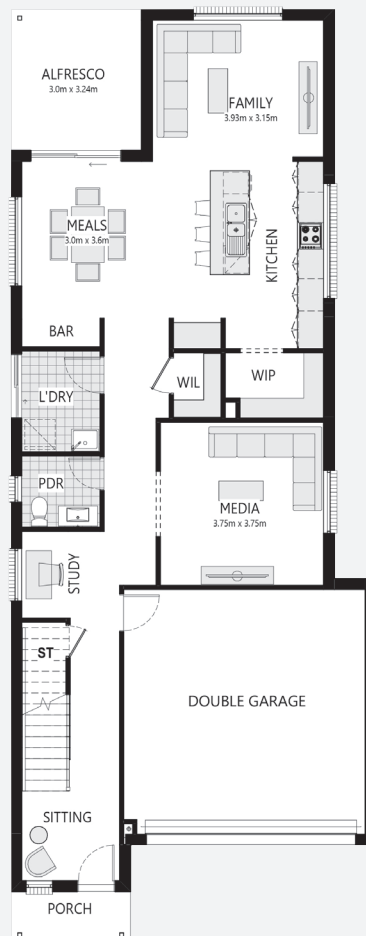
**Forest Reach Estate  
Huntley, NSW 2530**

**House size<sup>†</sup> 242.5m<sup>2</sup>  
House price \$600,900**

**Land size 485.4m<sup>2</sup>  
Land price \$526,000**

#### Packages features:

- Coloured concrete driveway & path
- Ducted air-conditioning
- 20mm stone benchtops to kitchen
- Automatic sectional garage door
- Laminate flooring to kitchen/living
- Quality carpet to balance
- Taubmans 3-coat paint system
- Westinghouse S/S appliances
- Westinghouse S/S 900mm rangehood
- R3.5 ceiling & R2.0 wall insulation
- Two sensor alarm system
- Free-standing bath
- Oyster lights throughout
- Tiled roof with sarking
- NBN fibre-optic cable to garage hub
- Site costs & service connections
- Plain concrete to porch & alfresco
- Package price protection until Jun'23
- Bushfire report & requirements

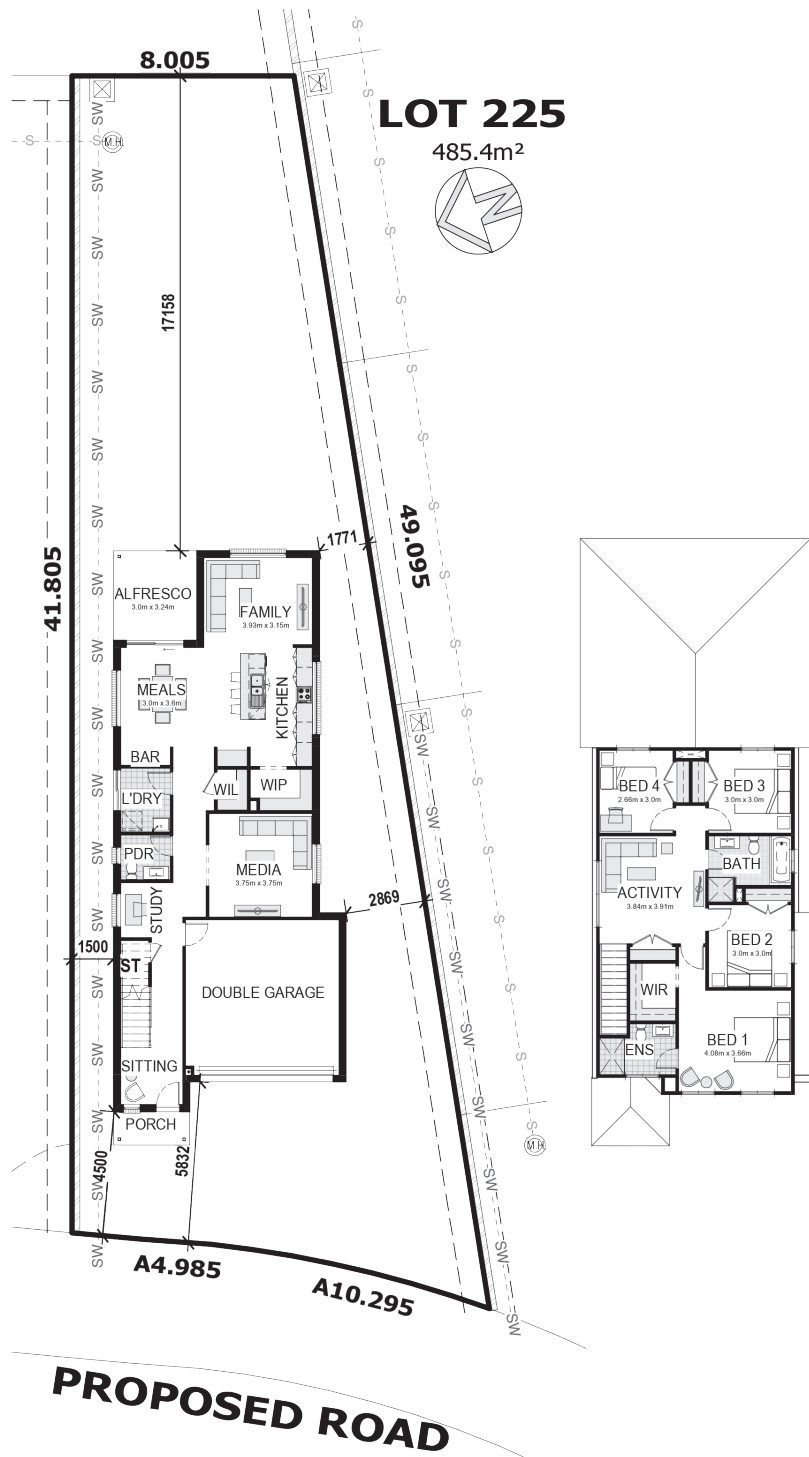


[bellriverhomes.com.au](http://bellriverhomes.com.au)

**BELL RIVER**

<sup>†</sup>Includes garage, alfresco & porch where included. \*Images are for illustrative purposes only and may include options not included in price. Please talk to a Bellriver consultant for a full list of inclusions. Package price is based on June 2022 pricelist. Bellriver Homes reserves the right to change specifications & prices without notice.

# PROPOSED SITING OF YOUR NEW BELLRIVER HOME



## SIMPLIFIED CDC

**Note:** This is a preliminary siting and is subject to a clear copy of title and approval of the builder.

This siting is subject to developer approval, rescod (state building regulations) and council requirements (if required).

## Land siting acceptance:

Sign 1:

Sign 2:

Date:

[bellriverhomes.com.au](http://bellriverhomes.com.au)

