

# HOUSE & LAND PACKAGES

**\$1000 DEPOSIT**  
Secure your package today



## AVALON 20 with Seymour façade

4 2.5 2

**\$1,249,900**

**Lot 2296, Bat Street  
Carmel View Estate  
Box Hill, NSW 2765**

**House size<sup>1</sup> 190.4m<sup>2</sup>  
House price \$334,900**

**Land size 300.0m<sup>2</sup>  
Land price \$915,000**

### Packages features:

- Coloured concrete driveway & path
- Ducted air-conditioning
- 20mm stone benchtops to kitchen
- Automatic sectional garage door
- Laminate flooring to kitchen/living
- Quality carpet to balance
- Taubmans 3-coat paint system
- Westinghouse S/S appliances
- Westinghouse S/S 900mm rangehood
- R3.5 ceiling & R2.0 wall insulation
- Free-standing bath
- Oyster lights throughout
- NBN fibre-optic cable to garage hub
- Site costs & service connections
- Tiled roof with sarking
- Plain concrete to porch
- Package price protection until June'22
- External steps



[bellriverhomes.com.au](http://bellriverhomes.com.au)

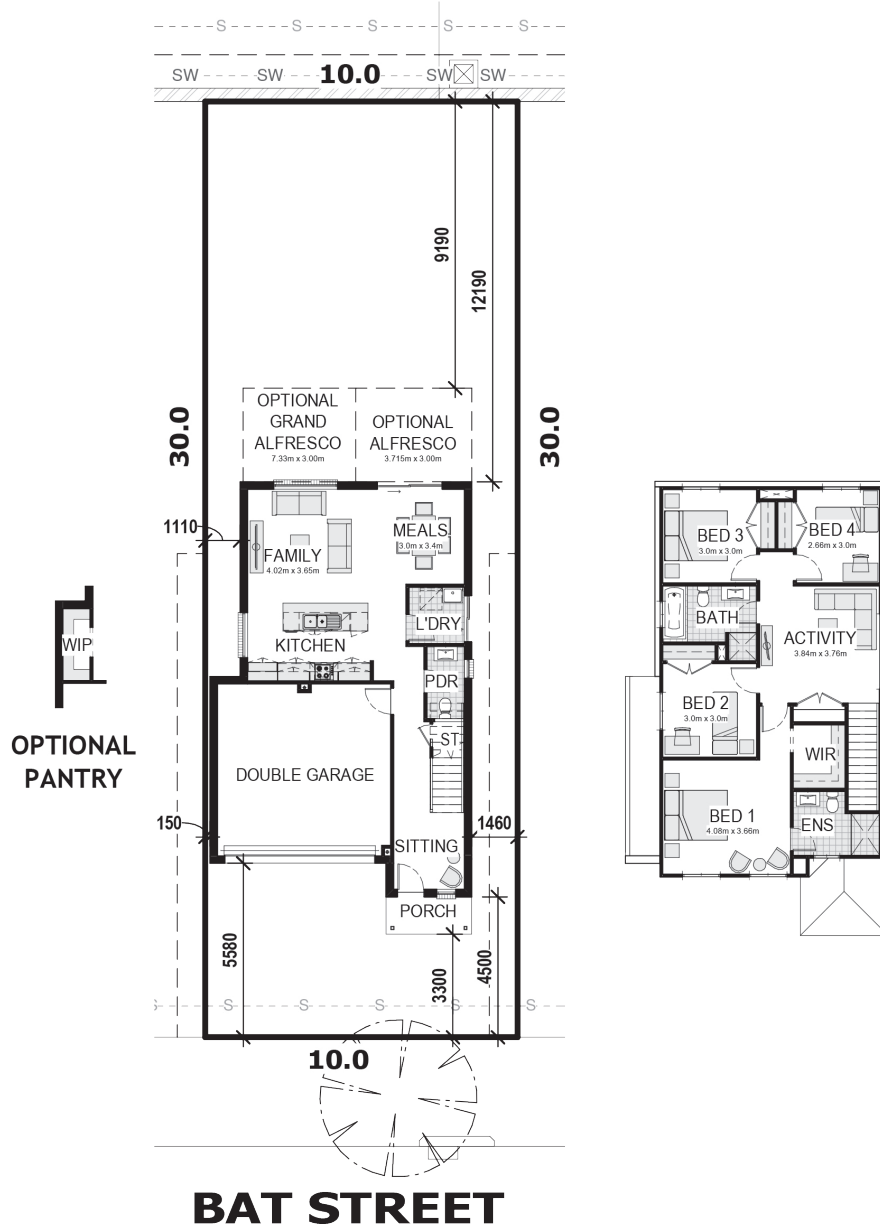


<sup>1</sup>Includes garage, alfresco & porch where included. \*Images are for illustrative purposes only and may include options not included in price. Please talk to a Bellriver consultant for a full list of inclusions. Package price is based on May 2022 pricelist. Bellriver Homes reserves the right to change specifications & prices without notice.

# PROPOSED SITING OF YOUR NEW BELLRIVER HOME

## LOT 2296

300m<sup>2</sup>



### GREENFIELD CDC

**Note:** This is a preliminary siting and is subject to a clear copy of title and approval of the builder.

This siting is subject to developer approval, rescold (state building regulations) and council requirements (if required).

### Land siting acceptance:

Sign 1:	Sign 2:	Date:
---------	---------	-------

[bellriverhomes.com.au](http://bellriverhomes.com.au)

