

# HOUSE & LAND PACKAGES

**\$1000 DEPOSIT**  
Secure your package today



ANTICIPATED LAND REGISTRATION  
**NOV '22**

## GLENMORE 22 Mk1 with Enlight façade

**\$988,000**

4 2.5 1

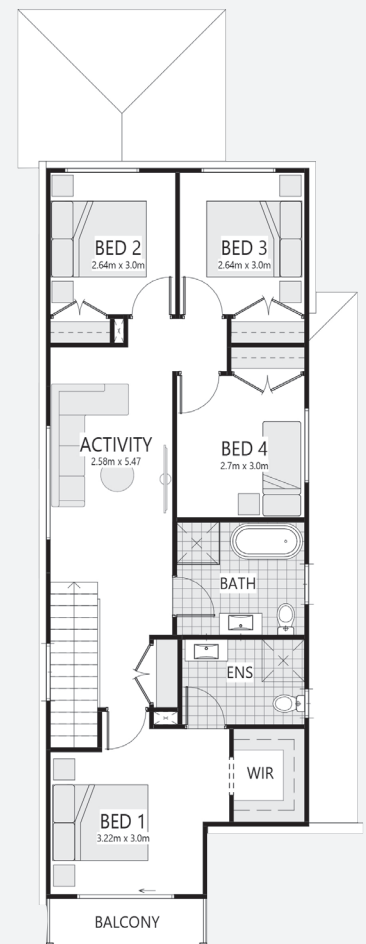
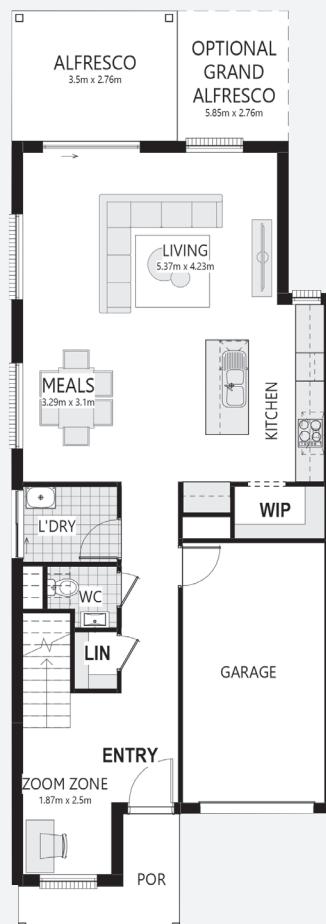
**Lot 68 Road No.2**  
**Settler's Village Estate**  
**Werrington, NSW 2747**

**House size<sup>†</sup> 198.6m<sup>2</sup>**  
**House price \$448,000**

**Land size 223.0m<sup>2</sup>**  
**Land price \$540,000**

### Packages features:

- Coloured concrete driveway & path
- Ducted air-conditioning
- 20mm stone benchtops to kitchen
- Automatic garage door
- Laminate flooring to kitchen/living
- Quality carpet to balance
- Taubmans 3-coat paint system
- Westinghouse S/S appliances
- Westinghouse S/S 900mm rangehood
- R3.5 ceiling & R2.0 wall insulation
- Free-standing bath
- Oyster lights throughout
- NBN fibre-optic cable to garage hub
- Site costs & service connections
- Tiled roof with sarking
- Plain concrete to porch & alfresco
- Package price protection until Nov'22



[bellriverhomes.com.au](http://bellriverhomes.com.au)

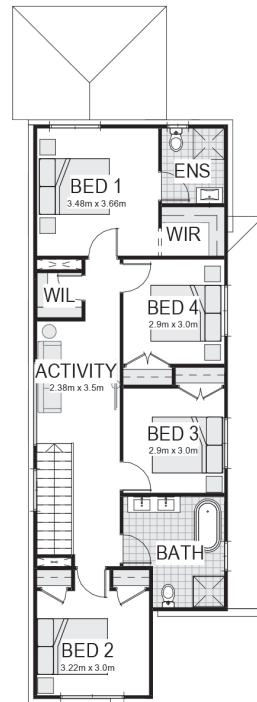
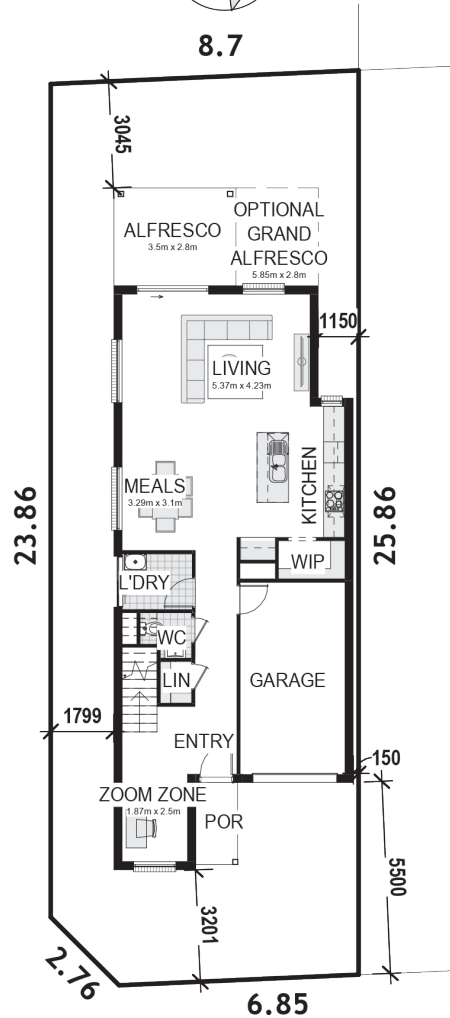


<sup>†</sup>Includes garage, alfresco & porch where included. \*Images are for illustrative purposes only and may include options not included in price. Please talk to a Bellriver consultant for a full list of inclusions. Package price is based on May 2022 pricelist. Bellriver Homes reserves the right to change specifications & prices without notice.

# PROPOSED SITING OF YOUR NEW BELLRIVER HOME

## LOT 68

223.03m<sup>2</sup>



## NORTH SOUTH ROAD NO. 2

### SIMPLIFIED CDC

**Note:** This is a preliminary siting and is subject to a clear copy of title and approval of the builder.

This siting is subject to developer approval, rescode (state building regulations) and council requirements (if required).

### Land siting acceptance:

Sign 1:

Sign 2:

Date:

[bellriverhomes.com.au](http://bellriverhomes.com.au)

