

# HOUSE & LAND PACKAGES

**\$1000 DEPOSIT**  
Secure your package today



## BAYSWATER 20 with Argenta façade

4 2 2

**\$1,006,900**

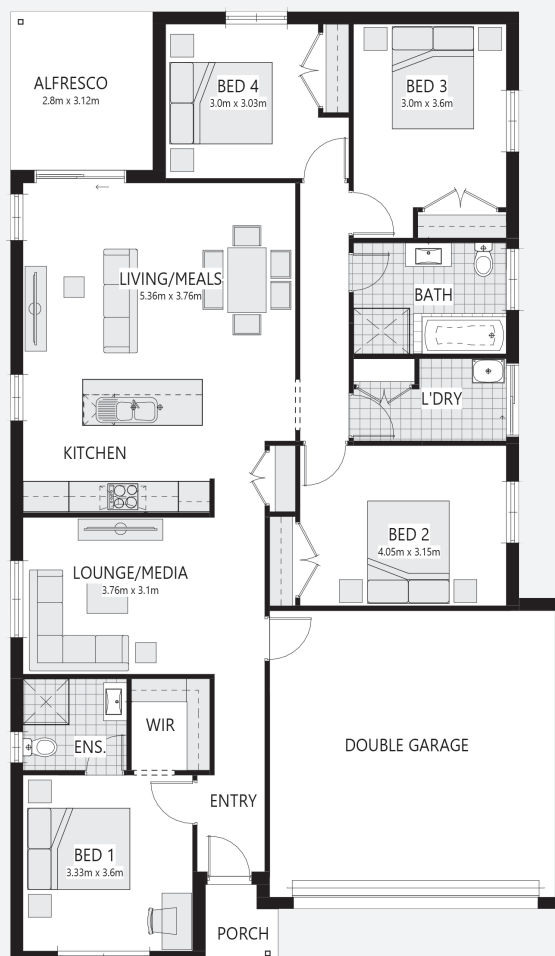
**Lot 118, Caravel Street  
Borg Estate  
Hamlyn Terrace, NSW 2259**

**House size<sup>†</sup> 187.6m<sup>2</sup>  
House price \$386,900**

**Land size 472.5m<sup>2</sup>  
Land price \$620,000**

### Packages features:

- Roller garage door
- Laminate flooring to kitchen/living
- Quality carpet to balance
- Taubmans 3-coat paint system
- Westinghouse S/S appliances
- Westinghouse S/S 900mm rangehood
- R3.5 ceiling & R2.0 wall insulation
- Free-standing bath
- Oyster lights throughout
- Tiled roof with sarking
- NBN fibre-optic cable to garage hub
- Site costs & service connections
- Plain concrete to porch & alfresco
- Acoustic report & requirements
- Package price protection until Dec'22
- Grate drain



[bellriverhomes.com.au](http://bellriverhomes.com.au)

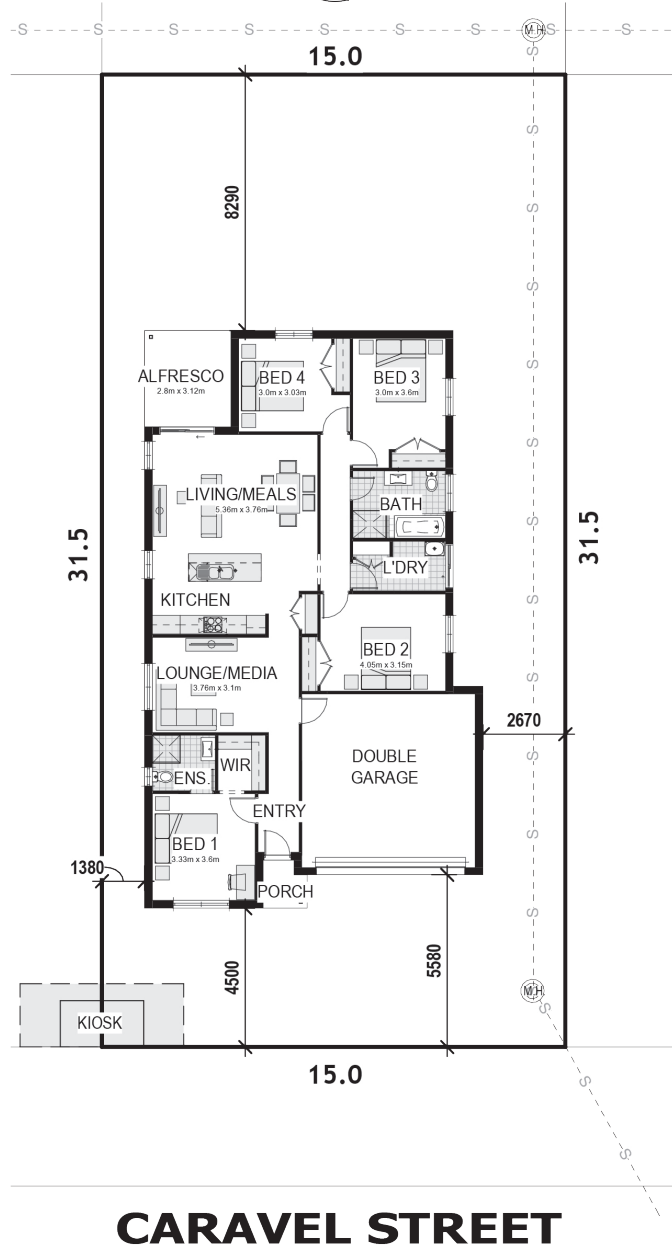


\*Includes garage, alfresco & porch where included. \*Images are for illustrative purposes only and may include options not included in price. Please talk to a Bellriver consultant for a full list of inclusions. Package price is based on June 2022 pricelist. Bellriver Homes reserves the right to change specifications & prices without notice.

# PROPOSED SITING OF YOUR NEW BELLRIVER HOME

## LOT 118

472.5m<sup>2</sup>



## CARAVEL STREET

### GREENFIELD CDC

**Note:** This is a preliminary siting and is subject to a clear copy of title and approval of the builder.

This siting is subject to developer approval, rescode (state building regulations) and council requirements (if required).

### Land siting acceptance:

Sign 1:

Sign 2:

Date:

[bellriverhomes.com.au](http://bellriverhomes.com.au)

